



# NEW IN-PATIENT TREATMENT CENTER

DEPARTMENT OF CORRECTIONS | JOLIET, IL | MAY 22ND, 2018

---



## PUBLIC MEETING

\$150M is turnkey and needs to include everything including contingency

\$110M for 200 beds is approximate construction budget.

Soft Costs: Medical equip/ movable equipment / commissioning (CDB is contracting)

Kitchen will serve entire facility

New Administration and Gatehouse



State-of-the-art facility

Hospital with security overlay

High quality care with expansion capability

Sustainable, energy-efficient, and environmentally friendly including Energy Star Rating

Improve operational efficiencies and lower maintenance costs

Destination for others from around the country and the world

Transitional Approach

Flexible in Use



SITE PLAN

MCDONOUGH ST

Preliminary – Not for Construction



# ADMIN BUILDING

## LEVEL 1

Preliminary – Not for Construction

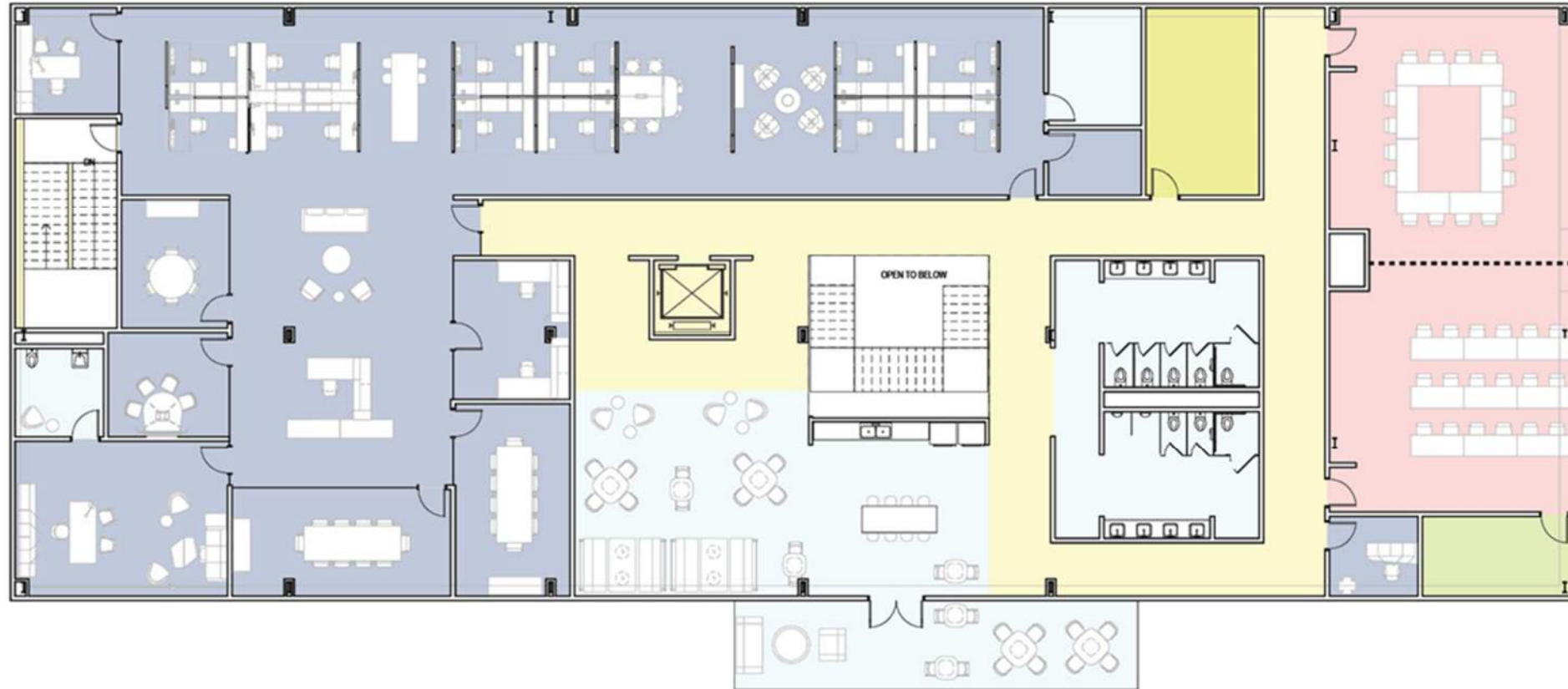




# ADMIN BUILDING

## LEVEL 2

Preliminary – Not for Construction



# ADMIN BUILDING

Preliminary – Not for Construction



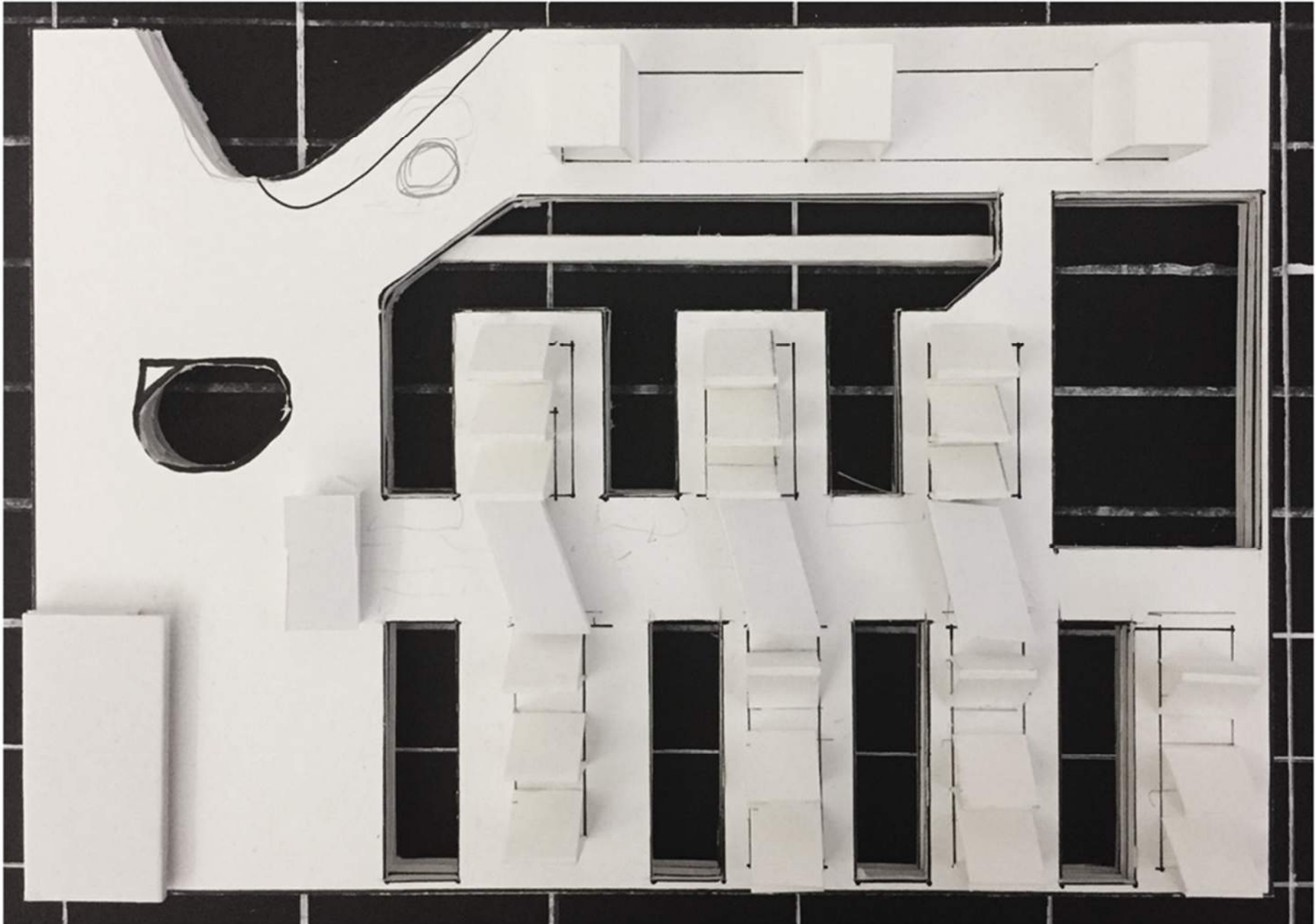
JOLIET, IL | MAY 22, 2018



# OVERALL MASSING

PHYSICAL MODEL

Preliminary – Not for Construction



JOLIET, IL | MAY 22, 2018



# INPATIENT TREATMENT CENTER

## OVERALL PLAN

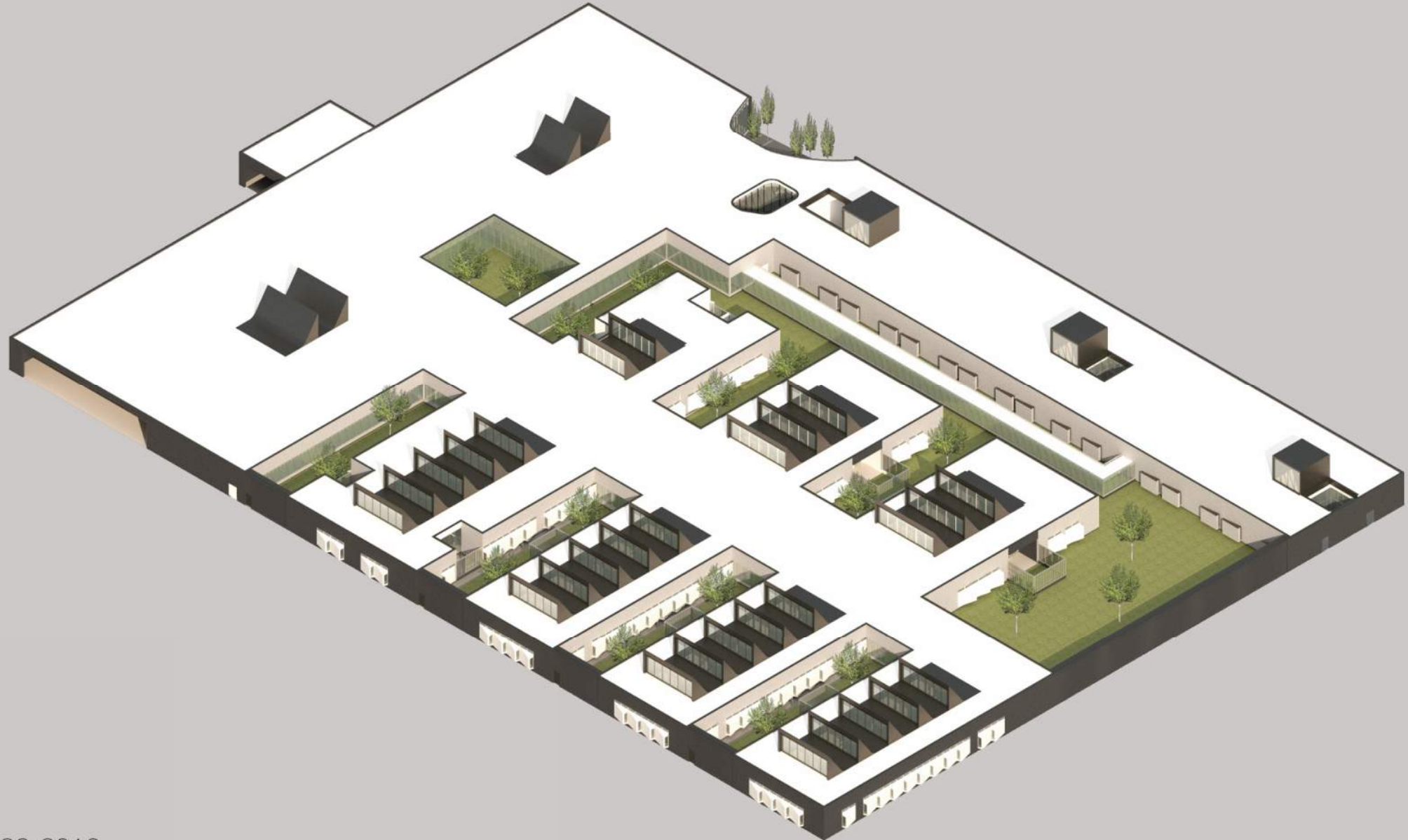
Preliminary – Not for Construction



# INPATIENT TREATMENT CENTER

EXTERIOR AERIAL

Preliminary – Not for Construction



JOLIET, IL | MAY 22, 2018



# INPATIENT TREATMENT CENTER

ENTRY

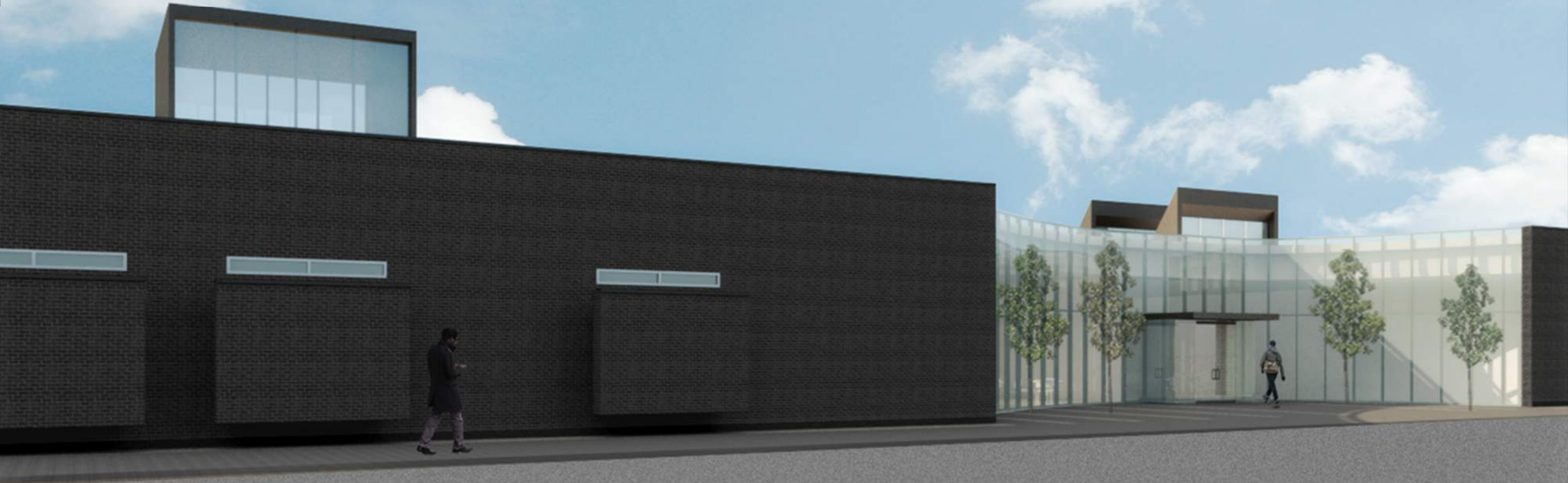
Preliminary – Not for Construction



# INPATIENT TREATMENT CENTER

ENTRANCE RENDERING

Preliminary – Not for Construction



JOLIET, IL | MAY 22, 2018

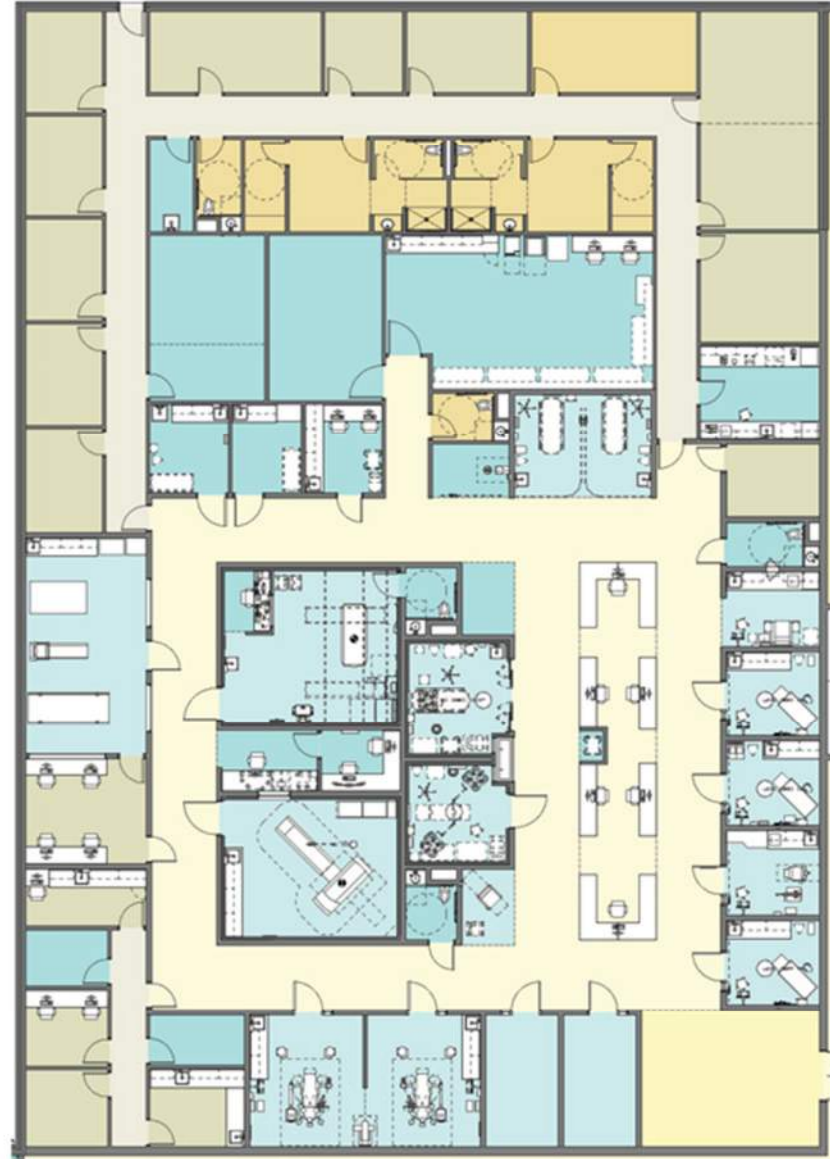




# INPATIENT TREATMENT CENTER

## CLINIC

Preliminary – Not for Construction



# INFIRMARY

Preliminary – Not for Construction



# INFIRMARY

TYPICAL UNIT

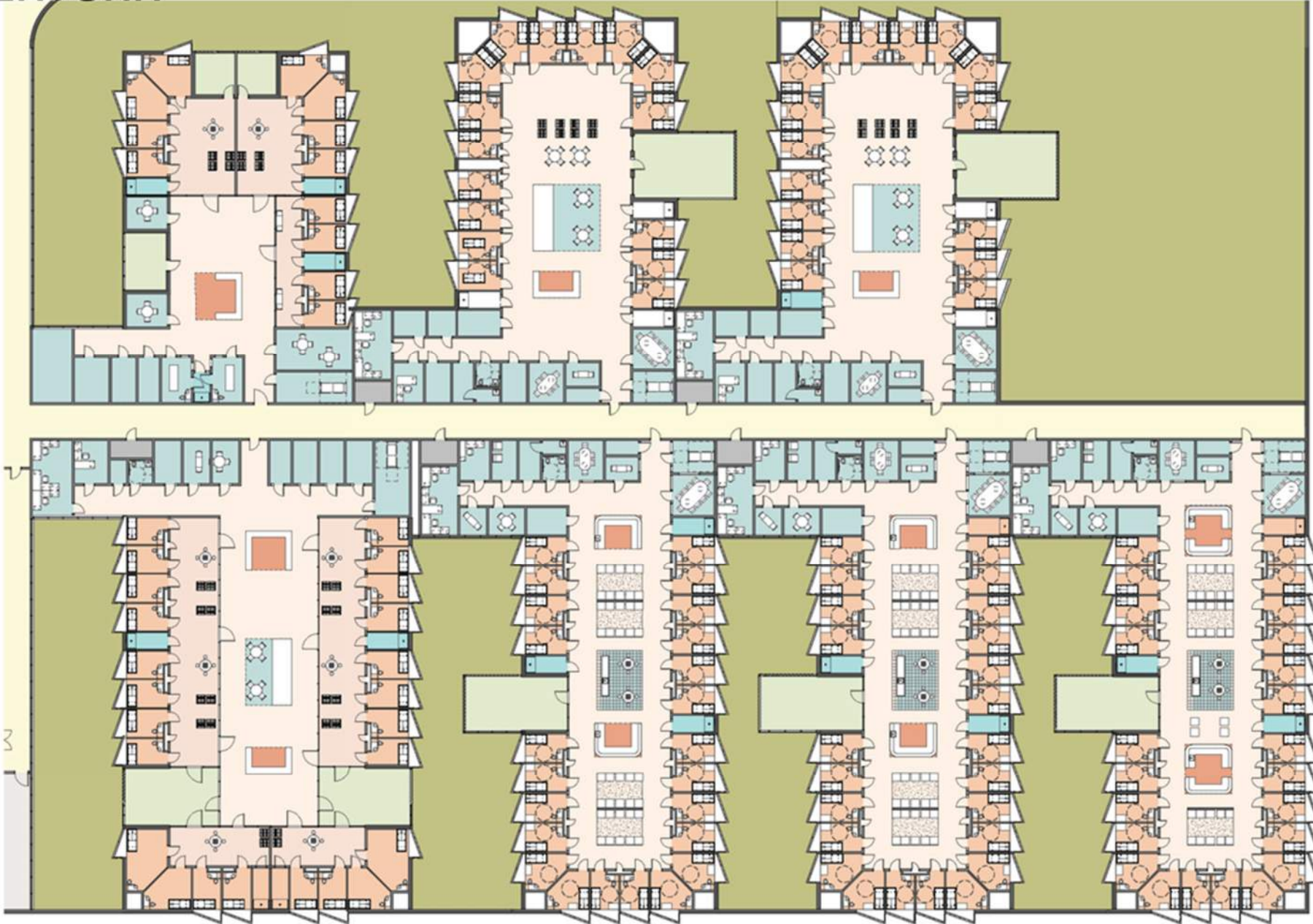
Preliminary – Not for Construction





MENTAL HEALTH UNIT

Preliminary – Not for Construction





# MENTAL HEALTH UNIT

## WOMEN'S UNIT

Preliminary – Not for Construction



JOLIET, IL | MAY 22, 2018



# MENTAL HEALTH UNIT

## MEN'S UNIT

Preliminary – Not for Construction



JOLIET, IL | MAY 22, 2018



# MENTAL HEALTH UNIT

COURTYARD VIEW

Preliminary – Not for Construction



JOLIET, IL | MAY 22, 2018





# MENTAL HEALTH UNIT

COURTYARD VIEW

Preliminary – Not for Construction



JOLIET, IL | MAY 22, 2018





# WINDOW CONCEPT

PHYSICAL MODEL

Preliminary – Not for Construction



JOLIET, IL | MAY 22, 2018



# MENTAL HEALTH UNIT

PATIENT ROOM INTERIOR

Preliminary – Not for Construction



JOLIET, IL | MAY 22, 2018



# MENTAL HEALTH UNIT

## DAYROOM SECTION

Preliminary – Not for Construction



# MENTAL HEALTH UNIT

## DAYROOM INTERIOR

Preliminary – Not for Construction

