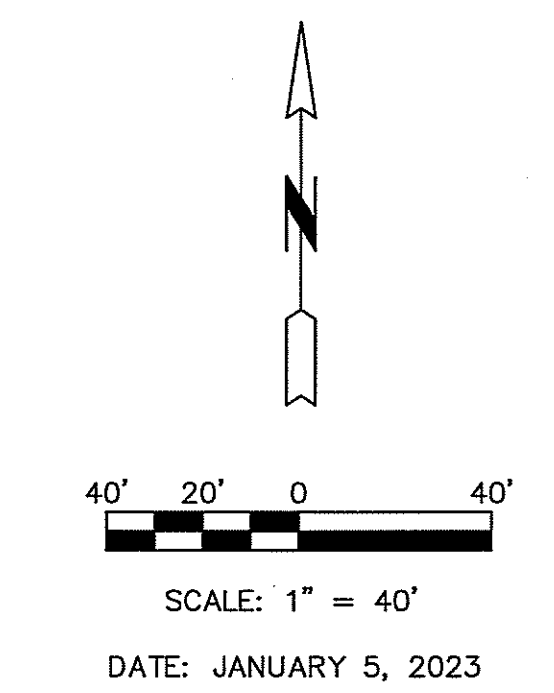


IV-2 Existing Site Survey & Existing Duct Bank Plans



- LEGEND**
- 100.00' - MEASURED DISTANCE (THIS SURVEY)
 - (100.00') - RECORDED DISTANCE (OR DEED DISTANCE)
 - - IRON PIN FOUND
 - - IRON PIN SET, 5/8"
 - - SANITARY SEWER (SIZE)
 - - FLARED END SECTION
 - ⊙ - BEEHIVE INLET
 - ⊕ - GRATE INLET
 - ⊖ - CURB INLET
 - ⊗ - MANHOLE
 - - STORM SEWER (SIZE)
 - ⊙ - LIGHT POLE
 - - POWER POLE
 - - GUY WIRE
 - - OVERHEAD FIBER OPTIC
 - - OVERHEAD ELECTRIC
 - - FENCE
 - - SIGN
 - - TREE LINE
 - ⊙ - TREE, DECIDUOUS (SIZE)
 - ⊙ - BUSHES
 - - GAS MAIN
 - - UNDERGROUND TELEPHONE
 - - UNDERGROUND ELECTRIC
 - - UNDERGROUND FIBER OPTIC
 - - UNDERGROUND CABLE TV
 - - WATER MAIN (SIZE)
 - ⊙ - ELECTRIC METER
 - ⊙ - ELECTRIC MANHOLE
 - ⊙ - ELECTRIC VEHICLE SERVICE
 - ⊙ - ELECTRIC BOX
 - ⊙ - ELECTRIC CONNECTION AT BUILDING
 - ⊙ - GAS REGULATOR
 - ⊙ - TELEPHONE MANHOLE
 - ⊙ - TELEPHONE PEDESTAL
 - ⊙ - WATER VALVE
 - ⊙ - FIRE DEPARTMENT CONNECTION
 - ⊙ - FIRE HYDRANT
 - - WATER MAIN (SIZE)
 - ⊙ - BOLLARD
 - ⊙ - DOWNSPOUT
 - - EXISTING CONTOUR, 1' INTERVAL
 - - EXISTING CONTOUR, 5' INTERVAL
 - - EXISTING BUILDING LIMITS
 - ⊙ - LATH WITH BORE INFORMATION

UTILITY COMPANIES & CONTACTS

CITY WATER, LIGHT AND POWER (CWLP) - WATER
 421 NORTH 11TH STREET
 SPRINGFIELD, ILLINOIS 62702
 ATTN: MIKE JOHNSON 789-2022

CITY WATER, LIGHT AND POWER (CWLP) - ELECTRIC
 1005 EAST MILLER
 SPRINGFIELD, ILLINOIS 62702
 ATTN: BRAD BIXBY 757-8520 X2163

AMEREN
 825 NORTH MACARTHUR BLVD.
 ROOM 201, MUNICIPAL CENTER WEST
 SPRINGFIELD, ILLINOIS 62702
 ATTN: MICHELE WILSON (GAS) 753-5187

COMCAST CABLE
 711 SOUTH DIRKSEN PARKWAY
 SPRINGFIELD, ILLINOIS 62703
 ATTN: DAVE BLY 788-5898 X68967

SANGAMON COUNTY WATER RECLAMATION DISTRICT
 3017 NORTH EIGHTH STREET ROAD
 SPRINGFIELD, ILLINOIS 62707
 ATTN: GREGG HUMPHREY 528-0491

OFFICE OF PUBLIC WORKS - SEWER
 ROOM 201, MUNICIPAL CENTER WEST
 CITY OF SPRINGFIELD, IL 62701
 ATTN: VINCE SMITH (217) 789-2244

OFFICE OF PUBLIC WORKS - CITY ENGINEER
 ROOM 201, MUNICIPAL CENTER WEST
 SPRINGFIELD, ILLINOIS 62702
 ATTN: NATE BOTTOM (217) 789-2282

CALL U.U.L.E. BEFORE YOU DIG, 800-892-0123

*FIELDWORK COMPLETED OCTOBER, 2022

*BASIS OF BEARING IS THE ILLINOIS STATE PLANE COORDINATE SYSTEM (NAD 83 - ILLINOIS WEST ZONE - U.S. SURVEY FOOT)

*VERTICAL DATUM IS NAVD88.

NO PART OF THIS PLAT IS LOCATED WITHIN A SPECIAL FLOOD HAZARD AS IDENTIFIED BY THE FEDERAL EMERGENCY MANAGEMENT AGENCY, PER MAP NUMBER 17167C0285F, (EFFECTIVE DATE: AUGUST 2, 2007).

"THIS PROFESSIONAL SERVICE CONFORMS TO THE CURRENT ILLINOIS MINIMUM STANDARDS FOR A BOUNDARY SURVEY."

"ALL INFORMATION SHOWN HEREON IS TRUE AND ACCURATELY SHOWN TO MY BEST KNOWLEDGE, INFORMATION AND BELIEF."

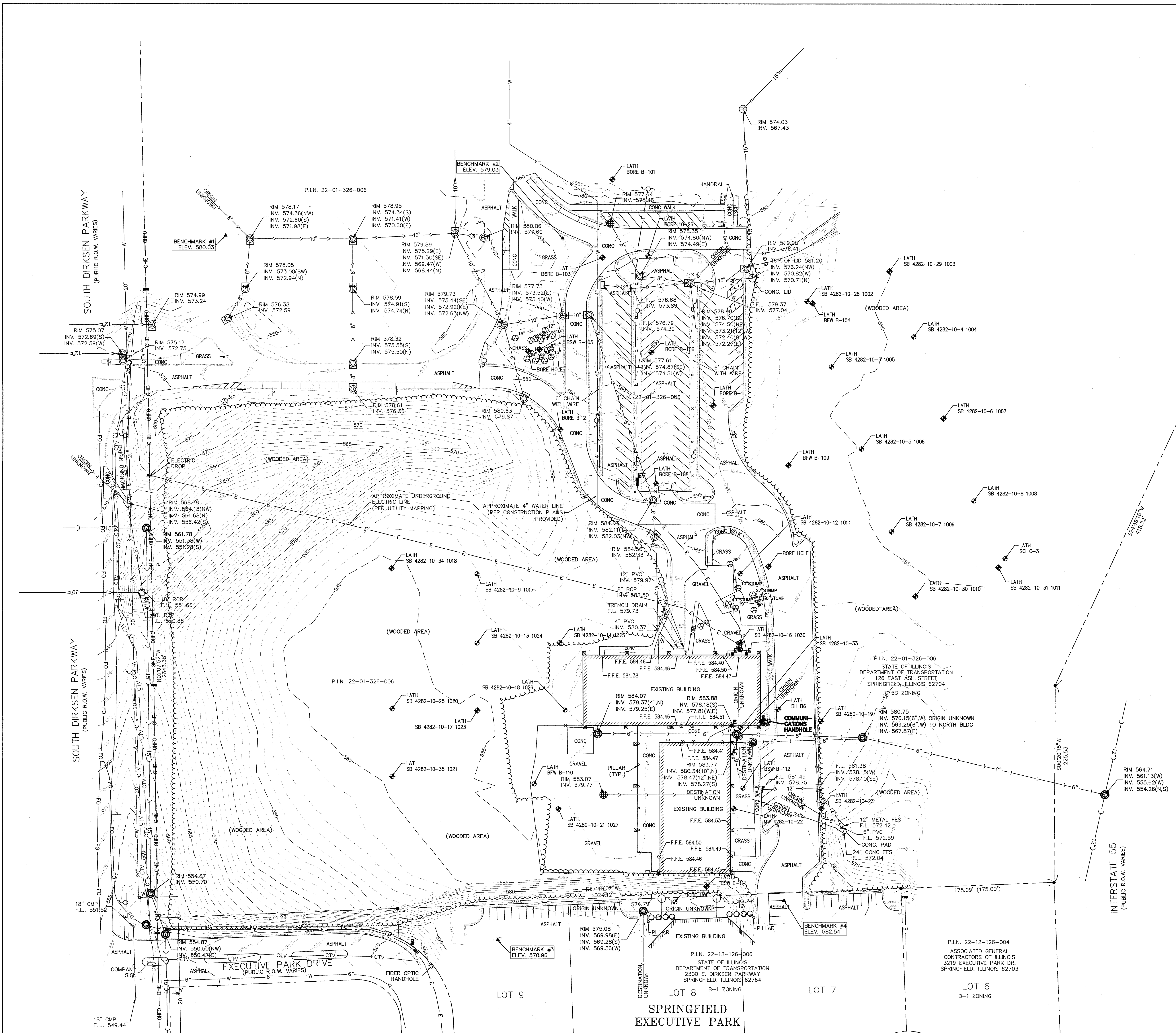
I HEREBY CERTIFY THAT, IN THE MONTH OF JANUARY, 2023, I MADE A SURVEY OF THE ABOVE DESCRIBED PROPERTY AND THE FOREGOING PLAT REPRESENTS THE RESULTS OF SAID SURVEY.

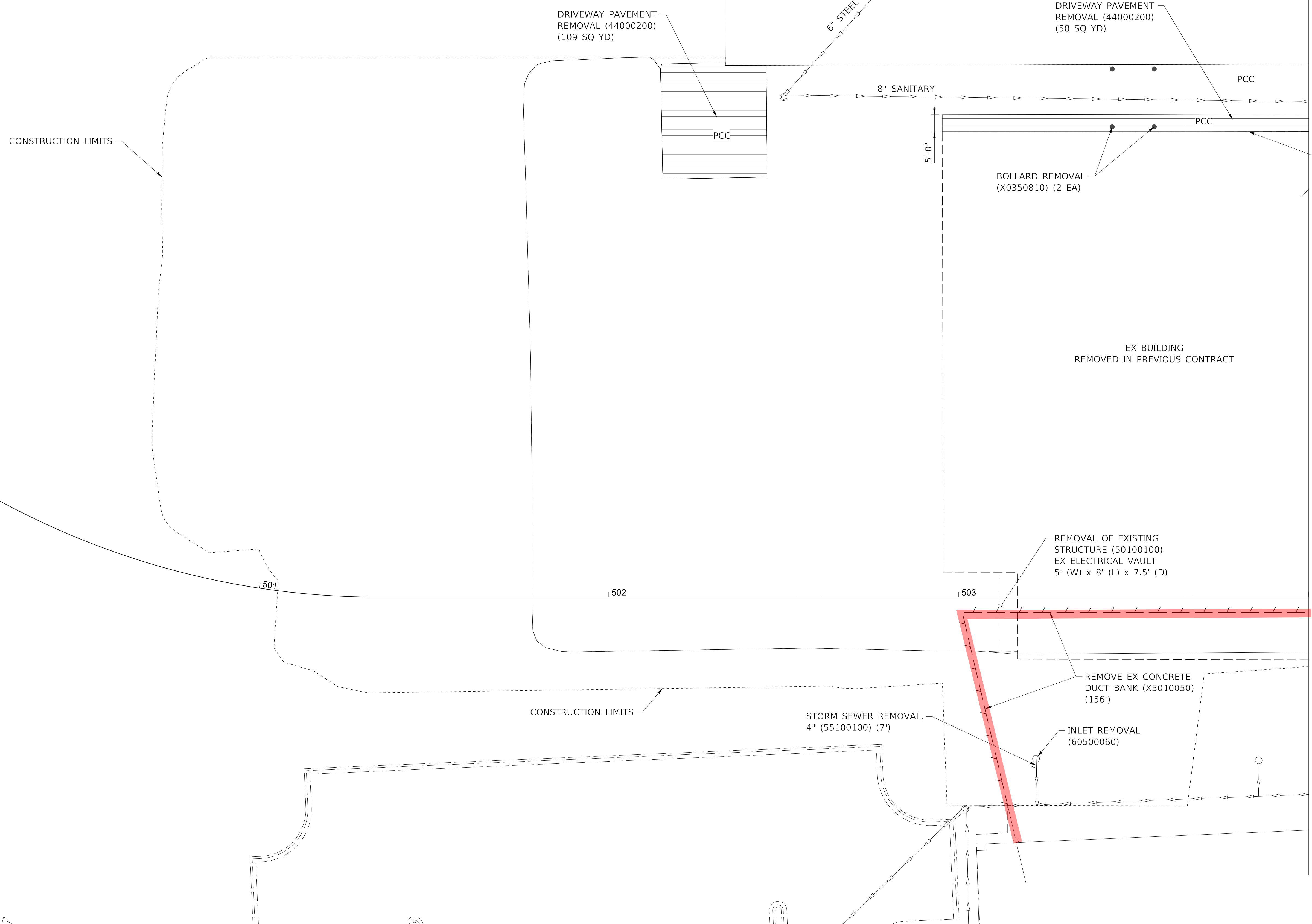
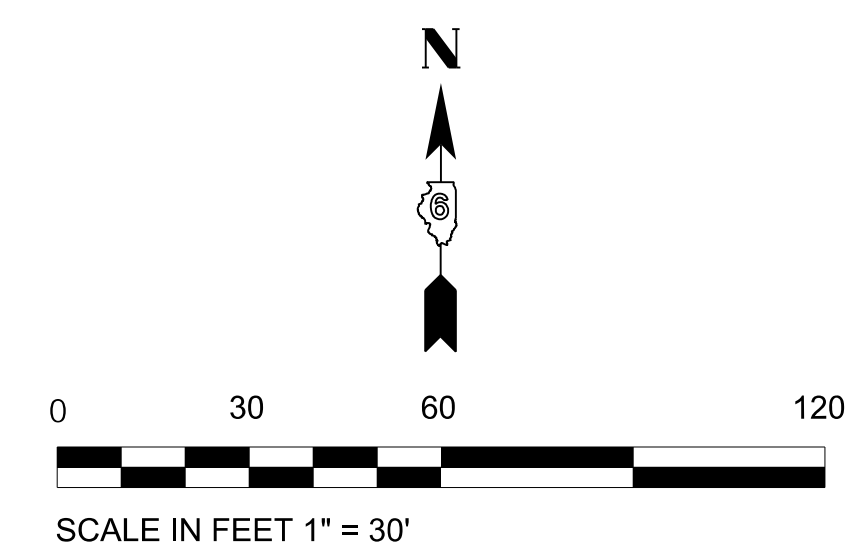
ILLINOIS PROFESSIONAL LAND SURVEYOR NO. 3804
 DATE SIGNED: JANUARY 5, 2023
 LICENSE EXP. DATE: NOV. 30, 2024



- BENCHMARKS**
- BENCHMARK #1: IRON PIN IN GRASS ISLAND OF PARKING AREA, ±147 NORTH OF THE EDGE OF PAVEMENT OF ENTRANCE ROAD AND ±5.5' EAST OF EDGE OF PAVEMENT OF WESTERLY (SOUTHBOUND) DRIVING AISLE FOR PARKING LOT. ELEV. 580.03
 - BENCHMARK #2: IRON PIN IN GRASS ISLAND, 385.40 FEET EAST OF BENCHMARK #1 AND ±3.8 FEET SOUTHWEST OF CURB OF DRIVING AISLE. ELEV. 579.03
 - BENCHMARK #3: MAG NAIL IN ASPHALT, IN PARKING LOT LOCATED SOUTHWEST OF THE SOUTH BUILDING, ±39.5' SOUTH OF NORTHWEST CORNER OF PARKING LOT AND 97' EAST OF A POWER POLE. ELEV. 570.96
 - BENCHMARK #4: MAG NAIL IN ASPHALT DRIVING AISLE, ±68.5' SOUTHEAST OF SOUTHEAST CORNER OF SOUTH BUILDING. ELEV. 582.54

- NOTES**
1. THE LOCATIONS OF UNDERGROUND UTILITIES AS SHOWN HEREON ARE BASED ON ABOVE GROUND STRUCTURES AND RECORD DRAWINGS PROVIDED BY THE SURVEYOR. LOCATIONS OF UNDERGROUND UTILITIES/STRUCTURES MAY VARY FROM LOCATIONS SHOWN HEREON. ADDITIONAL BURIED UTILITIES/ STRUCTURES MAY EXIST. NO EXCAVATIONS WERE MADE DURING THE PROGRESS OF THIS SURVEY TO LOCATE BURIED UTILITIES/STRUCTURES. A PRIVATE UTILITY LOCATOR DID NOT PROVIDE ON-SITE PRIVATE UTILITY LOCATIONS.
 2. TOPOGRAPHY SHOWN IS PRIOR TO ANY CONSTRUCTION ACTIVITIES ON SITE.
 3. ALL EXISTING BUILDING LIMITS SHOWN ARE AT GROUND LEVEL AND DO NOT REFLECT ABOVE GROUND OR SUB-SURFACE LOCATIONS.





NOTES:
EX CONCRETE FOOTING BURIED +/- 3.5 FT DEEP (80 FT (L) x 2.7 FT (W) x 1.0 FT (H))

MATCHLINE STATION 504+00
SEE SHEET NO. 16

LEGEND

	PAVEMENT REMOVAL
	DRIVEWAY PAVEMENT REMOVAL
	BIKE PATH REMOVAL
	COMBINATION CURB AND CUTTER REMOVAL
	SIDEWALK REMOVAL
	LINEAR REMOVAL

MODEL: Default
FILE NAME: P:\Rm\0931720\W09-08\Design\Drawg\CADD_Sheets\Removal_Plan-01.dgn



USER NAME = DBIakaj	DESIGNED - AW	REVISED -
PLOT SCALE = 180.0000 ' / ft.	DRAWN - DB	REVISED -
PLOT DATE = 3/1/2023	CHECKED - PH	REVISED -
	DATE - 01/26/2023	REVISED -

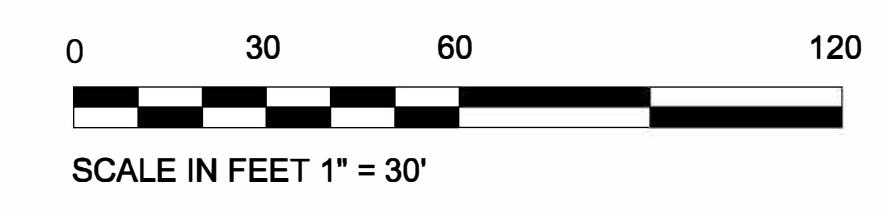
**STATE OF ILLINOIS
DEPARTMENT OF TRANSPORTATION**

**REMOVAL PLAN
(AREA 01)**

SCALE: 1" = 30' SHEET ___ OF ___ SHEETS STA. _____ TO STA. _____

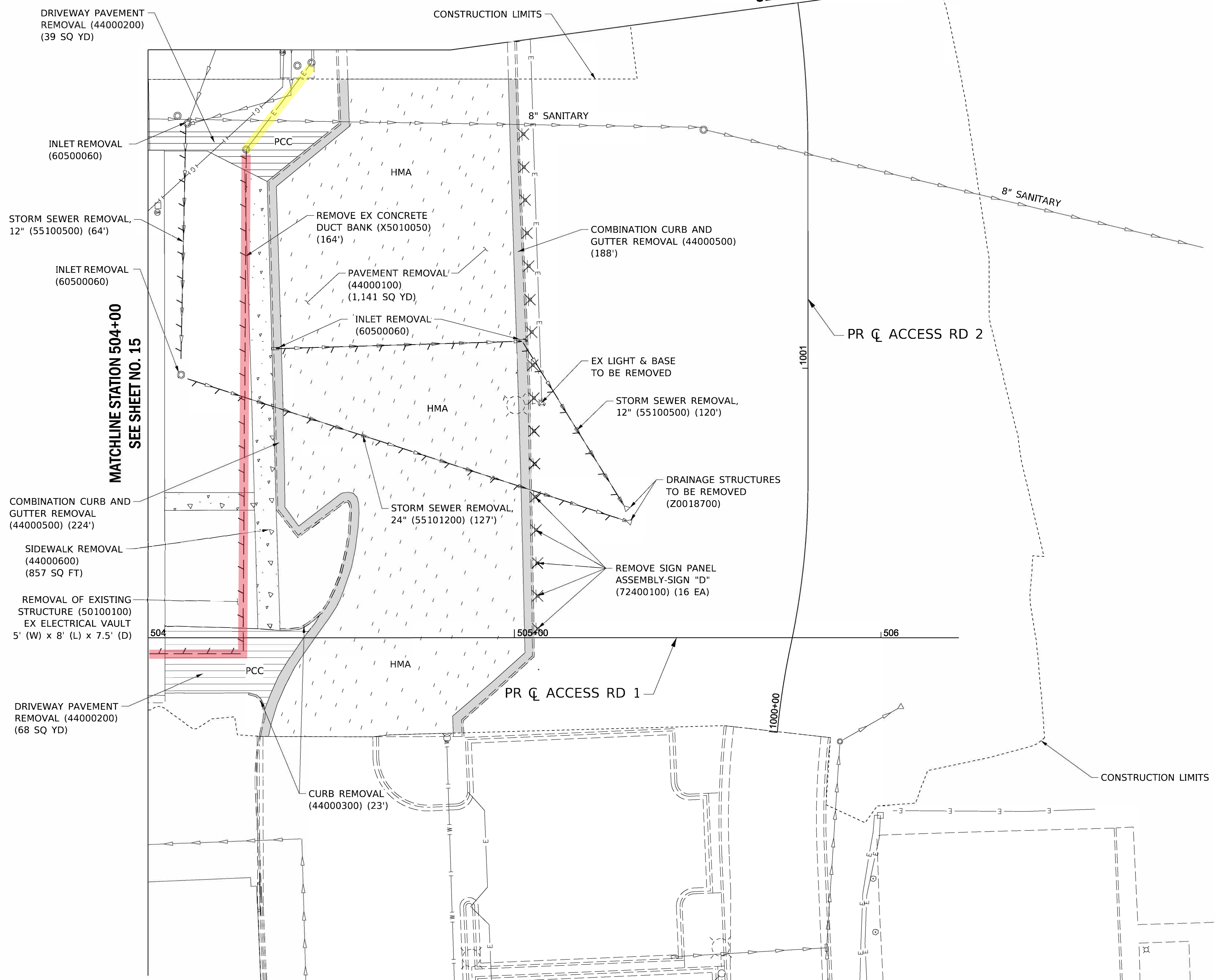
F.A.P. RTE.	SECTION	COUNTY	TOTAL SHEETS	SHEET NO.
663	HANLEY PARKING 2023	SANGAMON	90	15
			CONTRACT NO.	72403

ILLINOIS FED. AID PROJECT

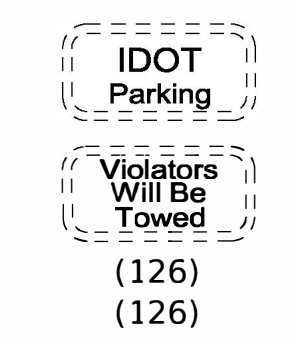


MATCHLINE STATION 1002+00
SEE SHEET NO. 17





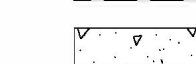
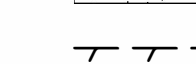
MATCHLINE STATION 504+00
SEE SHEET NO. 15



SIGN "D"



LEGEND

-  PAVEMENT REMOVAL
-  DRIVEWAY PAVEMENT REMOVAL
-  BIKE PATH REMOVAL
-  COMBINATION CURB AND CUTTER REMOVAL
-  SIDEWALK REMOVAL
-  LINEAR REMOVAL

MODEL: Default
FILE NAME: P:\R093120\W0-08\Design\DWG\CADD_Sheets\Removal_Plan_02.dgn



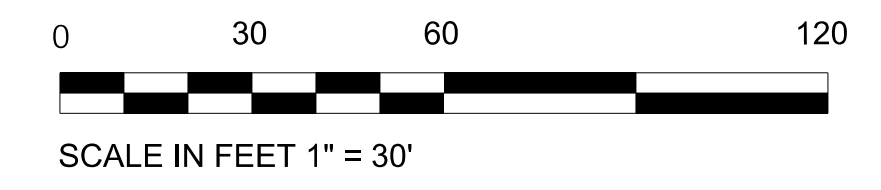
USER NAME = DBIakaj	DESIGNED - AW	REVISED -
PLOT SCALE = 180.0000' / ft.	DRAWN - DB	REVISED -
PLOT DATE = 3/1/2023	CHECKED - PH	REVISED -
	DATE - 01/26/2023	REVISED -

**STATE OF ILLINOIS
DEPARTMENT OF TRANSPORTATION**

**REMOVAL PLAN
(AREA 02)**

SCALE: 1" = 30' SHEET ___ OF ___ SHEETS STA. _____ TO STA. _____

F.A.P. RTE.	SECTION	COUNTY	TOTAL SHEETS	SHEET NO.
663	HANLEY PARKING 2023	SANGAMON	90	16
			CONTRACT NO.	72403
ILLINOIS FED. AID PROJECT				



MATCHLINE STATION 1004+50
SEE SHEET NO. 18

EX LIGHT & BASE
TO BE REMOVED

PAVEMENT REMOVAL
(44000100)
(111 SQ YD)

COMBINATION CURB AND
GUTTER REMOVAL (44000500)
(150')

HMA

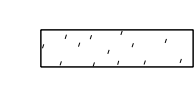


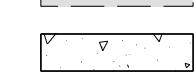
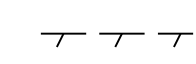
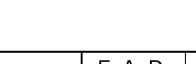
PR ϕ ACCESS RD 2

CONSTRUCTION LIMITS

CONSTRUCTION LIMITS

MATCHLINE STATION 1002+00
SEE SHEET NO. 16

LEGEND

-  PAVEMENT REMOVAL
-  DRIVEWAY PAVEMENT REMOVAL
-  BIKE PATH REMOVAL
-  COMBINATION CURB AND CUTTER REMOVAL
-  SIDEWALK REMOVAL
-  LINEAR REMOVAL

MODEL: Default
FILE NAME: P:\Rm093120\W0909\Design\DWG\CADD_Sheets\Removal_Plan-03.dgn



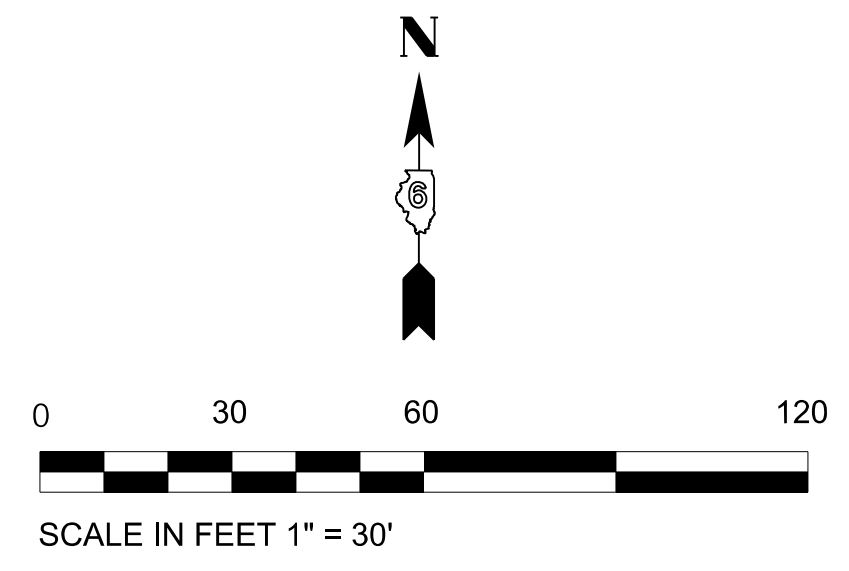
USER NAME = DBIakaj	DESIGNED - AW _____	REVISED - _____
	DRAWN - DB _____	REVISED - _____
PLOT SCALE = 1/80,0000' / ft.	CHECKED - PH _____	REVISED - _____
PLOT DATE = 3/1/2023	DATE - 01/26/2023	REVISED - _____

**STATE OF ILLINOIS
DEPARTMENT OF TRANSPORTATION**

**REMOVAL PLAN
(AREA 03)**

SCALE: 1" = 30' SHEET ___ OF ___ SHEETS STA. _____ TO STA. _____

F.A.P. RTE.	SECTION	COUNTY	TOTAL SHEETS	SHEET NO.
663	HANLEY PARKING 2023	SANGAMON	90	17
			CONTRACT NO. 72403	
ILLINOIS FED. AID PROJECT				



MATCHLINE STATION 1006+50
SEE SHEET NO. 19

PAVEMENT REMOVAL
(44000100)
(135 SQ YD)

COMBINATION CURB AND
GUTTER REMOVAL
(44000500)
(79')

CONSTRUCTION LIMITS

PR ϕ ACCESS RD 2

MATCHLINE STATION 1004+50
SEE SHEET NO. 17

COMBINATION CURB AND
GUTTER REMOVAL
(44000500)
(35')

PAVEMENT REMOVAL
(44000100)
(13 SQ YD)

CONSTRUCTION LIMITS

LEGEND

- PAVEMENT REMOVAL
- DRIVEWAY PAVEMENT REMOVAL
- BIKE PATH REMOVAL
- COMBINATION CURB AND CUTTER REMOVAL
- SIDEWALK REMOVAL
- LINEAR REMOVAL

MODEL: Default
FILE NAME: P:\Rm093120\W0909\Design\DWG\CADD_Sheets\Removal_Plan-04.dgn



USER NAME = DBIakaj	DESIGNED - AW	REVISED -
	DRAWN - DB	REVISED -
PLOT SCALE = 1/80,0000' / ft.	CHECKED - PH	REVISED -
PLOT DATE = 3/1/2023	DATE - 01/26/2023	REVISED -

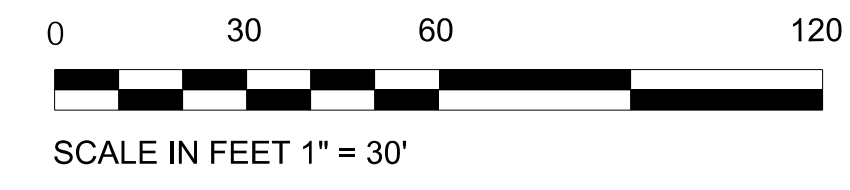
**STATE OF ILLINOIS
DEPARTMENT OF TRANSPORTATION**

**REMOVAL PLAN
(AREA 04)**

SCALE: 1" = 30' SHEET ___ OF ___ SHEETS STA. _____ TO STA. _____

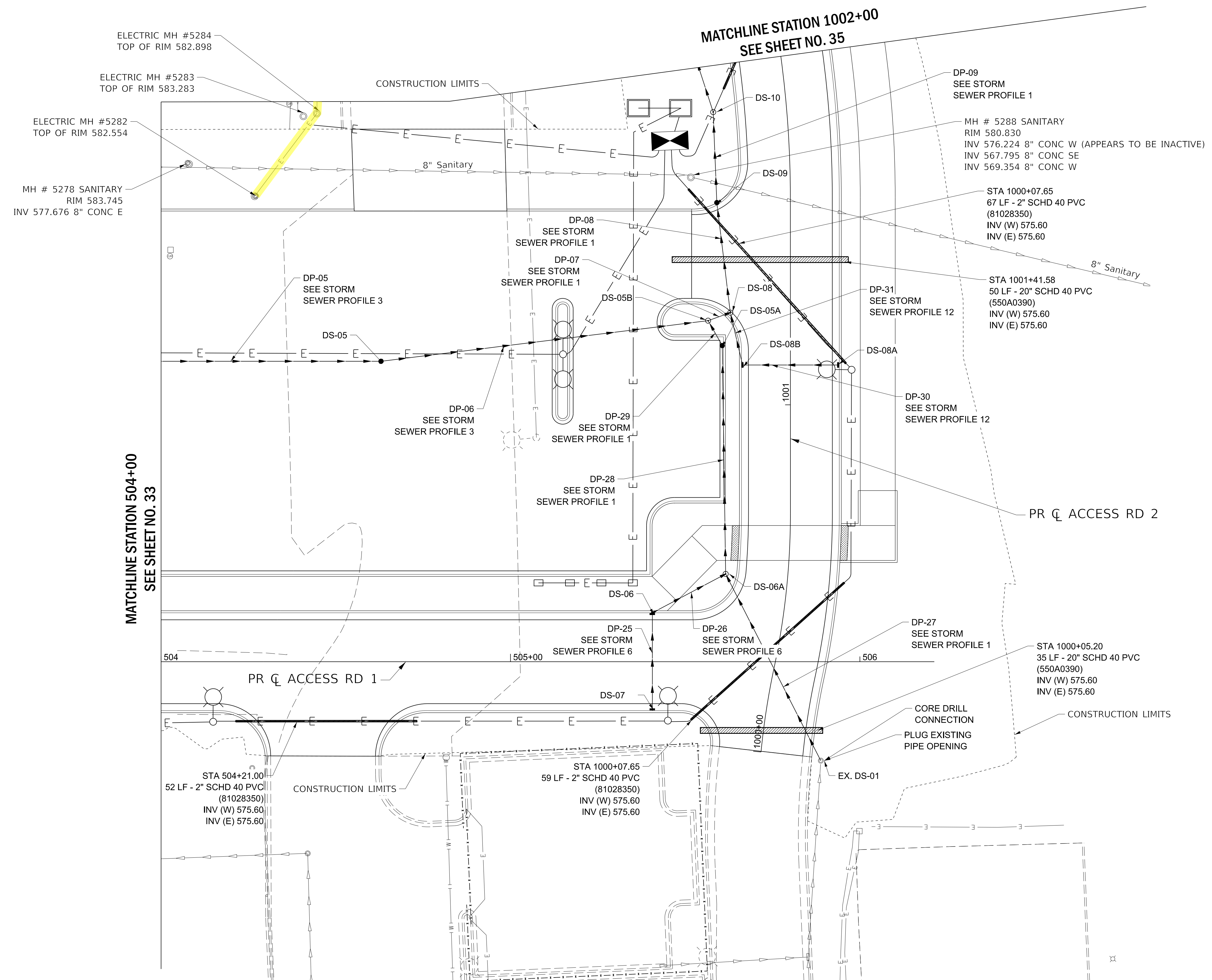
F.A.P. RTE.	SECTION	COUNTY	TOTAL SHEETS	SHEET NO.
663	HANLEY PARKING 2023	SANGAMON	90	18
			CONTRACT NO. 72403	

ILLINOIS FED. AID PROJECT



UTILITY PLAN NOTES

- 1. SEE SHEET 41 FOR PIPE AND STRUCTURE TABLES



MATCHLINE STATION 504+00
SEE SHEET NO. 33

MATCHLINE STATION 1002+00
SEE SHEET NO. 35

MODEL: Default
FILE NAME: P:\Rm093120\WC-06\Design\DWG\CADD_Sheets\Utilities_Site-02.dgn



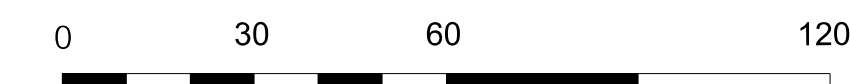
USER NAME = DBIakaj	DESIGNED - AW	REVISED -
	DRAWN - DB	REVISED -
PLOT SCALE = 1/80,0000' / ft.	CHECKED - PH	REVISED -
PLOT DATE = 3/1/2023	DATE - 01/26/2023	REVISED -

**STATE OF ILLINOIS
DEPARTMENT OF TRANSPORTATION**

**UTILITY AND DRAINAGE PLAN
(AREA 02)**

SCALE: 1" = 30' SHEET OF SHEETS STA. TO STA.

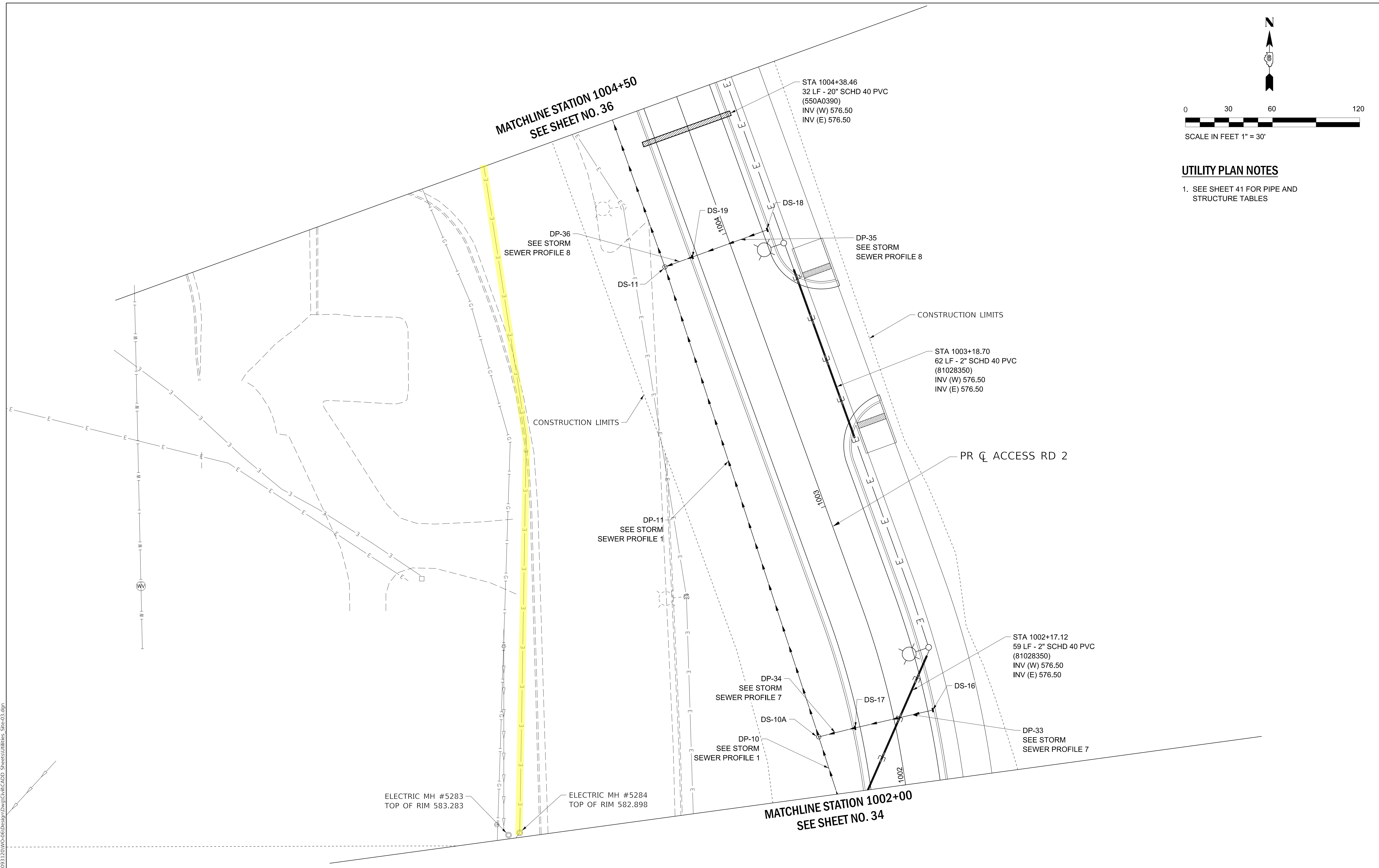
F.A.P. RTE.	SECTION	COUNTY	TOTAL SHEETS	SHEET NO.
663	HANLEY PARKING 2023	SANGAMON	90	34
			CONTRACT NO.	72403
ILLINOIS FED. AID PROJECT				



SCALE IN FEET 1" = 30'

UTILITY PLAN NOTES

- SEE SHEET 41 FOR PIPE AND STRUCTURE TABLES



MODEL: Default
 FILE NAME: P:\Rm093120\06-08\Design\DWG\CADD_Sheets\Utilities_Site-03.dwg



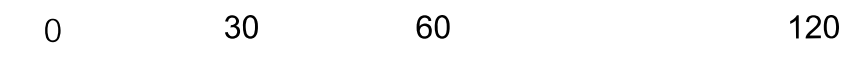
USER NAME = DBIakaj	DESIGNED - AW	REVISED -
PLOT SCALE = 180.0000 ' / ft.	DRAWN - DB	REVISED -
PLOT DATE = 3/1/2023	CHECKED - PH	REVISED -
	DATE - 01/26/2023	REVISED -

**STATE OF ILLINOIS
DEPARTMENT OF TRANSPORTATION**

**UTILITY AND DRAINAGE PLAN
(AREA 03)**

SCALE: 1" = 30' SHEET OF SHEETS STA. TO STA.

F.A.P. RTE.	SECTION	COUNTY	TOTAL SHEETS	SHEET NO.
663	HANLEY PARKING 2023	SANGAMON	90	35
CONTRACT NO.			72403	
ILLINOIS FED. AID PROJECT				



SCALE IN FEET 1" = 30'

UTILITY PLAN NOTES

- SEE SHEET 41 FOR PIPE AND STRUCTURE TABLES

MATCHLINE STATION 1006+50
SEE SHEET NO. 37

MATCHLINE STATION 1004+50
SEE SHEET NO. 35

STA 1006+08.76
38 LF - 6" STEEL CONDUIT
(81028260)
INV (W) 578.00
INV (E) 578.00

PR ϕ ACCESS RD 2

DP-37
SEE STORM
SEWER PROFILE 9

CONSTRUCTION LIMITS

DS-21

DS-12

DP-38
SEE STORM
SEWER PROFILE 9

DP-12
SEE STORM
SEWER PROFILE 1

ELECTRIC MH #15022
TOP 583.739

CONSTRUCTION LIMITS

DP-13
SEE STORM
SEWER PROFILE 1

EX CONCRETE DUCT BANK

8" RCCP

8" RCCP

INLET #5299
584.064
INV 581.574 8" CONC. NW

MODEL: D:\default
FILE NAME: P:\Rm093120\W0-06\Design\DWG\CADD_Sheets\Utilities_Site-04.dgn



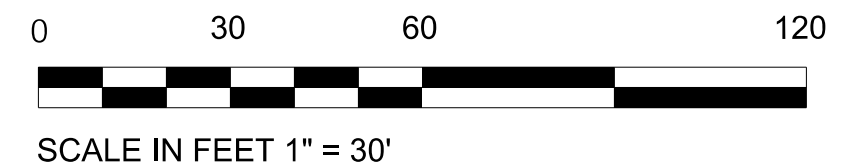
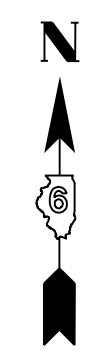
USER NAME = DBIakaj	DESIGNED - AW	REVISED -
PLOT SCALE = 180.0000' / ft.	DRAWN - DB	REVISED -
PLOT DATE = 3/1/2023	CHECKED - PH	REVISED -
	DATE - 01/26/2023	REVISED -

STATE OF ILLINOIS
DEPARTMENT OF TRANSPORTATION

UTILITY AND DRAINAGE PLAN
(AREA 04)

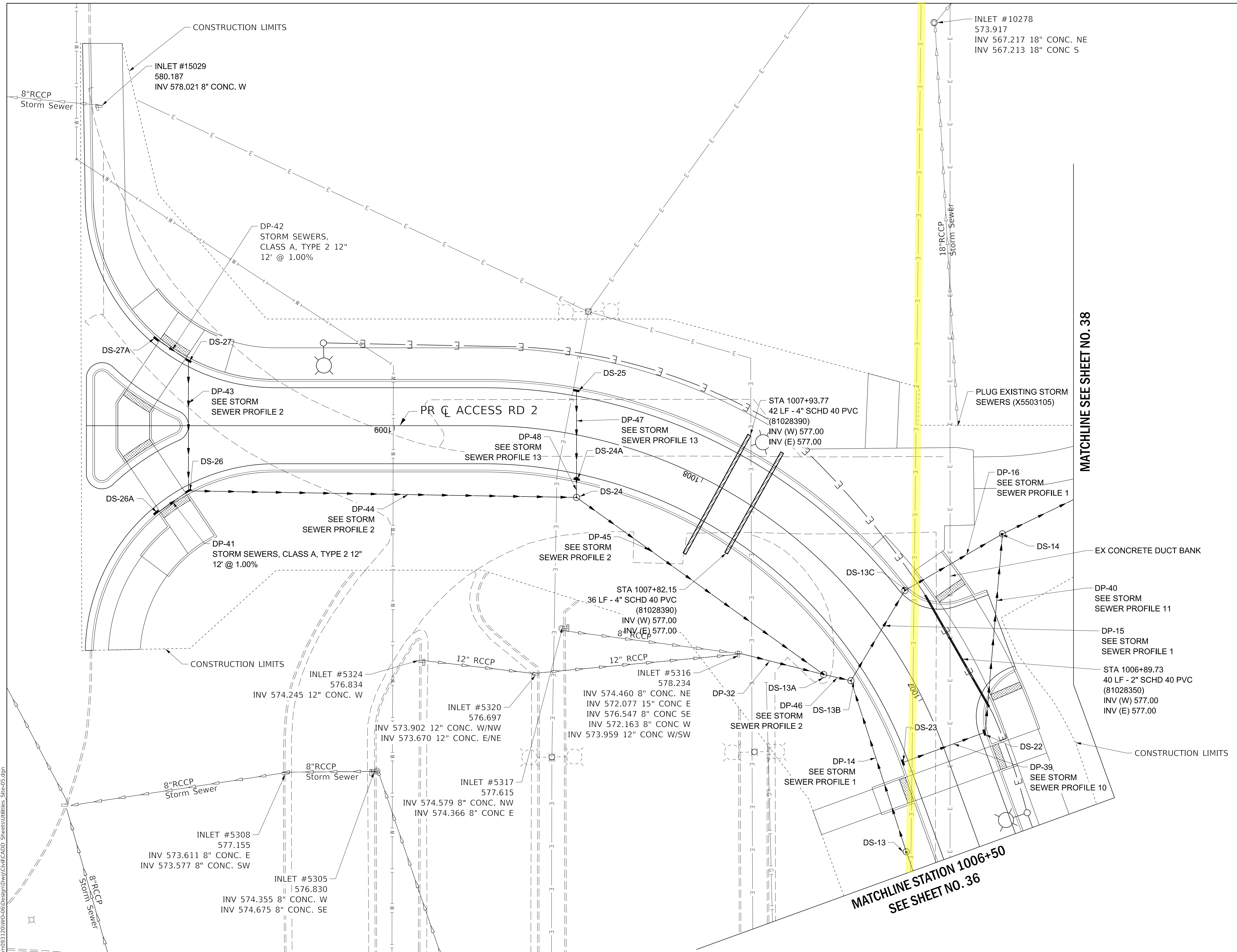
SCALE: 1" = 30' SHEET OF SHEETS STA. TO STA.

F.A.P. RTE.	SECTION	COUNTY	TOTAL SHEETS	SHEET NO.
663	HANLEY PARKING 2023	SANGAMON	90	36
			CONTRACT NO. 72403	
ILLINOIS FED. AID PROJECT				



UTILITY PLAN NOTES

- 1. SEE SHEET 41 FOR PIPE AND STRUCTURE TABLES



MATCHLINE SEE SHEET NO. 38

MATCHLINE STATION 1006+50
SEE SHEET NO. 36

MODEL: Default
FILE: M:\ME_P\10093120\10093120\DWG\Design\DWG\CADD_Sheets\Utilities_Site-05.dwg



USER NAME = DBIakaj	DESIGNED - AW	REVISED -
PLOT SCALE = 180.0000' / ft.	DRAWN - DB	REVISED -
PLOT DATE = 3/1/2023	CHECKED - PH	REVISED -
	DATE - 01/26/2023	REVISED -

**STATE OF ILLINOIS
DEPARTMENT OF TRANSPORTATION**

**UTILITY AND DRAINAGE PLAN
(AREA 05)**

SCALE: 1" = 30' SHEET OF SHEETS STA. TO STA.

F.A.P. RTE.	SECTION	COUNTY	TOTAL SHEETS	SHEET NO.
663	HANLEY PARKING 2023	SANGAMON	90	37
CONTRACT NO.			72403	
ILLINOIS FED. AID PROJECT				