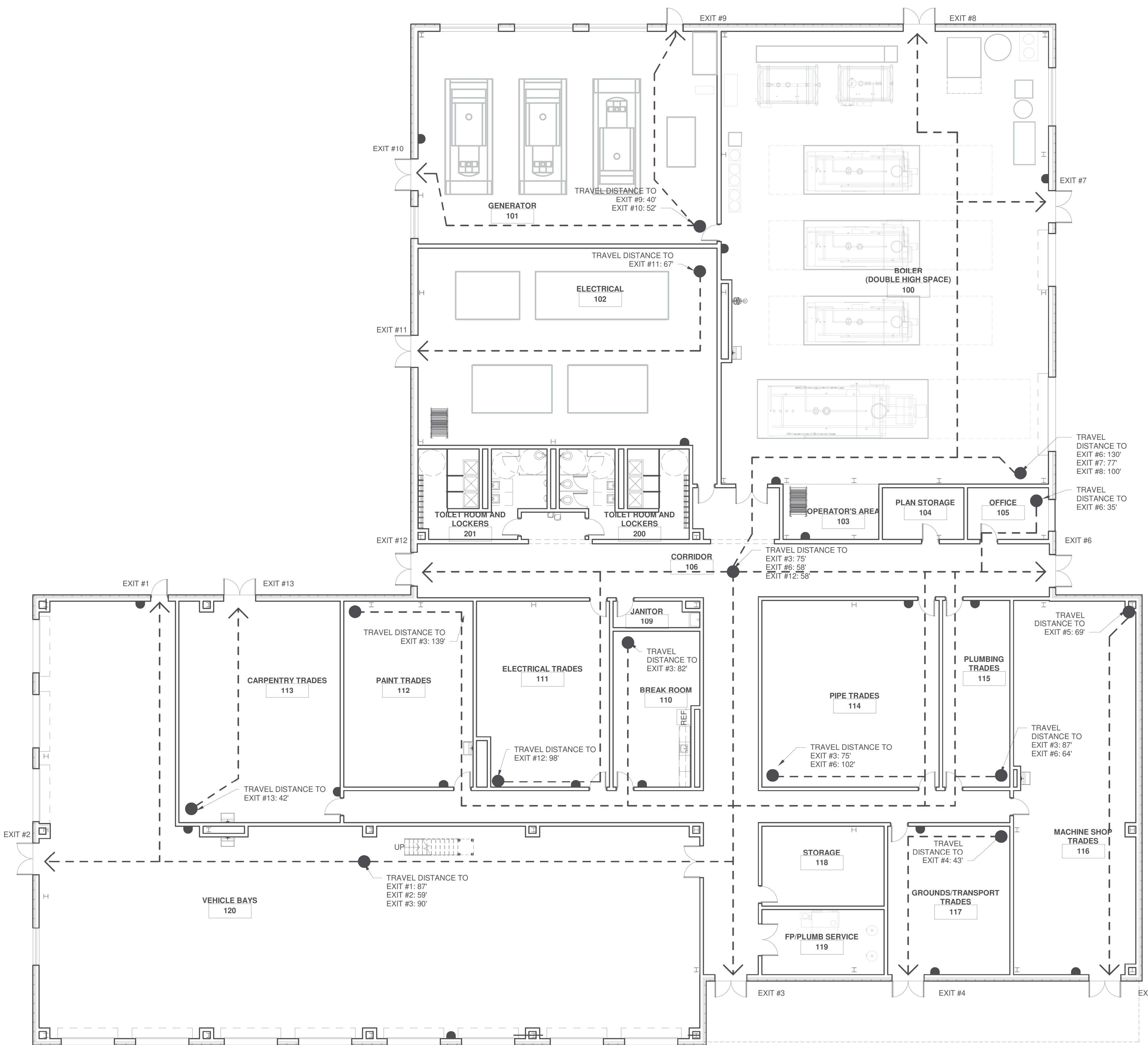


LIFE SAFETY PLAN NOTES

BUILDING DATA

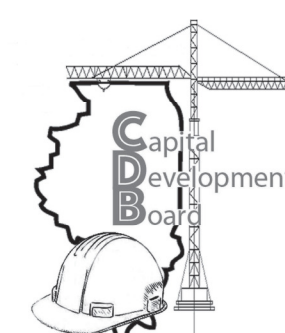
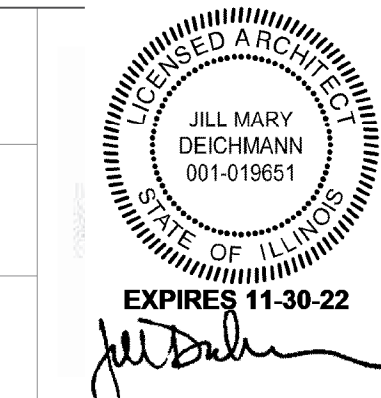
- BUILDING CODES ADOPTED:
- NATIONAL FIRE PROTECTION ASSOCIATION / NFPA 101 LIFE SAFETY CODE 2015 EDITION
- INTERNATIONAL BUILDING CODE -2018 EDITION
- INTERNATIONAL FIRE CODE - 2018 EDITION
- INTERNATIONAL MECHANICAL CODE-2018 EDITION
- INTERNATIONAL FUEL GAS CODE-2018 EDITION
- NATIONAL ELECTRIC CODE-2017 EDITION
- ILLINOIS PLUMBING CODE-2014 EDITION
- ILLINOIS ENERGY CONSERVATION CODE-2018
- ILLINOIS ACCESSIBILITY CODE-2018 EDITION
- 2010 ADA STANDARDS FOR ACCESSIBILITY DESIGN (FEDERAL)



1 1ST FLOOR PLAN
3/32" = 1'-0"

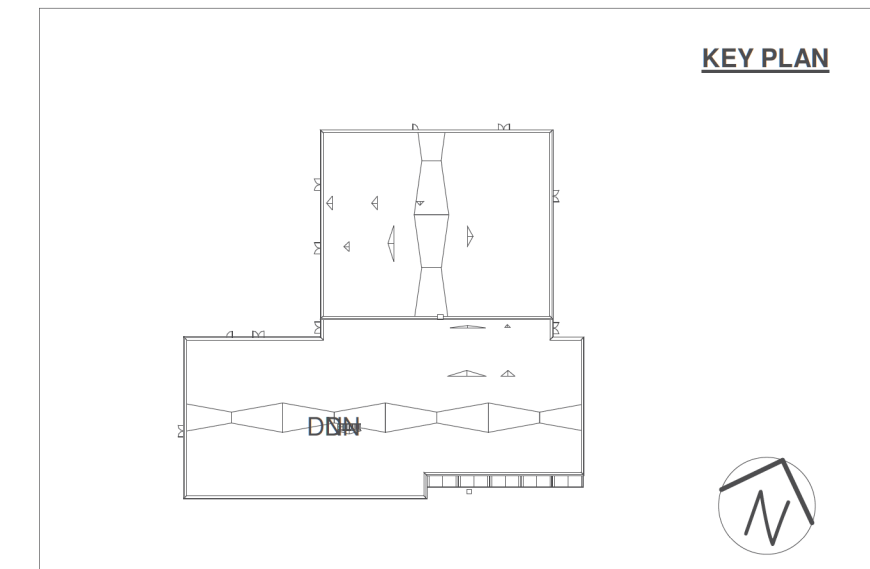
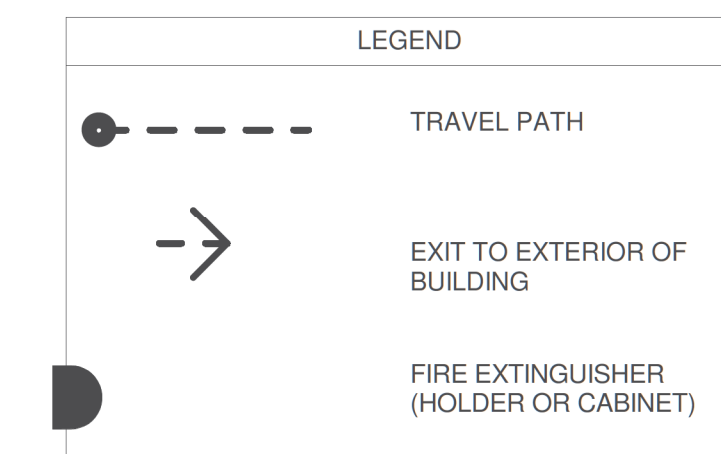
NOTE: CONTRACTOR SHALL OBTAIN AND VERIFY ALL DIMENSIONS AND CONDITIONS AT JOB SITE AND BE FULLY RESPONSIBLE FOR SAME.

REVISIONS			DRAWN	PREPARED
NO.	DATE	REMARKS	O.A.	O.A.
	04/22/21		TRACED	APPROVED
			CHECKED	APPROVED
			J.D.	J.D.



State of Illinois
JB PRITZKER, GOVERNOR
Illinois Capital Development Board

Code Matrix - CDB Form Revision Level: 03.15.2021						
Item	Code Subject	Model Code/ Edition	Chapter/ Section/ Table	Requirement/ Allowable	Actual	Comments
PART 1- BUILDING REQUIREMENTS						
Occupancy Classification						
Occupancy Category	IBC 2018	306		F1=300sf/occ and 52 = 200sf/occ	110 occ	Actual occupancy will be 20 or less
Building Occupancy	IBC 2018				S-2/F-2	Power Plant/Interior Parking
Height/ area limitations						
Number of stories	IBC 2018	504.4	2		1	
Height	IBC 2018	504.3		45 ft	27'-4"	
Area per story	IBC 2018	506.2		unlimited	28,617	
Types of Construction	IBC 2018	601			II-B	
Required hours of fire resistance						
Exterior bearing walls	IBC 2018	601		0 hrs	0 hrs	
Interior bearing walls	IBC 2018	601		0 hrs	0 hrs	
Floor construction	IBC 2018	601		0 hrs	0 hrs	Mezzanine floor = 2 hr
Structural frame	IBC 2018	601		0 hrs	0 hrs	
Roof construction	IBC 2018	601		0 hrs	0 hrs	
Fire resistive requirements						
Exterior wall fire resistance rating (separation distance)	IBC 2018	602		0 hrs	2 hrs	
Opening protected						
Door at 2 hour walls	IBC 2018	716.1		B-labeled	B-labeled	
Door at exterior walls	IBC 2018	716.1		no Rating	no Rating	
Incidental use areas						
Boiler room	IBC 2018	509		1 hr	2 hr	
Paint shops	IBC 2018	509		1 hr	2 hr	
Corridor	IBC 2018	1020.1		0 hr	0 hr	
PART 2- EXIT REQUIREMENTS						
Means of egress						
Exit signs	IBC 2018	1013			complies	
Tactile exit signs	IBC 2018	1013.4			complies	
Portable fire extinguishers	IBC 2018			max 75 ft	complies	
Means of egress illumination						
Illumination level	IBC 2018	1008.2.1		1 fc	complies	
Emergency power source	IBC 2018	1008.3		EM power	complies	
Exit Access Requirements						
Min. number building exits	IBC 2018	1006.2		2 exits	3	Equipment rooms have exterior exits
Maximum number occupants for single exit	IBC 2018					
Min. exits per space	IBC 2018	1006.2		1	2	
Maximum common path of egress travel distance	IBC 2018					
Maximum travel distance to an exit access	IBC 2018	1017.2		250'-0"	150'-0"	
Maximum dead end corridor length	IBC 2018	1020.4		50'-0"	47'-0"	
Minimum corridor width	IBC 2018	1020.2		44"	6'-0"	
Exit door capacity	IBC 2018	1005.3.2		0.2 inch/occ	36" min	
PART 3- ACCESSIBILITY (ILLINOIS ACCESSIBILITY CODE)						
Exceptions/ Waivers	IAC 2018	203.9		employee work areas are ADA compliant	complies	Exempt for equipment access and mezzanine areas
Parking requirements	IAC 2018	208.2		5	2	actual occupancy will be 20 or less
PART 4- PLUMBING REQUIREMENTS						
Illinois Plumbing Code	2014 IPC	890.810		500sf/occ	60 occ	
Fixture requirements	2014 IPC	890.810		30 occ/gender		
Water closets/ urinals	2014 IPC	890.810		2	3	
Lavatories	2014 IPC	890.810		2	4	
Drinking fountains	2014 IPC	890.810		1	1	
Showers	2014 IPC	890.810		3	3	

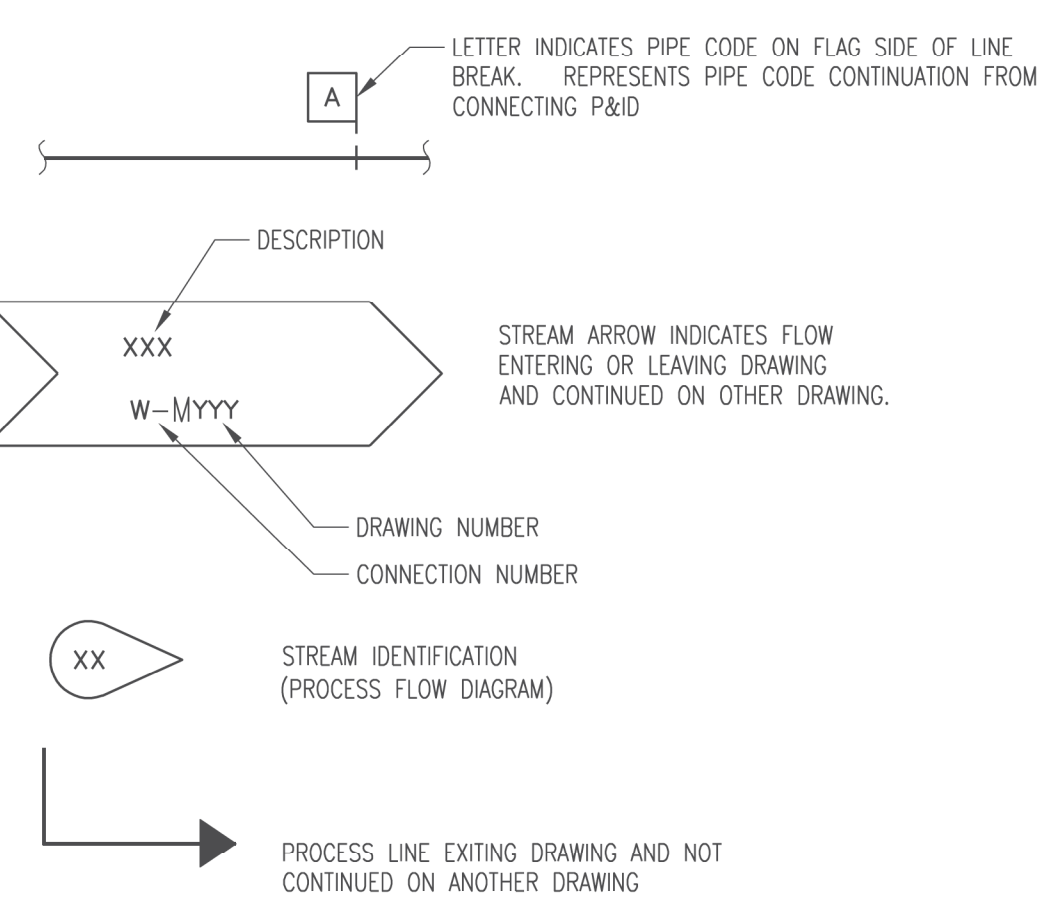
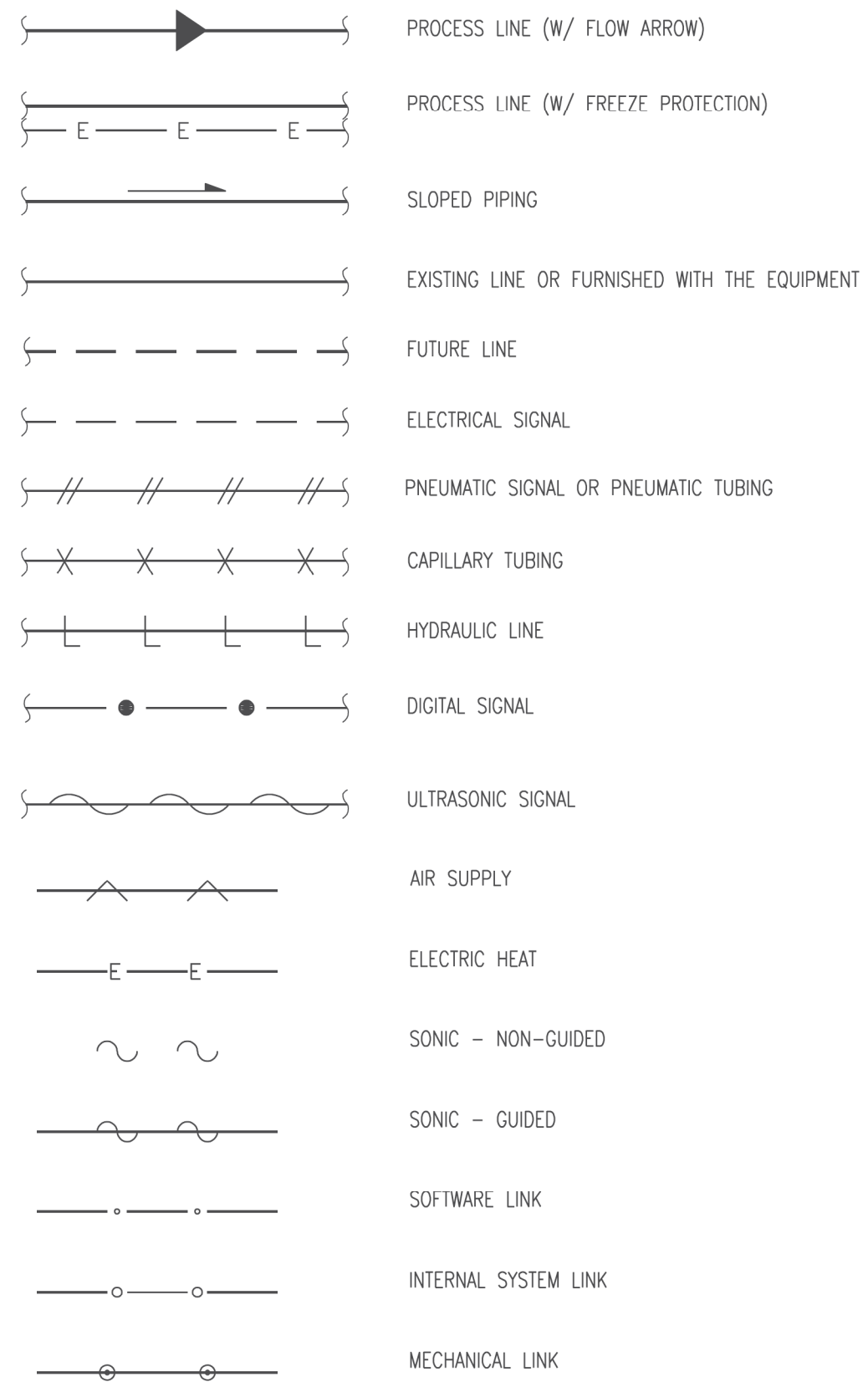


ADDENDUM 01
09/08/2021

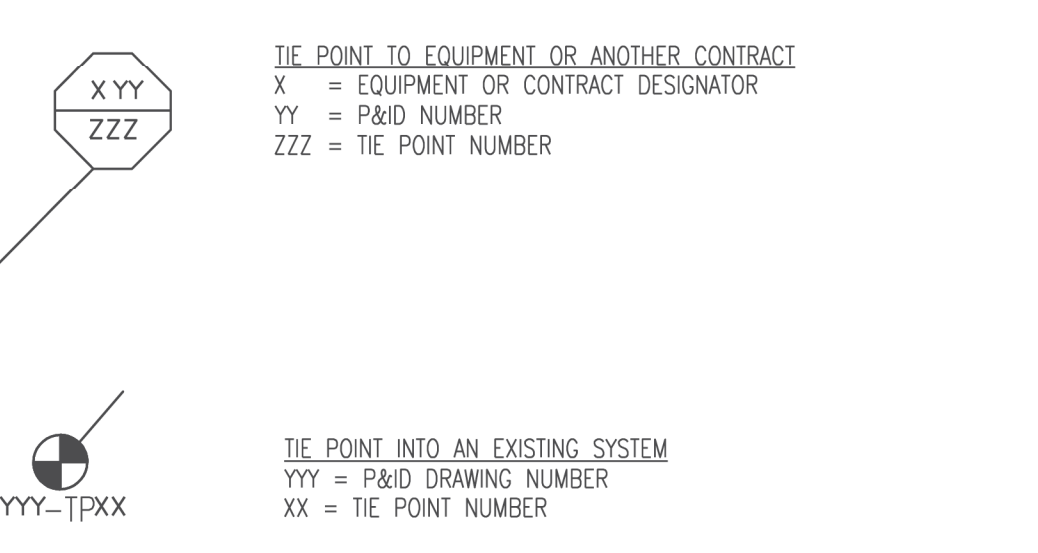
LIFE SAFETY PLAN
NEW POWER PLANT
ELGIN MENTAL HEALTH CENTER
750 SOUTH STATE SREET
ELGIN, KANE COUNTY, ILLINOIS

PROJECT NO.
321-055-138
DATE
04/22/21
SHEET NO.
G-2
2 OF 51 SHEETS

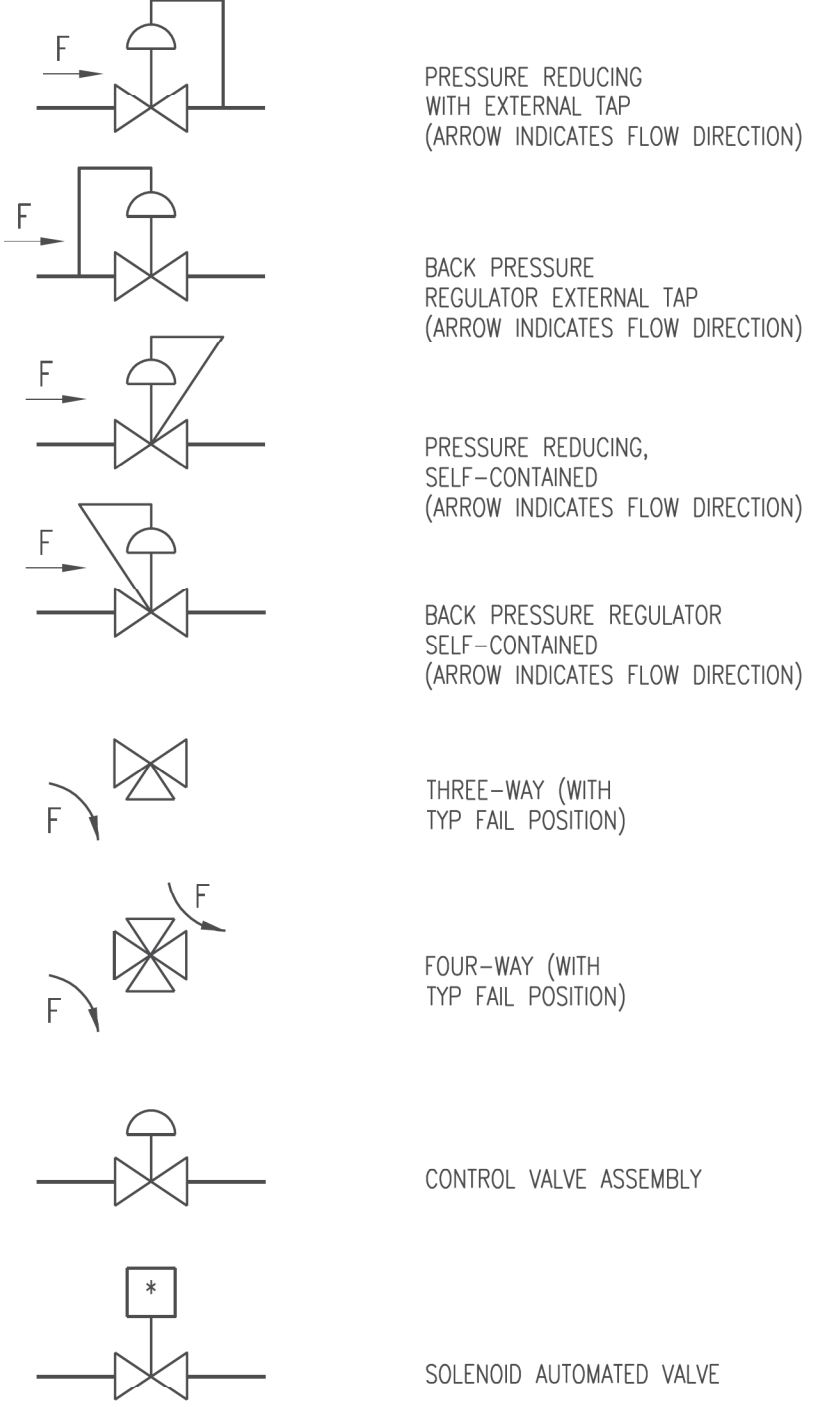
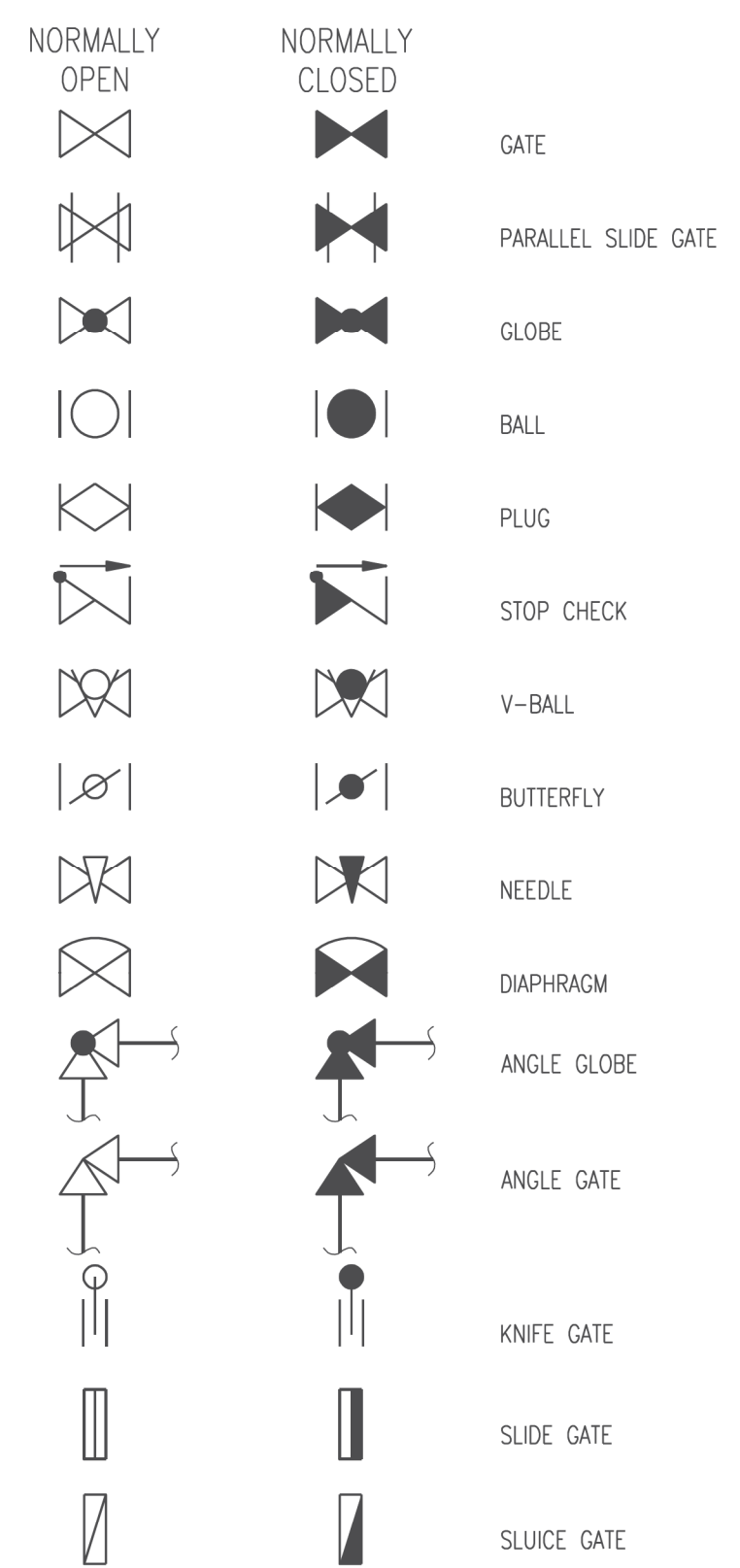
LINES



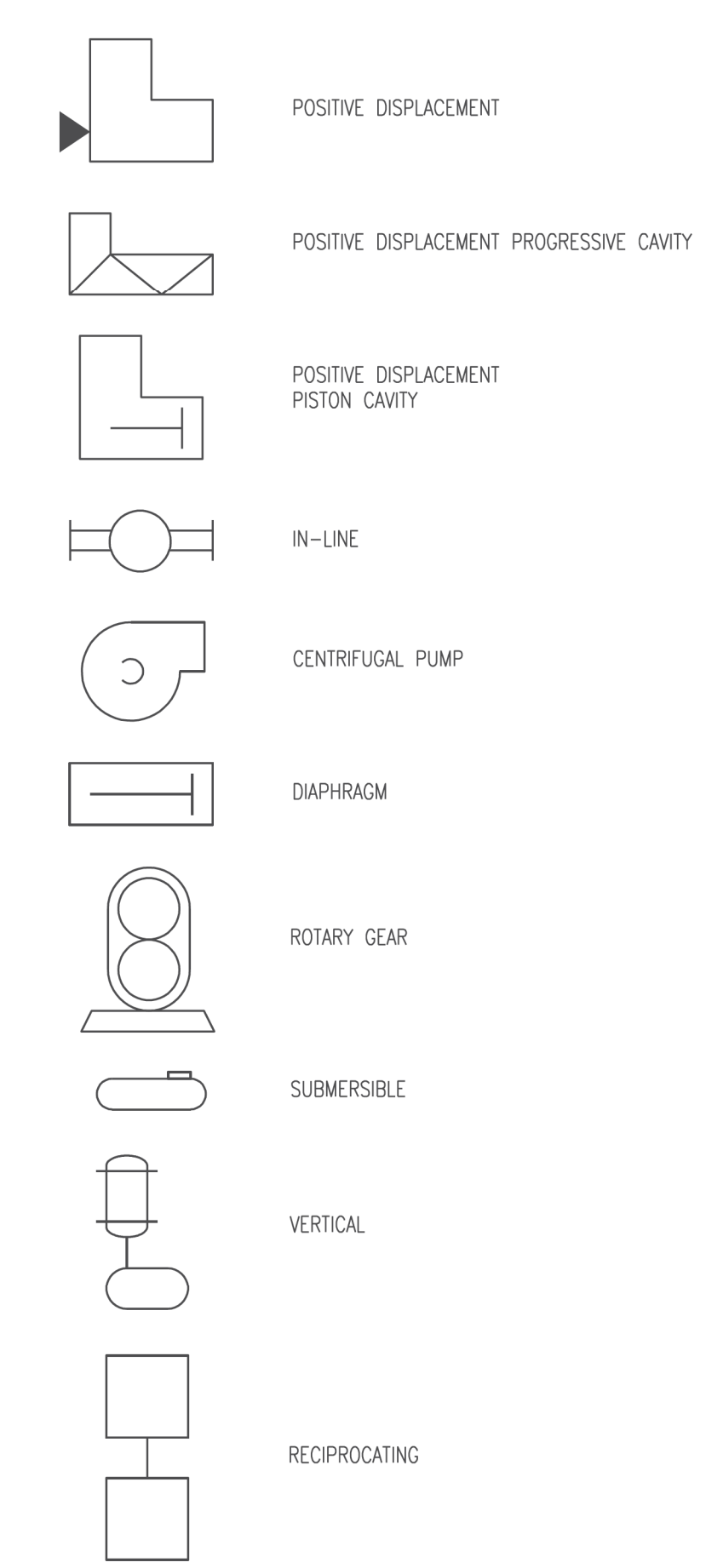
TIE POINT DESIGNATORS



VALVES



PUMPS



EQUIPMENT



GENERAL NOTES

1. ALL SYMBOLS AND ABBREVIATIONS SHOWN ON THIS LEGEND MAY NOT APPEAR ON THIS SET OF DRAWINGS.

ADDENDUM 01
09/08/2021

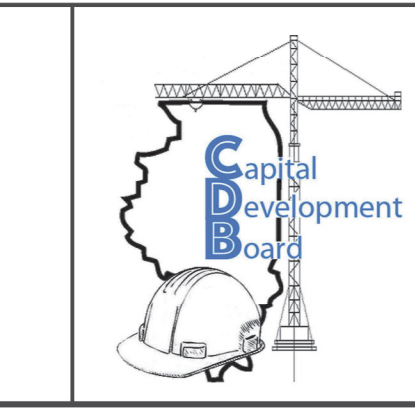
NOTE: CONTRACTOR SHALL OBTAIN AND VERIFY ALL DIMENSIONS AND CONDITIONS AT JOB SITE AND BE FULLY RESPONSIBLE FOR SAME.

5/5/2021 10:51 AM SCI [P] # 29390.01.00 (PW-CDB)

REVISIONS			DRAWN	PREPARED
NO.	DATE	REMARKS	B.K.	---
			TRACED	APPROVED
			---	---
			CHECKED	APPROVED
			M.D.W.	M.D.W.

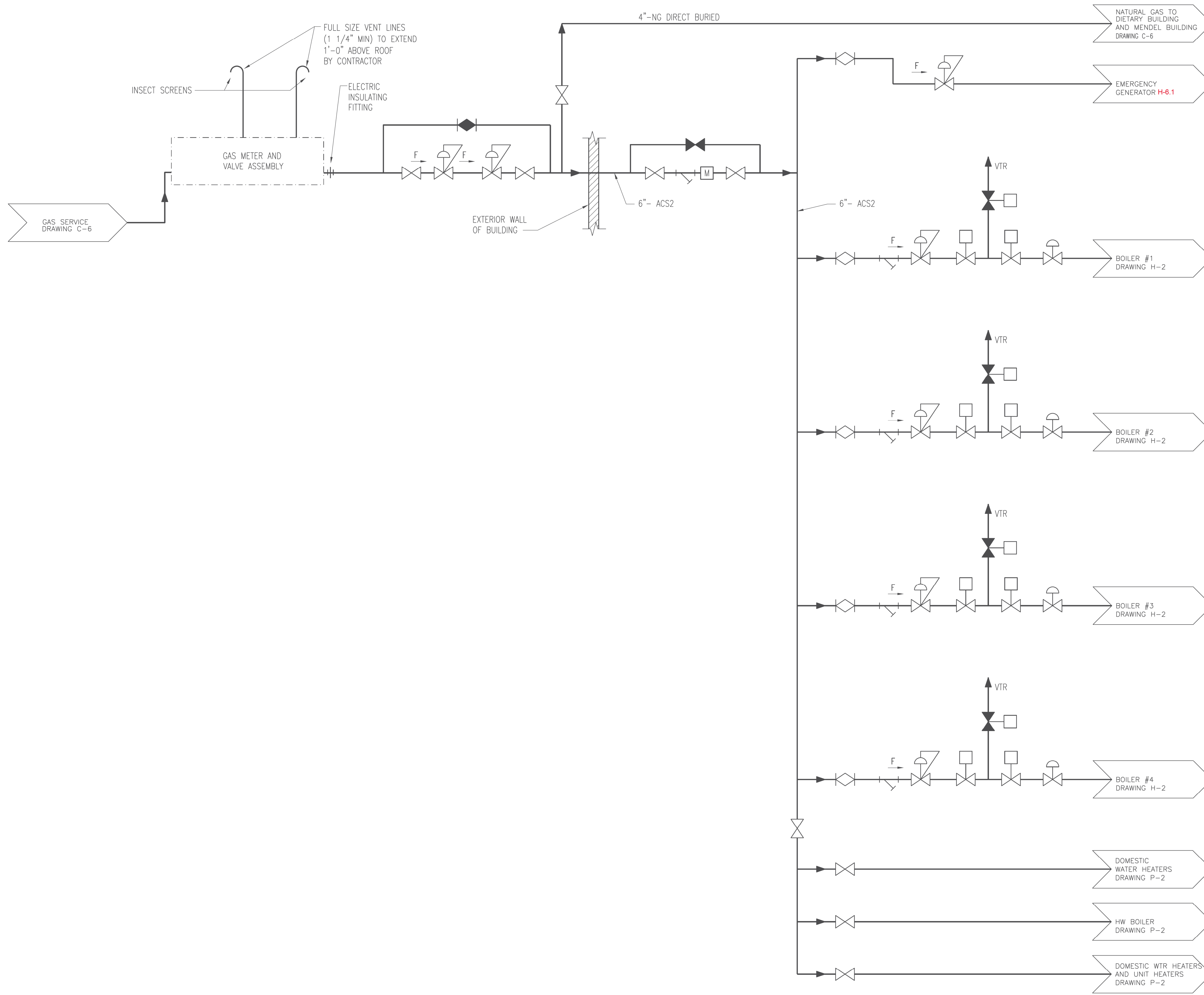


Stanley Consultants INC.
8501 West Higgins Road, Suite 730, Chicago, Illinois 60631-2801
www.stanleyconsultants.com
Illinois Firm Registration No.: 184-001533



State of Illinois
JB PRITZKER, GOVERNOR
Illinois Capital Development Board

MECHANICAL LEGEND		PROJECT NO. 321-055-138
NEW POWER PLANT ELGIN MENTAL HEALTH CENTER 750 SOUTH STATE STREET ELGIN, KANE COUNTY, ILLINOIS		DATE 4/22/2021
		SHEET NO. H-1
		31 OF (51) SHEETS



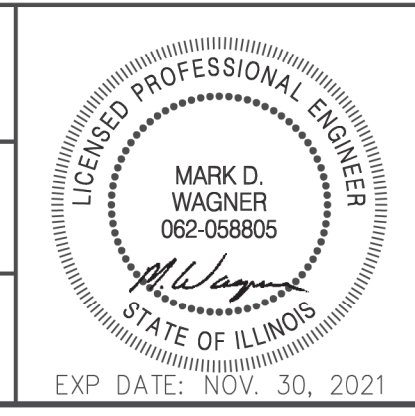
GENERAL NOTES:
 1. SEE PROJECT MANUAL SECTION 231123 FACILITY NATURAL GAS PIPING FOR PIPING, VALVES AND SPECIALTIES SPECIFICATIONS.

NOTE: CONTRACTOR SHALL OBTAIN AND VERIFY ALL DIMENSIONS AND CONDITIONS AT JOB SITE AND BE FULLY RESPONSIBLE FOR SAME.

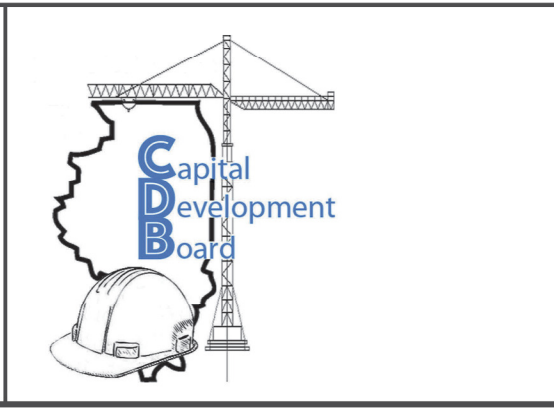
ADDENDUM 01
 09/08/2021

5/5/2021 10:11 AM
 SCI [P] # 29390.01.00 (PW-CDB)

REVISIONS			DRAWN	PREPARED
NO.	DATE	REMARKS	B.K.	---
			TRACED	APPROVED
			---	---
			CHECKED	APPROVED
			M.D.W.	M.D.W.

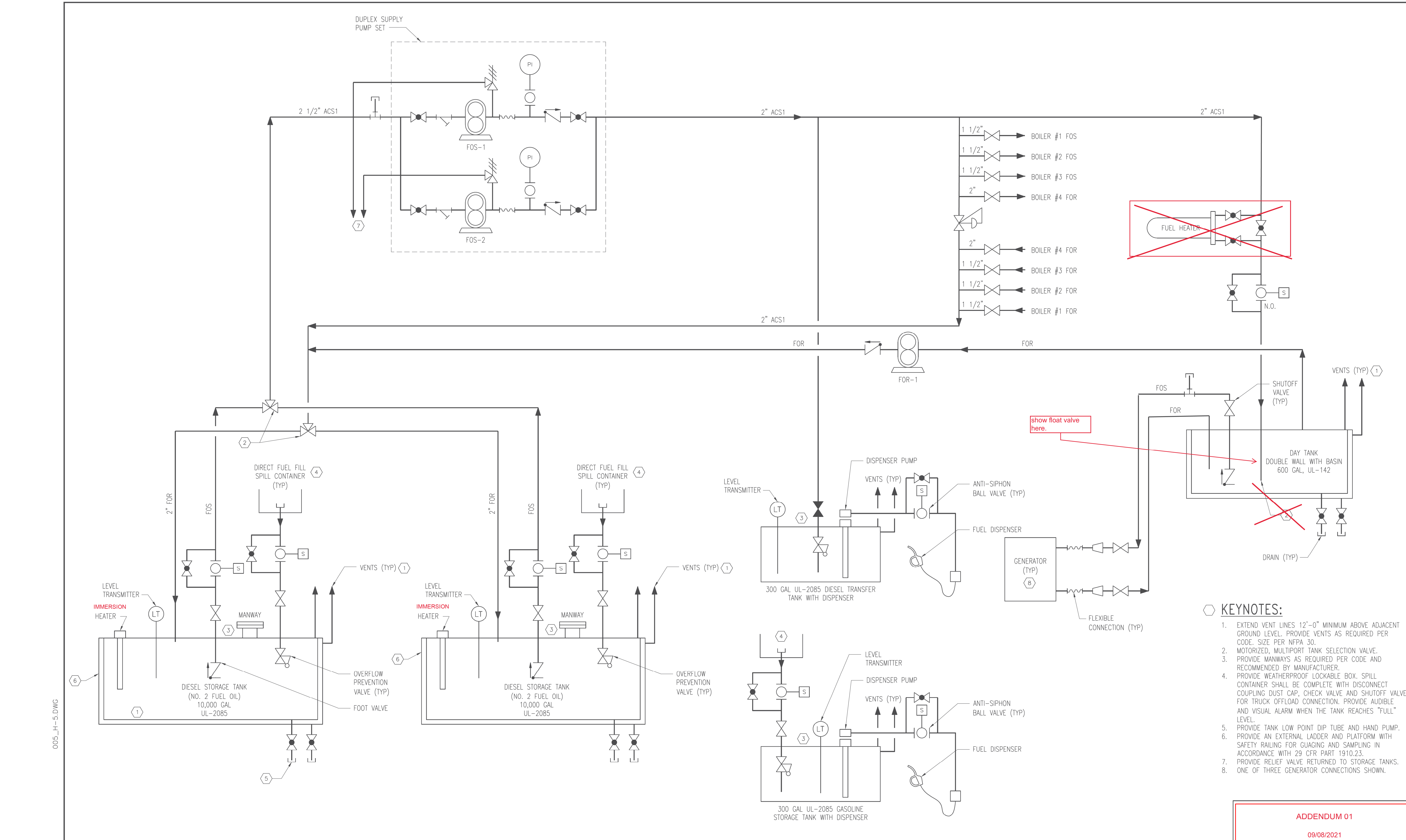



Stanley Consultants INC.
8501 West Higgins Road, Suite 730, Chicago, Illinois 60631-2801
 www.stanleyconsultants.com
 Illinois Firm Registration No.: 184-001533



State of Illinois
JB PRITZKER, GOVERNOR
Illinois Capital Development Board

SCHEMATIC DIAGRAM – NATURAL GAS		PROJECT NO. 321-055-138
NEW POWER PLANT ELGIN MENTAL HEALTH CENTER 750 SOUTH STATE STREET ELGIN, KANE COUNTY, ILLINOIS		DATE 4/22/2021
		SHEET NO. H-4
		34 OF (51) SHEETS



- KEYNOTES:**
1. EXTEND VENT LINES 12'-0" MINIMUM ABOVE ADJACENT GROUND LEVEL. PROVIDE VENTS AS REQUIRED PER CODE. SIZE PER NFPA 30.
 2. MOTORIZED, MULTIPORT TANK SELECTION VALVE.
 3. PROVIDE MANWAYS AS REQUIRED PER CODE AND RECOMMENDED BY MANUFACTURER.
 4. PROVIDE WEATHERPROOF LOCKABLE BOX. SPILL CONTAINER SHALL BE COMPLETE WITH DISCONNECT COUPLING DUST CAP, CHECK VALVE AND SHUTOFF VALVE FOR TRUCK OFFLOAD CONNECTION. PROVIDE AUDIBLE AND VISUAL ALARM WHEN THE TANK REACHES "FULL" LEVEL.
 5. PROVIDE TANK LOW POINT DIP TUBE AND HAND PUMP.
 6. PROVIDE AN EXTERNAL LADDER AND PLATFORM WITH SAFETY RAILING FOR GAUGING AND SAMPLING IN ACCORDANCE WITH 29 CFR PART 1910.23.
 7. PROVIDE RELIEF VALVE RETURNED TO STORAGE TANKS.
 8. ONE OF THREE GENERATOR CONNECTIONS SHOWN.

ADDENDUM 01
09/08/2021

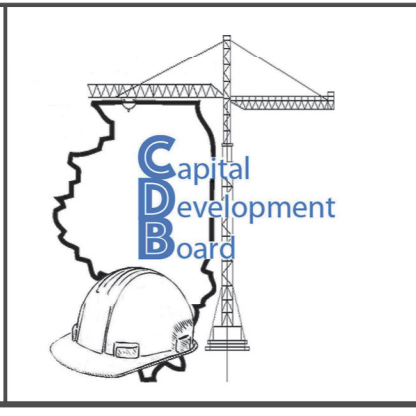
NOTE: CONTRACTOR SHALL OBTAIN AND VERIFY ALL DIMENSIONS AND CONDITIONS AT JOB SITE AND BE FULLY RESPONSIBLE FOR SAME.

REVISIONS		
NO.	DATE	REMARKS

DRAWN B.K.	PREPARED ---
TRACED ---	APPROVED ---
CHECKED M.D.W.	APPROVED M.D.W.



Stanley Consultants INC.
8501 West Higgins Road, Suite 730, Chicago, Illinois 60631-2801
www.stanleyconsultants.com
Illinois Firm Registration No.: 184-001533



State of Illinois
JB PRITZKER, GOVERNOR
Illinois Capital Development Board

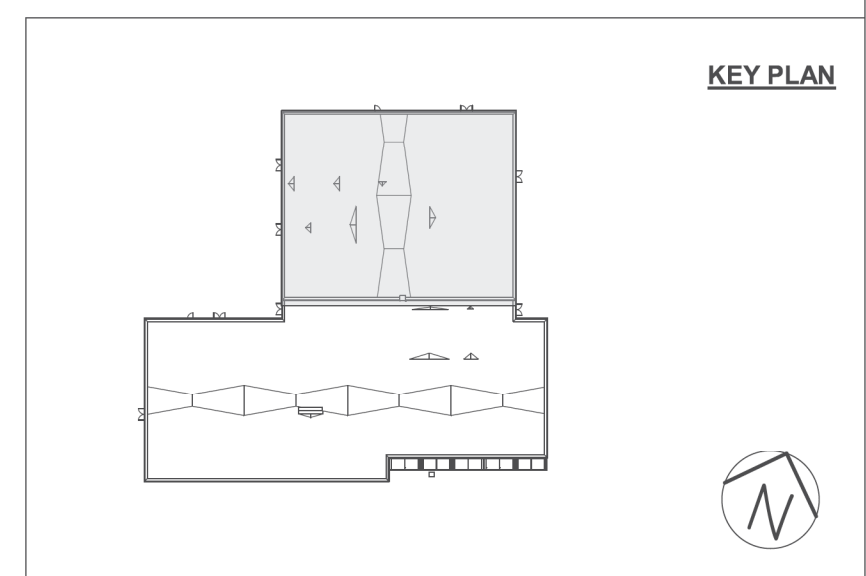
SCHEMATIC DIAGRAM – DIESEL		PROJECT NO. 321-055-138
NEW POWER PLANT ELGIN MENTAL HEALTH CENTER ELGIN, ILLINOIS COOK COUNTY, ILLINOIS		DATE 4/22/2021
		SHEET NO. H-5
		35 OF (51) SHEETS

5/6/2021 9:48 AM
SCI [P] # 29390.01.00 (PW-CDB)

- KEYED NOTES:**
1. REFER TO A-5 ROOF PLAN FOR LOCATION OF ROOF MOUNTED PENTHOUSES.
 2. REFER TO A-5 ROOF PLAN FOR LOCATION OF RTU.
 3. REFER TO A-5 FLOOR PLAN FOR LOCATION OF ROOF MOUNTED EXHAUST FAN.
- GENERAL NOTES:**
1. DESIGN-BUILD CONTRACTOR TO DESIGN AND PROVIDE DUCTWORK TO MEET THE PERFORMANCE SPECIFIED IN THE BASIS OF DESIGN.



1 PARTIAL VENTILATION PLAN
1/8" = 1'-0"



ADDENDUM 01
09/08/2021

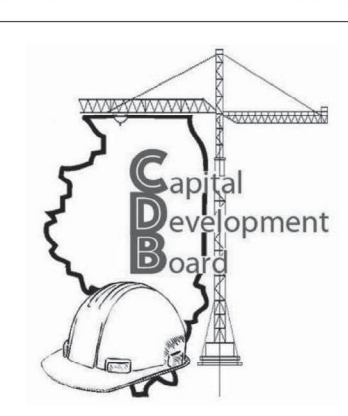
NOTE: CONTRACTOR SHALL OBTAIN AND VERIFY ALL DIMENSIONS AND CONDITIONS AT JOB SITE AND BE FULLY RESPONSIBLE FOR SAME.

REVISIONS		
NO.	DATE	REMARKS

DRAWN	PREPARED
L.J.A.	---
TRACED	APPROVED
---	---
CHECKED	APPROVED
M.D.W.	M.D.W.



Stanley Consultants INC.
8501 West Higgins Road, Suite 730, Chicago, Illinois 60631-2801
www.stanleyconsultants.com
Illinois Firm Registration No.: 184-001533



State of Illinois
JB PRITZKER, GOVERNOR
Illinois Capital Development Board

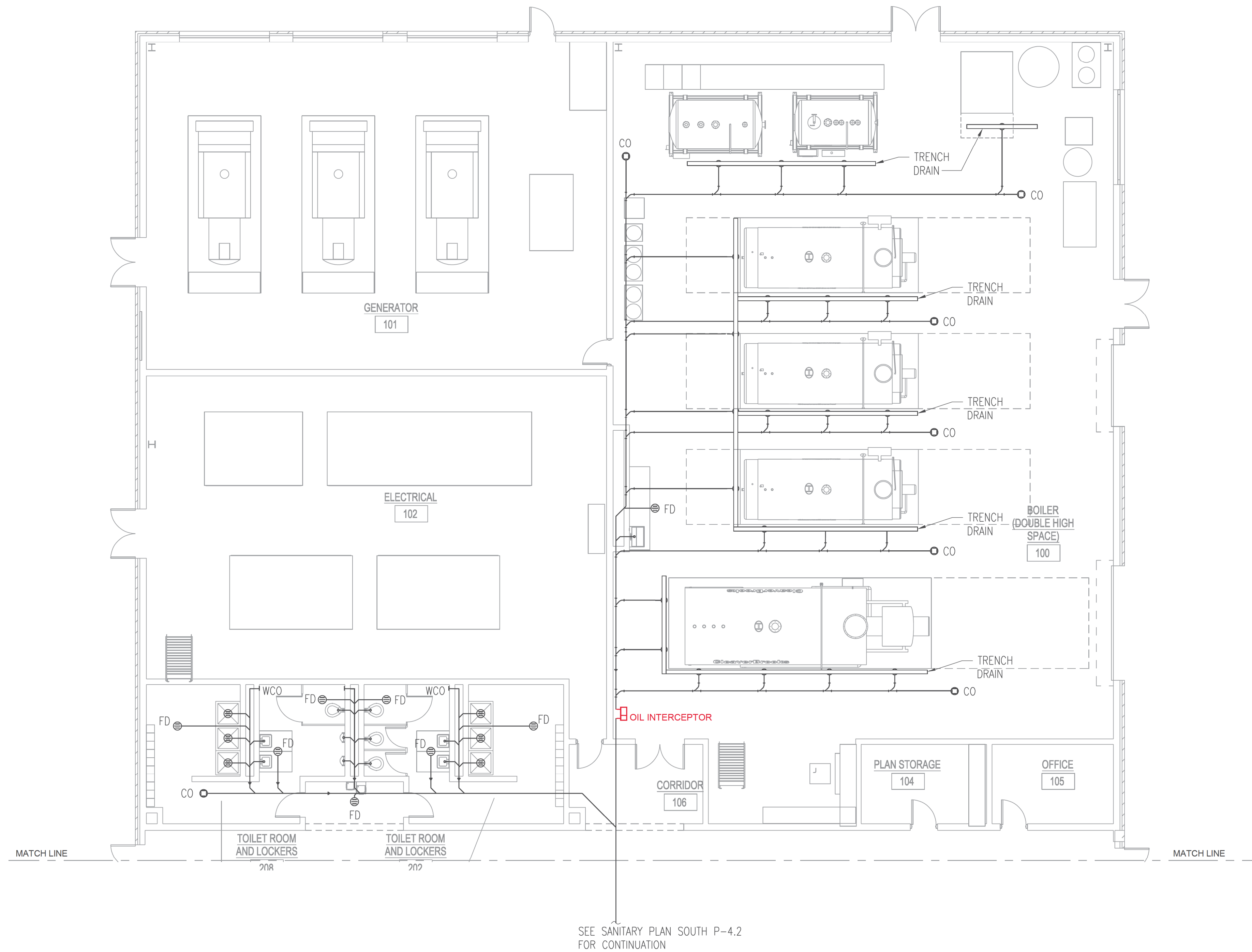
VENTILATION PLAN – FIRST FLOOR NORTH
NEW POWER PLANT
ELGIN MENTAL HEALTH CENTER
750 SOUTH STATE STREET
ELGIN, KANE COUNTY, ILLINOIS

PROJECT NO.
321-055-138
DATE
4/22/2021
SHEET NO.
V-2.1
40 OF 51 SHEETS

4/22/2021 8:22:52 AM C:\REVIT_2020_PROJECT_FILES\ELGN_MHC_MEP_L\ANDERSON-5960.rvt

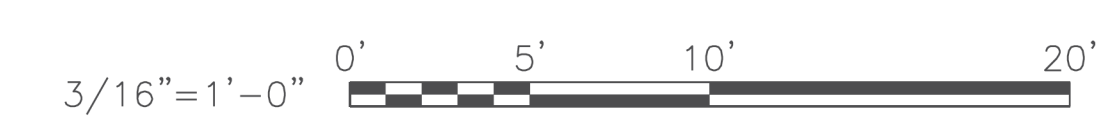
NOTES:

1. SANITARY VENTS AND CLEANOUTS TO BE PROVIDED BY DESIGN-BUILD CONTRACTOR.



SEE SANITARY PLAN SOUTH P-4.2 FOR CONTINUATION

SANITARY PLAN
SCALE: 3/16"=1'-0"



ADDENDUM 01
09/08/2021

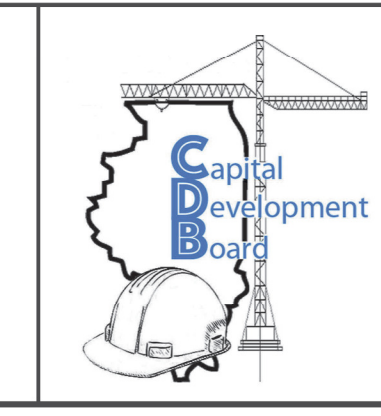
NOTE: CONTRACTOR SHALL OBTAIN AND VERIFY ALL DIMENSIONS AND CONDITIONS AT JOB SITE AND BE FULLY RESPONSIBLE FOR SAME.

REVISIONS		
NO.	DATE	REMARKS

DRAWN B.K.	PREPARED ---
TRACED ---	APPROVED ---
CHECKED M.D.W.	APPROVED M.D.W.



Stanley Consultants INC.
8501 West Higgins Road, Suite 730, Chicago, Illinois 60631-2801
www.stanleyconsultants.com
Illinois Firm Registration No.: 184-001533



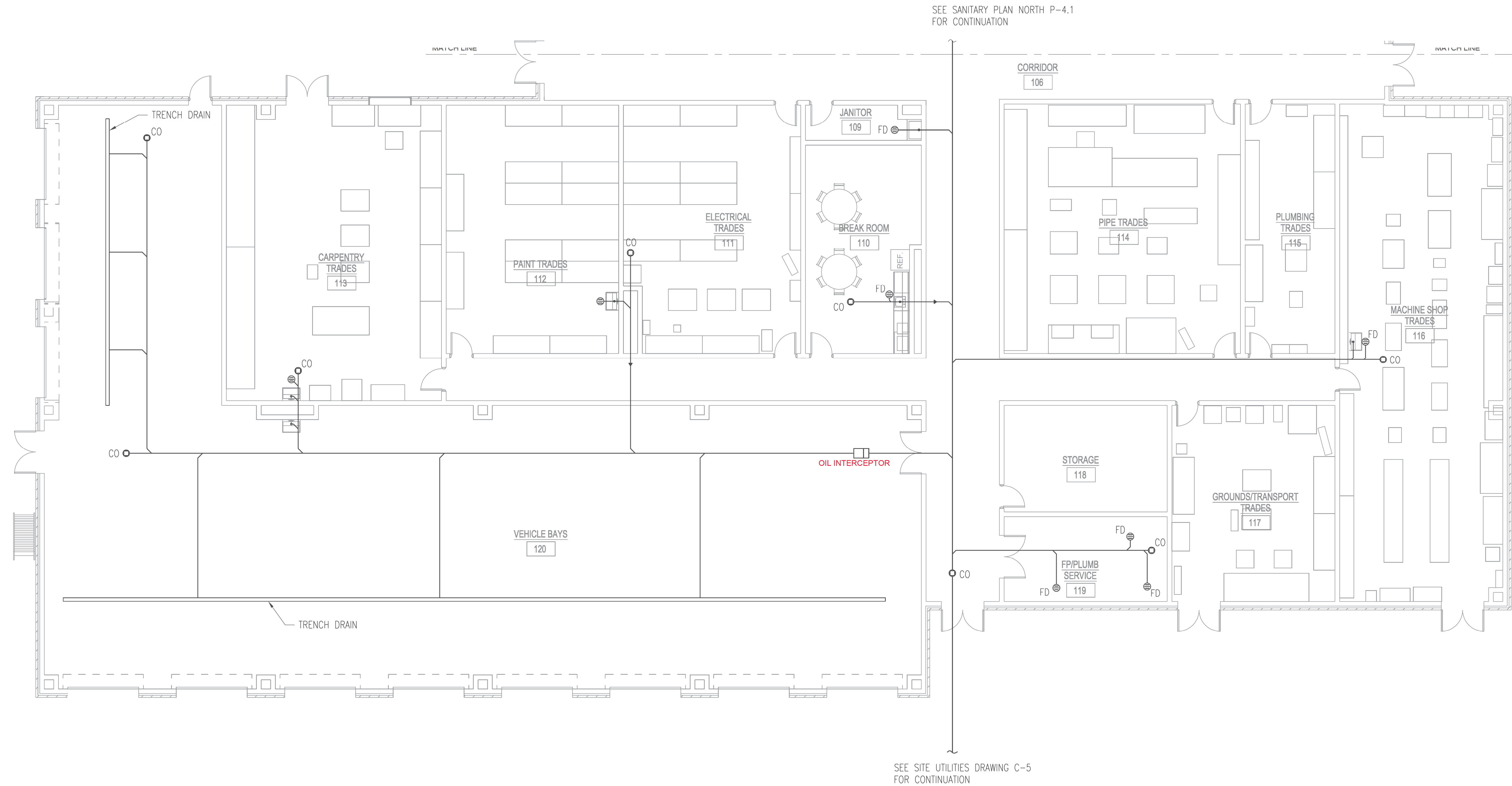
State of Illinois
JB PRITZKER, GOVERNOR
Illinois Capital Development Board

SANITARY PLAN NORTH
NEW POWER PLANT
ELGIN MENTAL HEALTH CENTER
750 SOUTH STATE STREET
ELGIN, KANE COUNTY, ILLINOIS

PROJECT NO.
321-055-138
DATE
4/22/2021
SHEET NO.
P-4.1
47 OF (51) SHEETS

5/3/2021 9:02 PM SCI P1 # 29390.01.00 (PW-CDB) 47_P-4.1.DWG

- NOTES:**
- SANITARY VENTS AND CLEANOUTS TO BE PROVIDED BY DESIGN-BUILD CONTRACTOR.



SANITARY PLAN
 SCALE: 1/8"=1'-0"
 NORTH



ADDENDUM 01
 09/08/2021

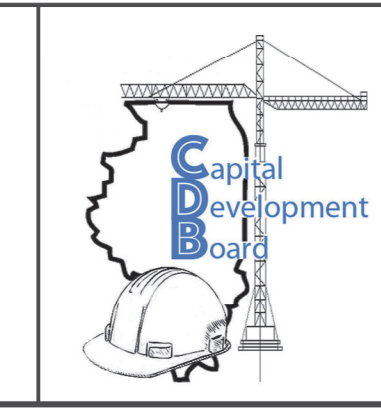
NOTE: CONTRACTOR SHALL OBTAIN AND VERIFY ALL DIMENSIONS AND CONDITIONS AT JOB SITE AND BE FULLY RESPONSIBLE FOR SAME.

REVISIONS		
NO.	DATE	REMARKS

DRAWN B.K.	PREPARED ---
TRACED ---	APPROVED ---
CHECKED M.D.W.	APPROVED M.D.W.



Stanley Consultants INC.
 8501 West Higgins Road, Suite 730, Chicago, Illinois 60631-2801
 www.stanleyconsultants.com
 Illinois Firm Registration No.: 184-001533



State of Illinois
JB PRITZKER, GOVERNOR
 Illinois Capital Development Board

SANITARY PLAN SOUTH
 NEW POWER PLANT
 ELGIN MENTAL HEALTH CENTER
 750 SOUTH STATE STREET
 ELGIN, KANE COUNTY, ILLINOIS

PROJECT NO.
321-055-138
 DATE
4/22/2021
 SHEET NO.
P-4.2
 48 OF (51) SHEETS

5/6/2021 10:14 AM
 SCI [P] # 29390.01.00 (PW-CDB)
 48_P-4.2.DWG