

NO.	CONDUCTORS PER CONDUIT	GROUND CONDUCTOR	CONDUIT SIZE	NO. OF CONDUITS
1	4-#800 KMHIL	1/0	3 1/2"	3
2	4-#500 KMHIL	1/0	3 1/2"	3
3	4-#2	#8	1 1/4"	1
4	4-#4/0	#2	2 1/2"	1
5	4-#1/0	#4	2"	1
6	4-#3/0	#4	2 1/2"	1
7	3-#350 KMHIL	1/0	3 1/2"	1
8	4-#500 KMHIL	1/0	3 1/2"	1
9	3-#500 KMHIL	1/0	3 1/2"	1
10	4-#500 KMHIL	1/0	3 1/2"	1
11	4-#750 KMHIL	2/0	4"	1
12	3-#4	#2	2 1/2"	1
13	4-#2/0	#6	2"	1
14	4-#500 KMHIL	1/0	3 1/2"	2
15	4-#500 KMHIL	1/0	4"	2
16	4-#500 KMHIL	1/0	3 1/2"	4
17	3-#500 KMHIL	1/0	3 1/2"	2
18	6-#12	#12	3/4"	1
19	3-#12	#12	3/4"	1
20	3-#10	#10	3/4"	1

ITEM NO.	KVA	VOL. TAP	PHASE	WIRE	LOCATION	REMARKS
T-2	225	480	120/208	3	A149	FLOOR MOUNTED
T-3	225	480	120/208	3	B102	FLOOR MOUNTED
T-4	400	480	120/208	3	D116	FLOOR MOUNTED
T-5	400	480	120/208	3	1116	FLOOR MOUNTED

1 NORMAL POWER RISER DIAGRAM
NO. SCALE

REVISIONS

NO.	DATE	REMARKS	DRAWN	PREPARED	SEAL
1		TRACED	APPROVED		
2		CHECKED	APPROVED		

BRUCE W. BARTLING
LICENSED PROFESSIONAL ENGINEER
STATE OF ILLINOIS
NO. 031-011-011

PHILLIPS SWAGER ASSOCIATES
3602 N. KNOXVILLE
PEORIA, ILLINOIS 61603
(309) 686-9511

ARCHITECTURAL, STRUCTURAL, ELECTRICAL,
PLUMBING/FIRE PROTECTION,
SECURITY ENGINEERING

ARCHITECT:
BURNING CASSELL ASSOCIATES
2425 ROYAL BOULEVARD
ELGIN, ILLINOIS 60123
(708) 995-5840

STATE OF ILLINOIS
CAPITAL DEVELOPMENT BOARD

NEW FORENSIC TREATMENT COMPLEX
ELGIN, ILLINOIS 60123

PROJECT NO. 321-055-102
DATE DEC. 26, 1995
SHEET NO. E4-1
OF SHEETS

NO.	DATE	REVISIONS

NO.	DATE	REVISIONS

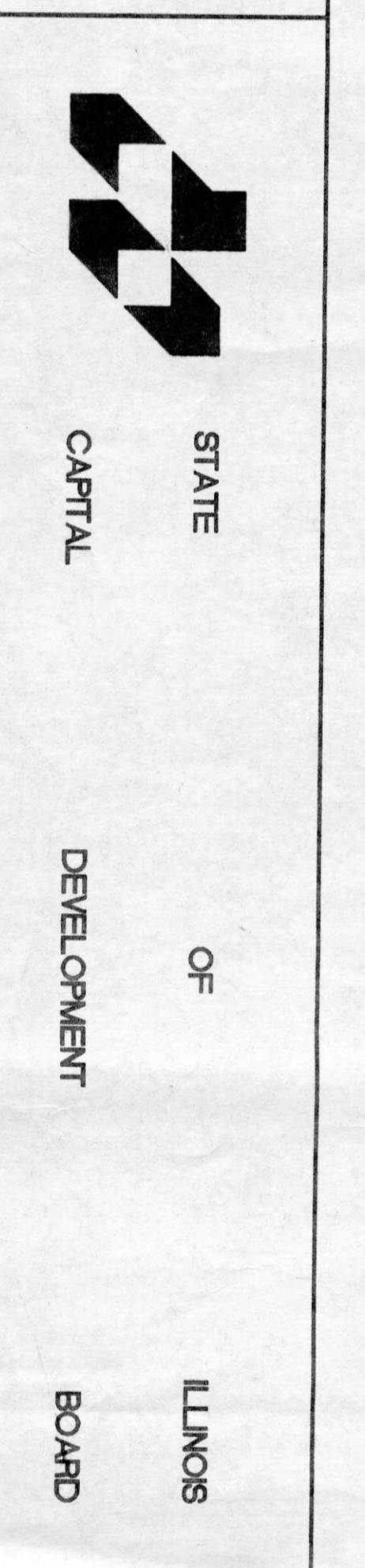
REVISIONS

APPROVED

APPROVED

APPROVED

ROBERT G. BURKHARDT & ASSOC., INC.
CONSULTING ENGINEERS
 59 EAST VAN BUREN ST., SUITE 2300
 CHICAGO, ILLINOIS 60605
 (312) 341-9292 FAX: (312) 341-9263



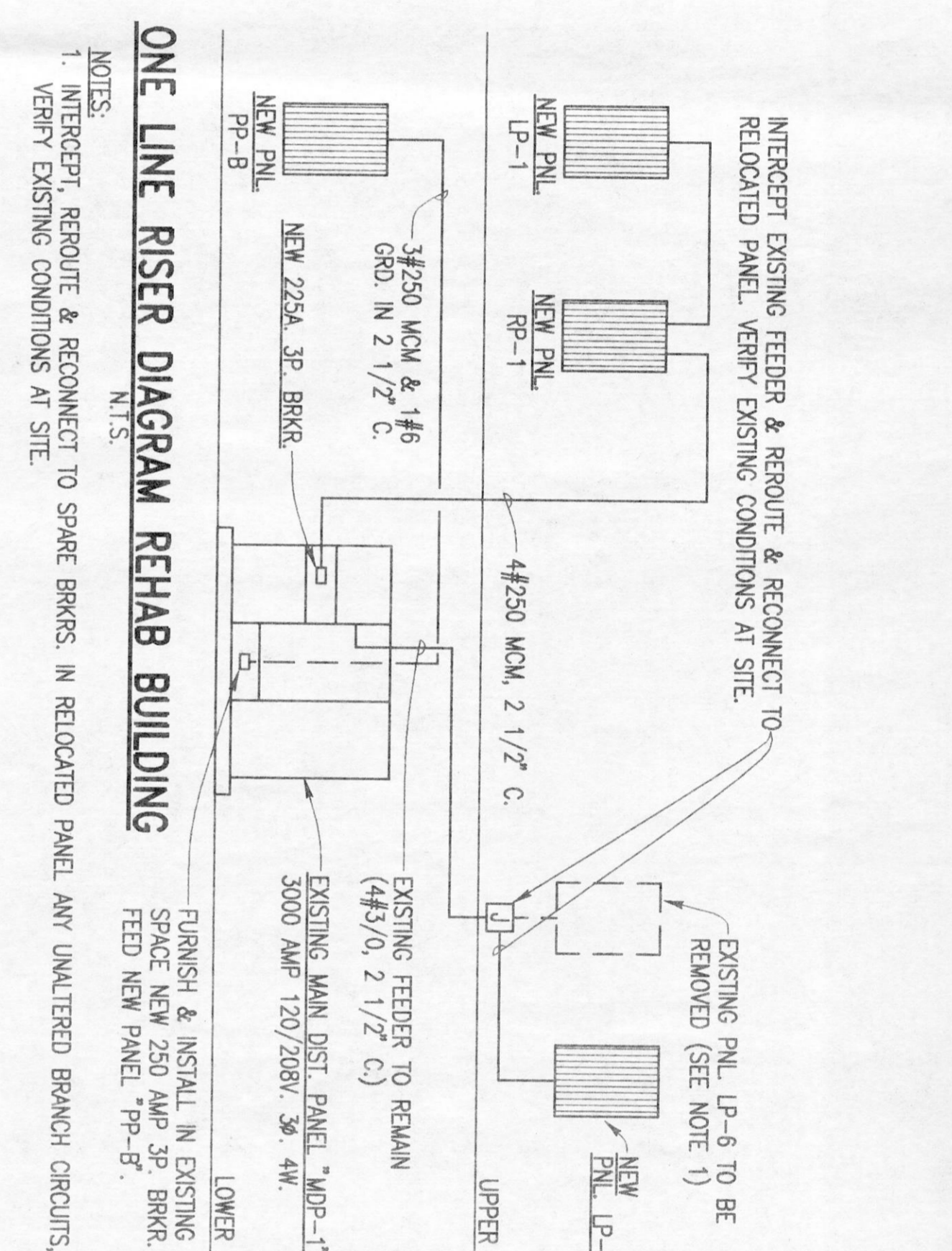
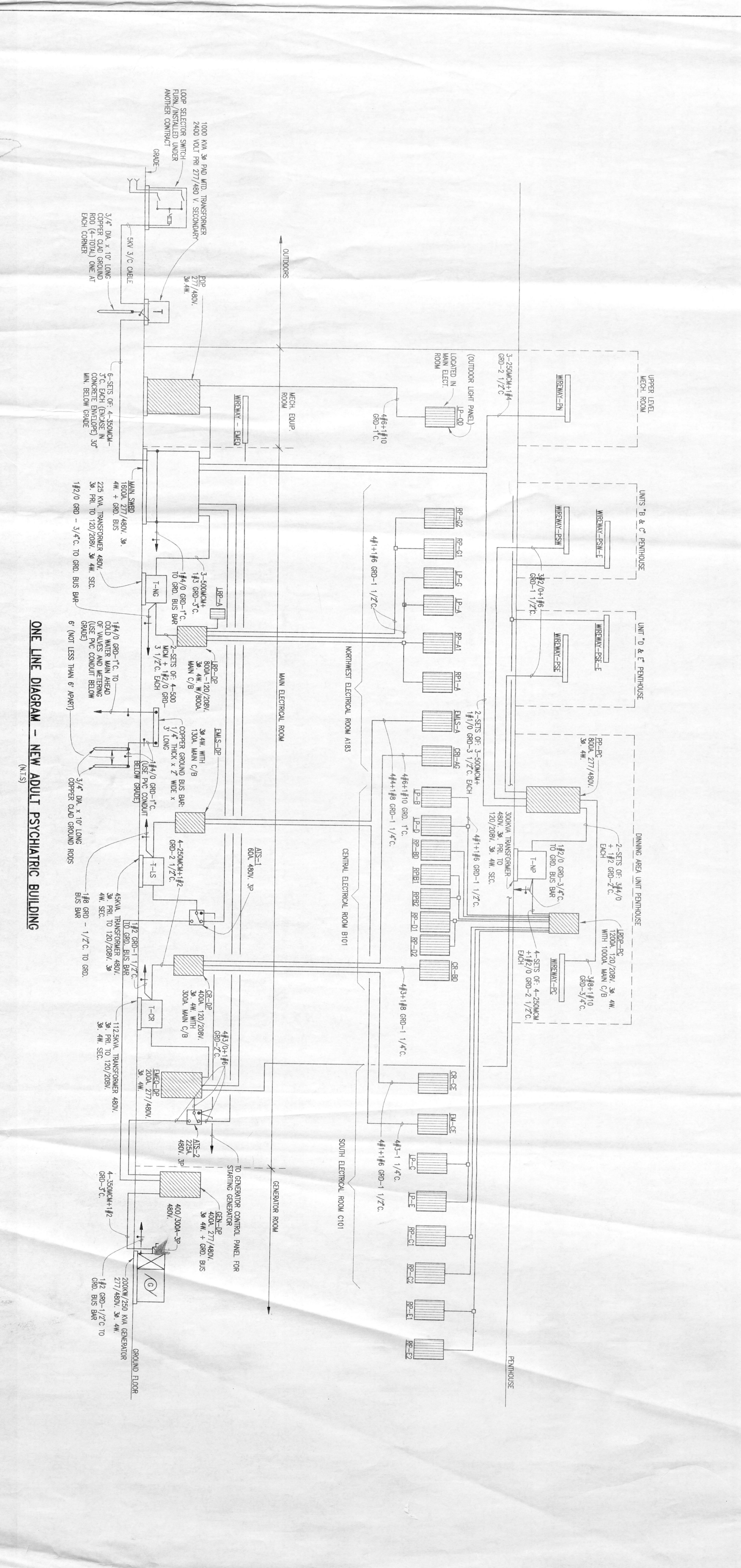
STATE OF ILLINOIS
 CAPITAL DEVELOPMENT BOARD

PROJECT NO. _____

DATE: SEPTEMBER 19, 1984

SHEET: E-27

SHEETS: _____



ONE LINE RISER DIAGRAM REHAB BUILDING
 N.T.S.

NOTES:
 1. INTERCEPT, REMOVE & RECONNECT TO SPARE BRKBS. IN RELOCATED PANEL. ANY UNALTERED BRANCH CIRCUITS, VERIFY EXISTING CONDITIONS AT SITE.

ONE LINE DIAGRAM - NEW ADULT PSYCHIATRIC BUILDING
 (N.T.S.)

ONE LINE DIAGRAMS
 ELGIN MENTAL HEALTH CENTER
 NEW ADULT PSYCHIATRIC BUILDING