

SPACE NEEDS INVENTORY DOMICILIARY

PERKINS EASTMAN
209 S LASALLE STREET, SUITE 400
CHICAGO, IL 60604

Space Needs Inventory | Domiciliary

General Notes

1. Color temperature of light fixtures to be 3000k throughout all resident spaces unless otherwise noted. While electrical lighting design shall be per electrical narrative and drawings, the comments related to the lighting in this document provide the general design intent that may guide the final lighting design, in case of conflicts.
2. Assume installation of acoustic underlayment at all unit floor materials.
3. Assume solid surface window sills at punched openings.
4. All public restrooms to have touchless sensor faucets with .5 GPM and low-flow toilets with 1.1 GPF. All fixtures to meet EPA WaterSense. Aerators on faucets are PROHIBITED. Flow restrictors to be installed at the base of the lavatory sink or sink faucet.
5. All resident unit bathrooms to have faucets with .5 GPM and low-flow toilets with 1.1 GPF. All fixtures to meet EPA WaterSense. Aerators on faucets are PROHIBITED. Flow restrictors to be installed at the base of the lavatory sink or sink faucet.
6. For all spaces, the following is achieved:

Background noise levels do not exceed the thresholds below:

Sound Pressure Level (SPL)		Open Workspaces, Dining Areas	Enclosed Offices, Residential Living & Sleeping Areas (Daytime)	Conference Rooms, Classrooms, Residential Sleeping Areas (Nighttime)
Average SPL (L _{eq})	dBA	45	40	35
	dBC	70	65	60
Max SPL (L _{Max})	dBA	55	50	45
	dBC	80	75	70
Average SPL (L _{eq})	dBA	50	45	40
	dBC	75	70	65
Max SPL (L _{Max})	dBA	60	55	50
	dBC	85	80	75
Average SPL (L _{eq})	dBA	55	50	45
	dBC	80	75	70

Space Needs Inventory | Domiciliary

For all spaces except dwelling units, the following is achieved:

Spaces meet the maximum $RT_{(60)}$ thresholds in the table below:

Room Type	Size	$RT_{(60)}$ (seconds)
Conference rooms	Refer to the Narrative	< 0.6
Classrooms	< 280 m ³ [10,000 ft ³]	< 0.6
	Between 280 m ³ [10,000 ft ³] and 570m ³ [20,000 ft ³]	0.5 to 0.8
	> 570 m ³ [20,000 ft ³]	0.6 to 1.0
Lecture halls	< 280 m ³ [10,000 ft ³]	< 0.7
	Between 280 m ³ [10,000 ft ³] and 570m ³ [20,000 ft ³]	0.6 to 0.9
	> 570 m ³ [20,000 ft ³]	0.7 to 1.3
Music rehearsal spaces	< 280 m ³ [10,000 ft ³]	< 1.1
	Between 280 m ³ [10,000 ft ³] and 570m ³ [20,000 ft ³]	1.0 to 1.4
Fitness facilities	< 280 m ³ [10,000 ft ³]	0.7 to 0.8
	Between 280 m ³ [10,000 ft ³] and 570m ³ [20,000 ft ³]	0.8 to 1.1
	> 570 m ³ [20,000 ft ³]	1.0 to 1.8

7. For all typical outlet and switch locations, reference applicable codes and electrical drawings. For specialty outlet and power / data requirements, also reference the following Space Needs document.

8. For additional information on performance qualities, reference the specifications project manual for CPT (carpet), LVT (luxury vinyl tile), WC2 (Type II wallcovering, VWC3 (Type 3 wall protection), and P (paint).

9. Full height recessed corner guards assumed at all corridor and Commons spaces outside corners including 90 degree and odd angle corners. Surface mount corner guards assumed at all locations with a handrail / lean rail.

Space Needs Inventory | Domiciliary

Commons

Room/Space Name: Entry 130, 160

Square Foot Area: 184 (per space)

Function: Transient space for residents and guests

Furniture, Fixtures, Equipment:

(1) Bench (@ 130 only)

Architectural Finishes

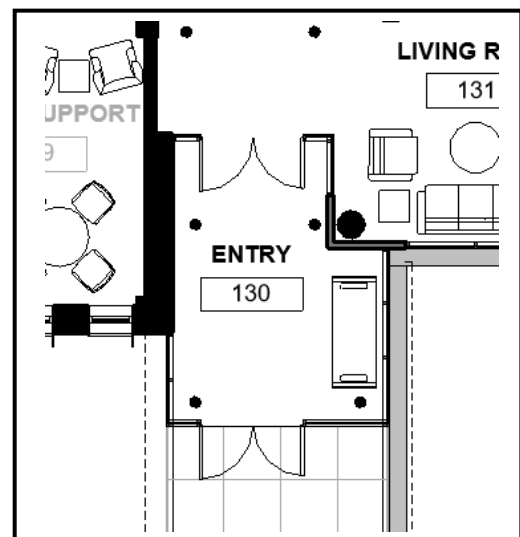
Floors: walk-off grate system	Casework:
Walls: P (paint), wall base rubber millwork profile, 6"	Lighting: recessed LED down lights @ 1 per 65sf
Ceiling: P (paint), wood veneer plank ceiling with integrated acoustic batting and custom stain finish	Special Criteria:

Electrical:

Refer to Electrical Drawings

Communication / Technology Requirements:

Wireless access points



Room Layout Diagram

Space Needs Inventory | Domiciliary

Commons

Room/Space Name: Elevator Lobby and Central Corridor 150

Square Foot Area: inclusive in Corridors

Function: Transient space for residents and guests

Furniture, Fixtures, Equipment:

(2) lounge chairs, (1) coffee table

Architectural Finishes

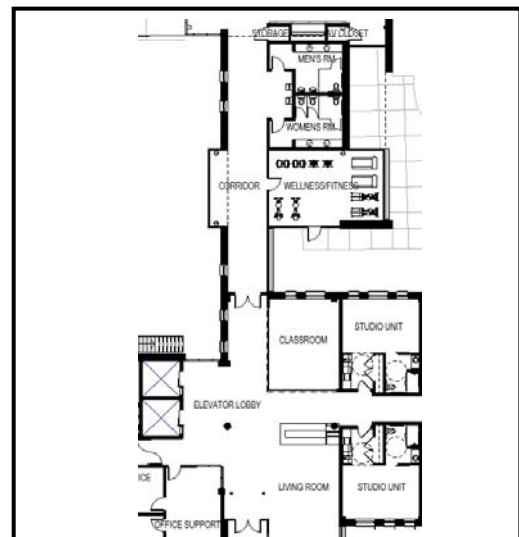
Floors: large format porcelain tile, size varies from 12"x24" to 48"x48" with: minimum 4% recycled content, Green Squared Certified manufacturing process, US sourced materials, installed in decorative pattern	Casework:
Walls: P (paint), wall base rubber millwork profile, 6"	Lighting: recessed LED down lights @ 1 per 65sf
Ceiling: P (paint), drywall w/soffits, wood veneer plank ceiling with integrated acoustic batting and custom stain finish	Special Criteria:

Electrical:

Refer to Electrical Drawings

Communication / Technology Requirements:

Wireless access points



Room Layout Diagram

Space Needs Inventory | Domiciliary

Commons

Room/Space Name: Living Room 131

Square Foot Area: 442

Function: Space for residents and guests to sit and socialize

Furniture, Fixtures, Equipment:

(4) Wing back chairs around (1) upholstered ottoman with (2) side tables; (1) sofa with (2) lounge chairs, (1) coffee table, and (2) side tables; (1) gas fireplace; decorative drapery; and motorized roller shades

Architectural Finishes

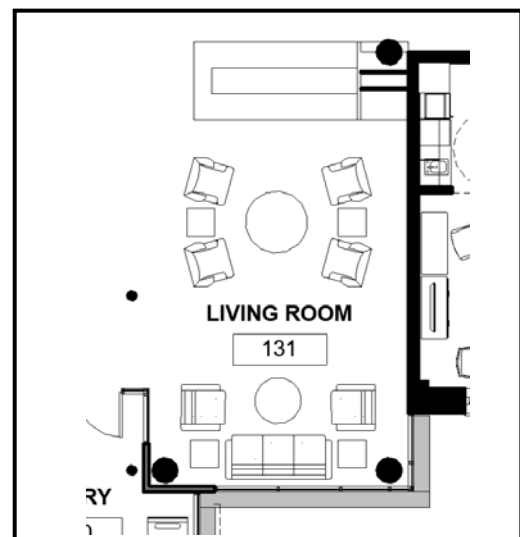
Floors: CPT (carpet)	Casework: laminated wood veneer display shelving at fireplace wall
Walls: P (paint), decorative tile or engineered stone fireplace surround, wood mantel, wall base rubber millwork profile, 6"	Lighting: recessed LED down lights @ 1 per 65sf, decorative pendants
Ceiling: P (paint), drywall w/soffits	Special Criteria: additional blocking in fireplace wall to account for large artwork and at windows for drapery and roller shades

Electrical:

Refer to Electrical Drawing

Communication / Technology Requirements:

Wireless access points



Room Layout Diagram

Space Needs Inventory | Domiciliary

Commons

Room/Space Name: Classroom 138

Square Foot Area: 369

Function: Space for residents to hold activities, arts and crafts, and lifelong learning sessions

Furniture, Fixtures, Equipment:

(6) 72" x 24" Flip top tables with power grommets, (12) stackable poly arm chairs; manual blackout roller shades

Architectural Finishes

Floors: wood look LVT (luxury vinyl tile) plank 10" x 40" with: ashlar installation method;	Casework: laminated wood veneer lockable base and upper cabinetry with (1) row of drawers (with heavy duty glides), melamine interiors, and adjustable shelving; recycled glass quartz countertop and backsplash with: 75% recycled content by weight, materials free of petrochemical and plastic resins, made in the USA, and scratch and UV-resistant
Walls: P (paint), (1) wall to be writeable dry-erase paint w/ magnetic primer, wall base rubber millwork profile, 6"	Lighting: recessed direct/indirect LED 2X4s
Ceiling: P (paint), drywall, ACT with: minimum .85 NRC and 35 CAC; free of Red List chemicals per Living Building Challenge 3.0; and 75% recycled content	Special Criteria: Telescoping glass walls

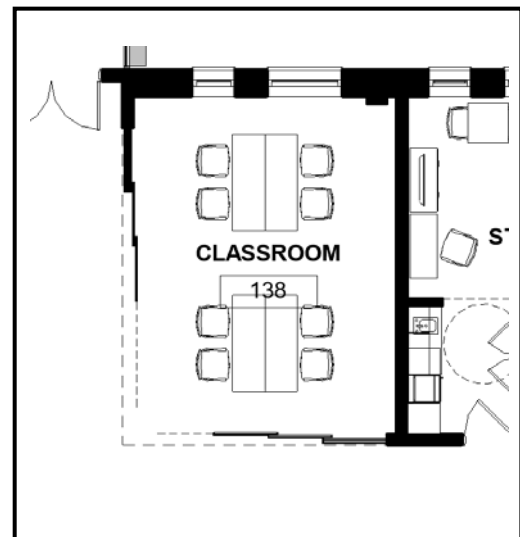
Electrical:

Refer to Electrical Drawing

Communication / Technology Requirements:

Wireless access points

Ceiling mounted projector and screen



Room Layout Diagram

Space Needs Inventory | Domiciliary

Resident Units

Room/Space Name: Studio Unit (TYP)

Square Foot Area: 386

Function: Personal space for residents

Furniture, Fixtures, Equipment:

Full size bed, nightstand, lounge chair, 30"x30" square table, (3) arm chairs, bureau, desk, table lamp, bedding, shower curtain and liner, manual roller shades, TV, micro fridge; (2) outdoor lounge chairs and (1) table @ ground units only

Architectural Finishes

Living Area Floors: wood look LVT (luxury vinyl tile) plank 10" x 40" with: ashlar installation method; Bathroom Floors: porcelain tile, size 2"x2": minimum 4% recycled content, Green Squared Certified manufacturing process, US sourced materials	Casework: prefabricated residential base and upper cabinetry with (1) row of drawers (with heavy duty glides), and adjustable shelving; recycled solid surface countertop and backsplash @ Kitchen and solid surface countertop, backsplash, and integral bowl @ bathroom with: minimum 40% recycled content and SCS 3 rd Party Certification; removeable base cabinets for accessibility @ bathrooms
Walls: P (paint), wall base rubber millwork profile, 4"; coordinating porcelain tile cove wall base (@ bathroom only)	Lighting: recessed LED down lights @ 1 per 65sf, under cabinet LED strip lighting @ Kitchen, decorative vanity LED light @ Bathroom, surface mounted decorative LED decorative @ Bedroom
Ceiling: P (paint), drywall	Special Criteria: zero threshold shower w/ full tile enclosure and tile ledge for toiletries

Accessories:

(1) robe hook, (1) hand towel hook, (1) 24" towel bar, (1) toilet paper holder, white grab bars, mirror, medicine cabinet with mirror, shower curtain rod, closet rod

Electrical:

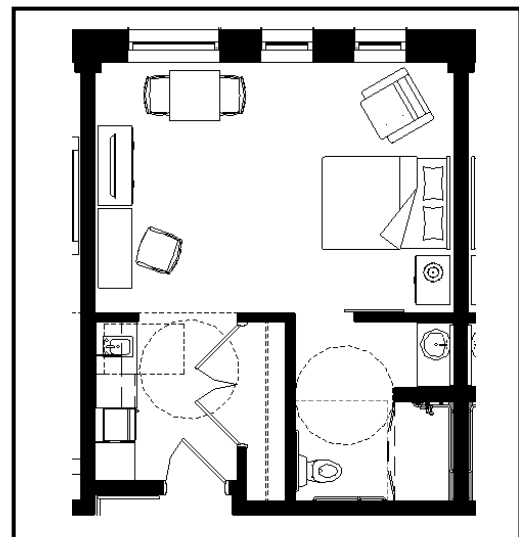
USB port @ bedside table outlets and desk outlet
Dimming controls

Plumbing:

Kitchen faucet with pull-out spray, satin nickel finish
Bathroom faucet, satin nickel finish
Trench drain along back shower wall, satin nickel finish

Communication / Technology Requirements:

Wireless access points



Room Layout Diagram

Space Needs Inventory | Domiciliary

Resident Units

Room/Space Name: 1 Bedroom Unit (TYP)

Square Foot Area: 564

Function: Personal space for residents

Furniture, Fixtures, Equipment:

Full size bed, (2) nightstands, (2) lounge chair, 30"x30" square table, (3) arm chair, bureau, desk, media cabinet, coffee table, love seat, side table, table lamp, bedding, shower curtain and liner, manual roller shades, TV, micro fridge; (2) outdoor lounge chairs and (1) table @ ground units only

Architectural Finishes

Living Area Floors: wood look LVT (luxury vinyl tile) plank 10" x 40" with: ashlar installation method Bathroom Floors: porcelain tile, size 2"x2" with: minimum 4% recycled content, Green Squared Certified manufacturing process, US sourced materials	Casework: prefabricated residential base and upper cabinetry with (1) row of drawers (with heavy duty glides), and adjustable shelving; recycled solid surface countertop and backsplash @ Kitchen and solid surface countertop, backsplash, and integral bowl @ bathroom with: minimum 40% recycled content and SCS 3 rd Party Certification; removeable base cabinets for accessibility @ bathrooms
Walls: P (paint), wall base rubber millwork profile, 4"; coordinating porcelain tile cove wall base (@ bathroom only)	Lighting: recessed LED down lights @ 1 per 65sf, under cabinet LED strip lighting @ Kitchen, decorative vanity LED light @ Bathroom, surface mounted LED decorative @ Bedroom / LR
Ceiling: P (paint), drywall	Special Criteria: zero threshold shower w/ full tile enclosure and tile ledge for toiletries

Accessories:

(1) robe hook, (1) hand towel hook, (1) 24" towel bar, (1) toilet paper holder, white grab bars, mirror, medicine cabinet with mirror, shower curtain rod, closet rod

Electrical:

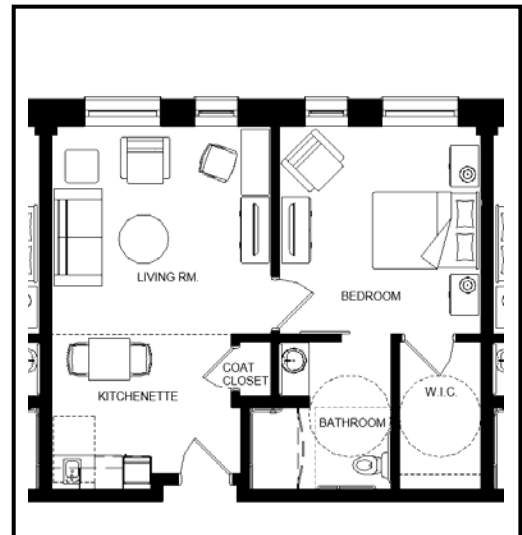
USB port @ bedside table outlets and desk outlet
Dimming controls

Plumbing:

Kitchen faucet with pull-out spray, satin nickel finish
Bathroom faucet, satin nickel finish
Trench drain along back shower wall, satin nickel finish

Communication / Technology Requirements:

Wireless access points



Room Layout Diagram

Space Needs Inventory | Domiciliary

Resident Corridors

Room/Space Name: Corridors 036, 132, 142, 230, 236, 240, 331, 337

Square Foot Area: 3000 (per space)

Function: Transient space for residents and guests

Furniture, Fixtures, Equipment:

Refer to drawings

Architectural Finishes

Floors: CPT (carpet)	Casework: laminated wood veneer window seat assume quantity (2) per wing; paint grade wood lean rail
Walls: impact-resistant type 3 wall protection with: an easily cleanable finish, low emitting materials (passes CAL 01350), free of formaldehyde, heavy metals, solvents, conflict minerals, and phthalates, and manufactured in the USA; installed from top of wall base to underside of lean rail; PVC-free corner guards installed from top of wall base to underside of lean rail; zero-VOC paint above lean rail; wall base rubber millwork profile, 6"	Lighting: recessed LED down lights @ 1 per 65sf, surface mounted LED decorative @ – assume (1) decorative per every (2) down light; LED decorative sconces @ each resident entry w/ integral signage
Ceiling: ACT with: minimum .85 NRC and 35 CAC; free of Red List chemicals per Living Building Challenge 3.0; and 75% recycled content; P (paint), drywall	Special Criteria:

Electrical:

Refer to Electrical Drawing

Communication / Technology Requirements:

Wireless access points



Room Layout Diagram

Space Needs Inventory | Domiciliary

Commons

Room/Space Name: Dens 133, 145, 231, 239, 332, 340

Square Foot Area: 110 (per space)

Function: Lounge space for residents and guests

Furniture, Fixtures, Equipment:

(2) lounge chairs and (1) side table, (1) media cabinet, (1) table lamp, manual roller shades, decorative drapery, TV (quantities are per space)

Architectural Finishes

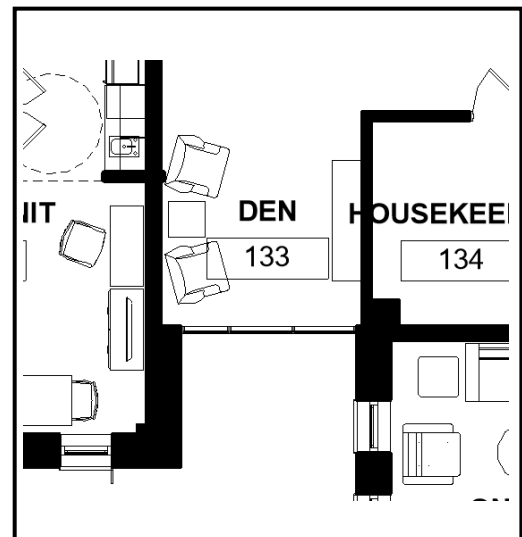
Floors: CPT (carpet)	Casework:
Walls: P (paint), wall base rubber millwork profile, 6"	Lighting: recessed LED down lights @ 1 per 65sf, (1) surface mounted LED decorative
Ceiling: P (paint), drywall	Special Criteria: additional blocking at windows for drapery and roller shades

Electrical:

Refer to Electrical Drawing

Communication / Technology Requirements:

Wireless access points



Room Layout Diagram

Space Needs Inventory | Domiciliary

Commons

Room/Space Name: Terrace (TYP)

Square Foot Area: 324

Function: Lounge space for residents and guests

Furniture, Fixtures, Equipment:

(1) outdoor lounge chair and (1) side table, (8) outdoor arm chairs, (2) 42" square tables **OR** (4) lounge chairs, (2) side tables, (1) upholstered ottoman, (1) 42" square table, (4) outdoor arm chairs, (1) heavy duty outdoor, weighted umbrella (quantities are per space)

Architectural Finishes

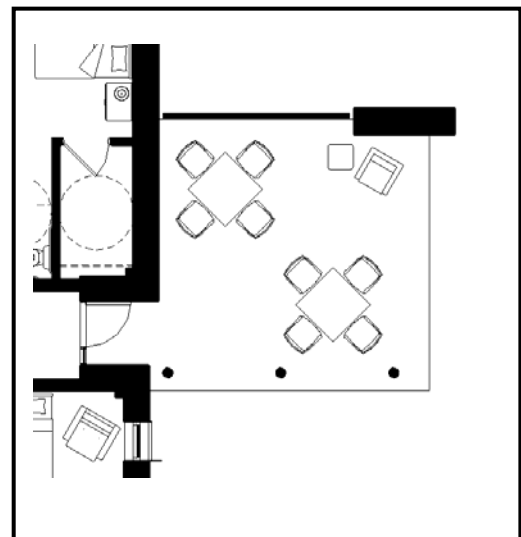
Floors: Refer to drawings	Casework: Refer to drawings
Walls: Refer to drawings	Lighting: Exterior grade wall sconce
Ceiling: P (paint), exterior drywall	

Electrical:

Refer to Electrical Drawing

Communication / Technology Requirements:

Wireless access points



Room Layout Diagram

Space Needs Inventory | Domiciliary

Commons

Room/Space Name: Terrace 791

Square Foot Area: 324

Function: Lounge space for residents and guests

Furniture, Fixtures, Equipment:

(4) outdoor arm chairs, (1) 42" square table, (1) heavy duty outdoor, weighted umbrella

Architectural Finishes

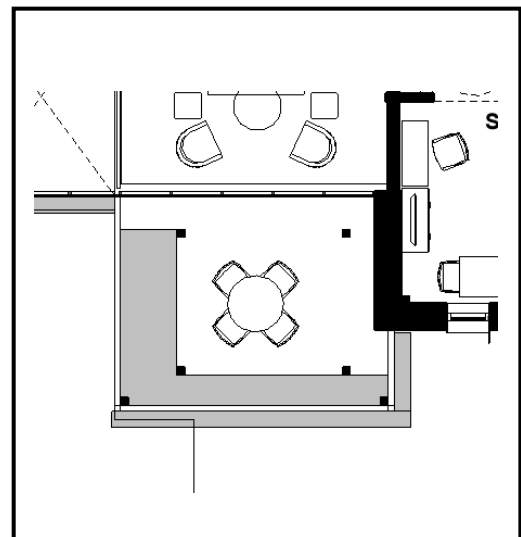
Floors: Refer to drawings	Casework: No casework
Walls: Refer to drawings	Lighting: Refer to drawings
Ceiling: P (paint), exterior drywall	

Electrical:

Refer to Electrical Drawing

Communication / Technology Requirements:

Wireless access points



Room Layout Diagram

Space Needs Inventory | Domiciliary

Service

Room/Space Name: Housekeeping 134, 232, 333, Janitor 158

Square Foot Area: 90 (per space)

Function: BOH housekeeping storage and utilities

Furniture, Fixtures, Equipment:

Housekeeping Cart, wire shelving units

Architectural Finishes

Floors: sealed concrete	Casework:
Walls: full-height FRP, rubber wall base, 4"	Lighting: recessed LED 2X4's
Ceiling: ACT with: minimum .85 NRC and 35 CAC; free of Red List chemicals per Living Building Challenge 3.0; and 75% recycled content	Special Criteria:

Electrical:

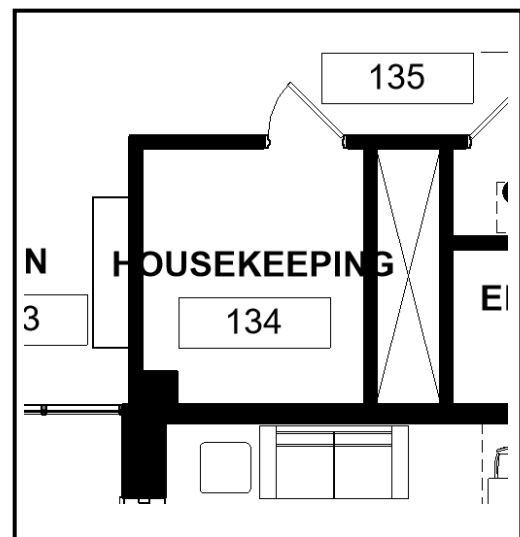
Refer to Electrical Drawing

Plumbing:

(1) mop sink

Communication / Technology Requirements:

Wireless access points



Room Layout Diagram

Space Needs Inventory | Domiciliary

Service

Room/Space Name: Linen 042, 136, 148, 234, 242, 335, 343

Square Foot Area: 21 (per space)

Function: BOH linen storage

Furniture, Fixtures, Equipment:

Wire Shelving Unit

Architectural Finishes

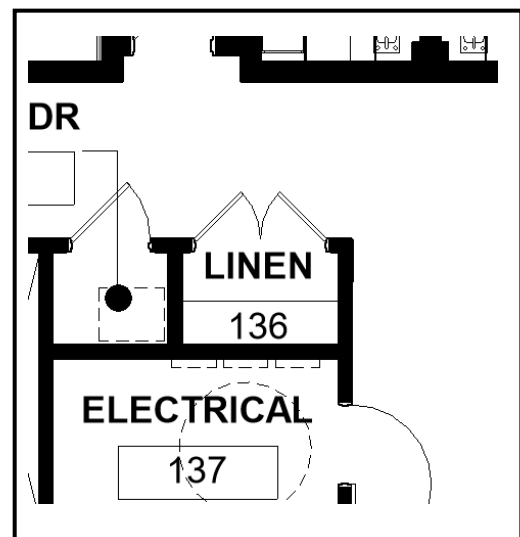
Floors: sealed concrete	Casework:
Walls: full-height FRP, rubber wall base, 4"	Lighting: suspended LED fixtures
Ceiling: open	Special Criteria: shelving

Electrical:

Refer to Electrical Drawing

Communication / Technology Requirements:

Wireless access points



Room Layout Diagram

Space Needs Inventory | Domiciliary

Service

Room/Space Name: Trash 031, 143, 237, 338

Square Foot Area: 63 (per space)

Function: BOH trash

Furniture, Fixtures, Equipment:

Recycling bins

Architectural Finishes

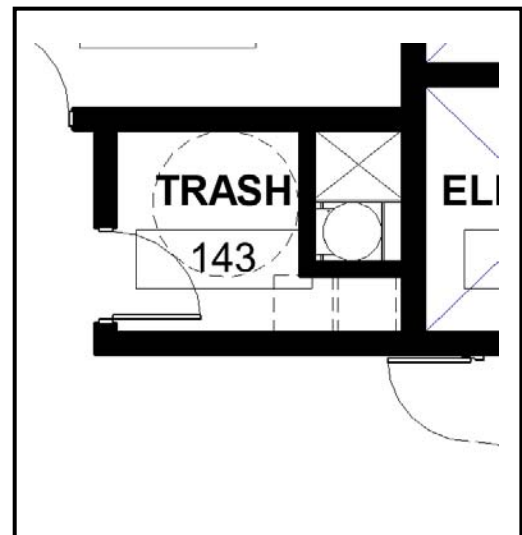
Floors: sealed concrete	Casework:
Walls: full-height FRP, rubber wall base, 4"	Lighting: suspended LED fixtures
Ceiling: open	Special Criteria:

Electrical:

Refer to Electrical Drawing

Communication / Technology Requirements:

Wireless access points



Room Layout Diagram

Space Needs Inventory | Domiciliary

Admin

Room/Space Name: Office Support 139

Square Foot Area: 292

Function: Admin suite entry

Furniture, Fixtures, Equipment:

(4) lounge chairs and (2) side table, (1) 42" round table, (4) upholstered arm chairs, manual roller shades, TV

Architectural Finishes

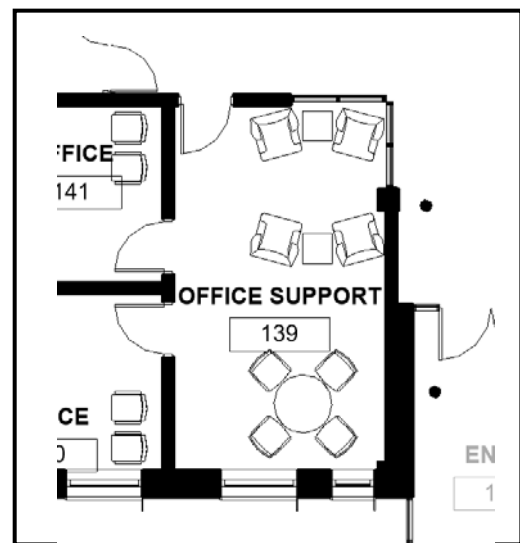
Floors: CPT (carpet)	Casework:
Walls: P (paint), wall base rubber millwork profile, 4"	Lighting: recessed LED down lights @ 1 per 65sf, surface mounted LED decorative
Ceiling: P (paint), drywall	Special Criteria:

Electrical:

Refer to Electrical Drawing

Communication / Technology Requirements:

Wireless access points



Room Layout Diagram

Space Needs Inventory | Domiciliary

Admin

Room/Space Name: Office 140, 141

Square Foot Area: 134 (per space)

Function: Admin office

Furniture, Fixtures, Equipment:

(1) L-shape desk and (1) task chair, (2) upholstered arm chairs, (1) book case, manual roller shades (quantities are per space)

Architectural Finishes

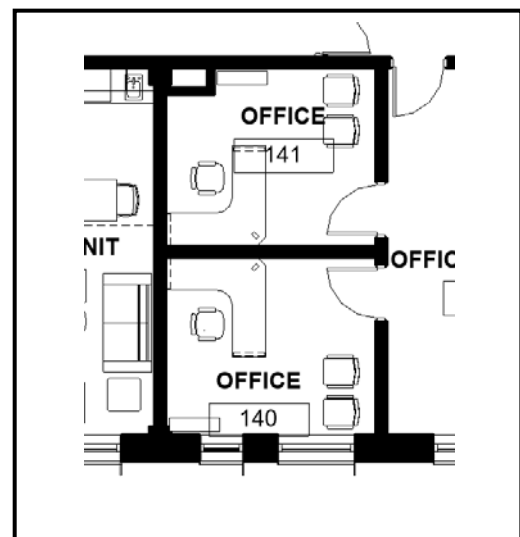
Floors: CPT (carpet)	Casework:
Walls: P (paint), wall base rubber millwork profile, 4"	Lighting: surface mounted LED decorative
Ceiling: P (paint), drywall	Special Criteria:

Electrical:

Refer to Electrical Drawing

Communication / Technology Requirements:

Wireless access points



Room Layout Diagram

Space Needs Inventory | Domiciliary

Commons

Room/Space Name: Laundry Den 039, 133, 145, 231, 239, 332, 340

Square Foot Area: 110 (per space)

Function: Lounge space for residents and guests

Furniture, Fixtures, Equipment:

(2) lounge chairs and (1) side table, (1) media cabinet, (1) table lamp, manual roller shades (quantities are per space)

Architectural Finishes

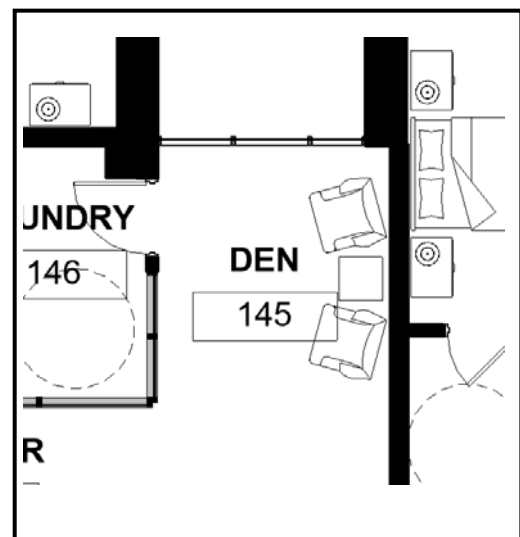
Floors: CPT (carpet)	Casework:
Walls: P (paint), wall base rubber millwork profile, 6"	Lighting: recessed LED down lights @ 1 per 65sf, surface mounted LED decorative
Ceiling: P (paint), drywall	Special Criteria:

Electrical:

Refer to Electrical Drawing

Communication / Technology Requirements:

Wireless access points



Room Layout Diagram

Space Needs Inventory | Domiciliary

Commons

Room/Space Name: Laundry 040, 146, 240, 341

Square Foot Area: 100 (per space)

Function: Laundry space for residents

Furniture, Fixtures, Equipment:

(1) washer, (1) dryer (quantities are per space)

Architectural Finishes

Floors: wood look LVT (luxury vinyl tile) plank 10" x 40" with: ashlar installation method;	Casework: laminated wood veneer lockable base and upper cabinetry, melamine interiors, and adjustable shelving; recycled glass quartz countertop and backsplash with: 75% recycled content by weight, materials free of petrochemical and plastic resins, made in the USA, and scratch and UV-resistant
Walls: P (paint), coordinating porcelain tile wall base	Lighting: recessed LED 2x4s
Ceiling: scrubbable ACT with: minimum .7 NRC and 35 CAC; free of Red List chemicals per Living Building Challenge 3.0; mold and mildew resistant finish; and 75% recycled content	Special Criteria:

Accessories:

Paper towel dispenser, soap dispenser

Electrical:

Refer to Electrical Drawing

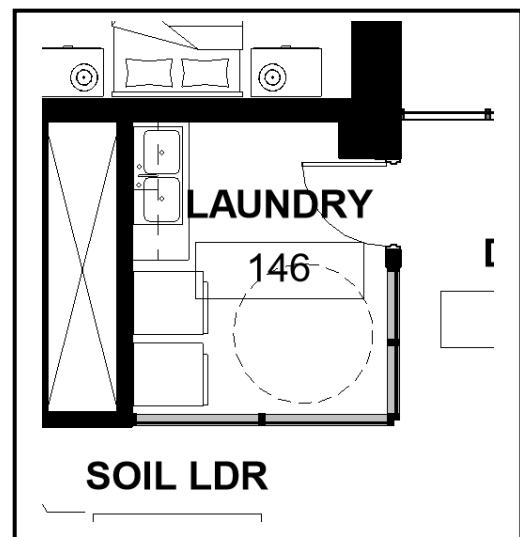
Plumbing:

Two basin sink

Faucet w/ pull-out spray, satin nickel finish

Communication / Technology Requirements:

Wireless access points



Room Layout Diagram

Space Needs Inventory | Domiciliary

Commons

Room/Space Name: Den 330

Square Foot Area: 199

Function: Lounge space for residents and guests

Furniture, Fixtures, Equipment:

(4) lounge chairs, (2) side tables, (1) upholstered ottoman, (1) fireplace

Architectural Finishes

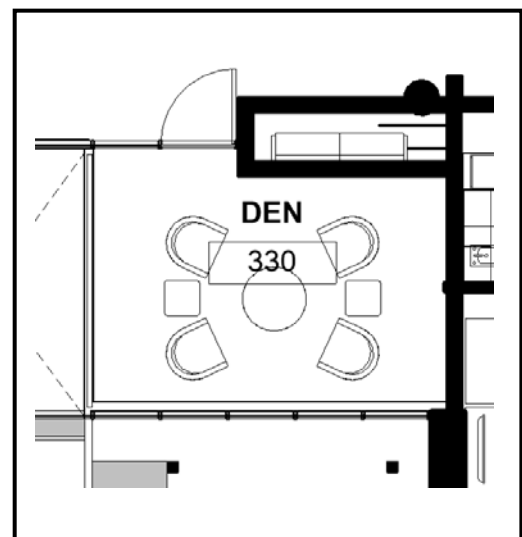
Floors: CPT (carpet)	Casework:
Walls: P (paint), decorative tile or engineered stone fireplace surround, wood mantel, wall base rubber millwork profile, 6"	Lighting: recessed LED down lights @ 1 per 65sf, (1) surface mounted LED decorative
Ceiling: P (paint), drywall	Special Criteria:

Electrical:

Refer to Electrical Drawing

Communication / Technology Requirements:

Wireless access points



Room Layout Diagram

Space Needs Inventory | Domiciliary

Commons

Room/Space Name: Wellness / Fitness 151

Square Foot Area: 480

Function: Exercise space for residents

Furniture, Fixtures, Equipment:

(4) treadmills, (2) elliptical trainers, (2) recumbent bicycles, (2) dumbbell storage

Architectural Finishes

Floors: solution dyed textile composite carpet tile with: non-directional installation method; CRI Green Label Plus certification; floating no glue installation with manufacturer-recommended adhesive tabs; 40% pre-consumer recycled content and 15% post-consumer recycled content; backing certified to the Platinum level of the NSF/ANSI 140 Sustainable Assessment for Carpet	Casework:
Walls: P (paint), wall base rubber millwork profile, 4"	Lighting: recessed LED 2X2's
Ceiling: ACT with: minimum .85 NRC and 35 CAC; free of Red List chemicals per Living Building Challenge 3.0; and 75% recycled content	Special Criteria:

Accessories:

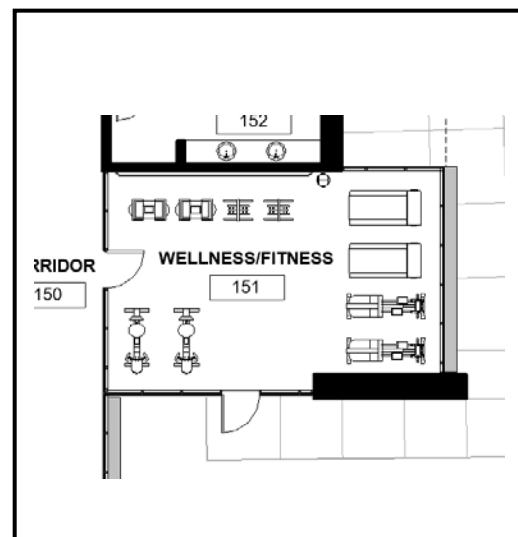
Full height tempered glass mirror, hand sanitizer dispenser, paper towel dispenser

Electrical:

Refer to Electrical Drawing

Communication / Technology Requirements:

Wireless access points



Room Layout Diagram

Space Needs Inventory | Domiciliary

Commons

Room/Space Name: Public Restroom 152, 153

Square Foot Area: 171 (per space)

Function: Bathroom space for residents and guests

Architectural Finishes

Floors: large format porcelain tile, size varies from 12"x24" to 48"x48" with: minimum 4% recycled content, Green Squared Certified manufacturing process, US sourced materials, installed in decorative pattern	Casework: recycled glass quartz floating countertop with: 75% recycled content by weight, materials free of petrochemical and plastic resins, made in the USA, and scratch and UV-resistant; matching apron and integral solid surface bowls
Walls: P (paint); coordinating porcelain tile cove wall base; VWC2 (type II wallcovering) @ sink wall; ceramic tile @ wet wall with: 4% recycled content, Green Squared Certified manufacturing process, US sourced materials	Lighting: recessed LED down lights @ 1 per 65sf, (1) recessed linear LED fixture @ toilet wet wall, and (2) decorative sconces on either side of each sink
Ceiling: P (paint), drywall	Special Criteria: All lighting and plumbing fixtures and toilet accessories to be satin nickel

Accessories:

Wood frame tempered glass mirror, deck mounted touchless soap dispenser (@ each sink), hand dryer, recess mounted trash receptacle; grab bars, robe hook, and toilet paper dispenser (@ each stall), and sanitary napkin disposal (@ women's stalls only)

Electrical:

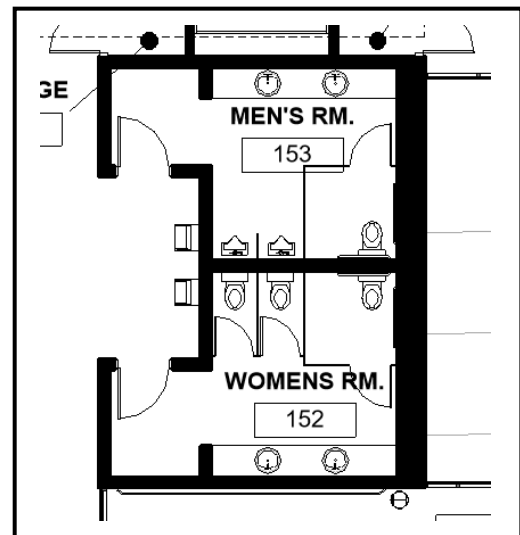
Refer to Electrical Drawing

Plumbing:

Bathroom faucet, satin nickel finish

Communication / Technology Requirements:

Wireless access points



Room Layout Diagram

Space Needs Inventory | Domiciliary

Commons

Room/Space Name: Dining 154

Square Foot Area: 2,443

Function: Dining space for residents and guests

Furniture, Fixtures, Equipment:

(74) upholstered arm chairs, (12) 42" square tables, (4) 36" square tables, (3) 60" round tables, (4) lounge chairs, (2) side tables, (1) coffee table; (26) outdoor arm chairs, (5) 42" outdoor square tables, (5) heavy duty outdoor umbrellas, (3) 36" outdoor square tables; gas fireplace; motorized roller shades and decorative drapery

Architectural Finishes

Floors: large format porcelain tile, size varies from 12"x24" to 48"x48" with: minimum 4% recycled content, Green Squared Certified manufacturing process, US sourced materials, installed in decorative pattern; CPT (carpet)	Casework: bussing and trash station: laminated wood veneer lockable base cabinetry, melamine interiors, and adjustable shelving with trash/recycling canisters on one side; residential kitchen: laminated wood veneer lockable base and upper cabinetry, melamine interiors, and adjustable shelving; recycled glass quartz countertop and backsplash with: 75% recycled content by weight, materials free of petrochemical and plastic resins, made in the USA, and scratch and UV-resistant
Walls: P (paint); decorative tile or engineered stone fireplace surround, wood mantel, wall base rubber millwork profile, 6"	Lighting: recessed LED down lights @ 1 per 65sf (high output for high ceiling), Randomly placed decorative pendant / sconce LED fixtures
Ceiling: P (paint), drywall; fabric-wrapped acoustic panels, COM fabric selection	Special Criteria: additional blocking at windows for drapery and roller shades

Accessories:

Hand sanitizer dispenser, paper towel dispenser

Electrical:

Refer to Electrical Drawing

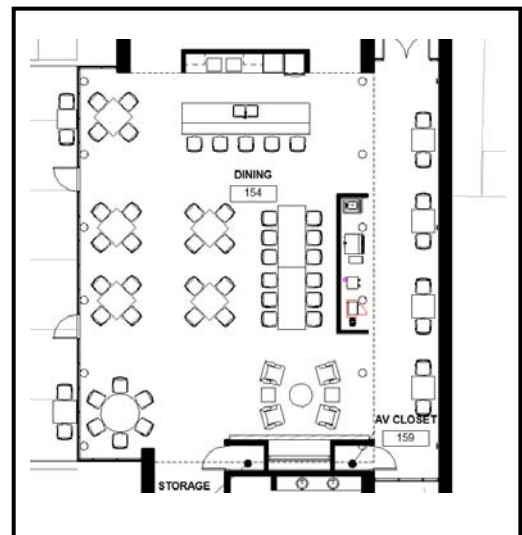
Plumbing:

Refer to Plumbing and Food Service Drawings

Communication / Technology Requirements:

Wireless access points

Ceiling mounted projector, speakers, and screen



Room Layout Diagram

Space Needs Inventory | Domiciliary

Commons

Room/Space Name: Kitchen 155

Square Foot Area: 319

Function: Serving space for residents and guests

Architectural Finishes

Floors: large format porcelain tile, size varies from 12"x24" to 48"x48" with: minimum 4% recycled content, Green Squared Certified manufacturing process, US sourced materials, installed in decorative pattern; quarry tile in Kitchen Prep Area and Kitchen Pantry	Casework: serving station: laminated wood veneer lockable base cabinetry, melamine interiors, and adjustable shelving; recycled glass quartz countertop and backsplash with: 75% recycled content by weight, materials free of petrochemical and plastic resins, made in the USA, and scratch and UV-resistant
Walls: P (paint); PVC-free vinyl wood-look sheet wall protection; coordinating porcelain tile base in Kitchen and coordinating quarry tile base in Kitchen Prep Area and Kitchen Pantry	Lighting: recessed LED down lights @ 1 per 65sf and decorative pendant LED fixtures in resident kitchen / recessed LED 2X2's in the Kitchen Prep and Pantry
Ceiling: scrubbable ACT with: minimum .7 NRC and 35 CAC; free of Red List chemicals per Living Building Challenge 3.0; mold and mildew resistant finish; and 75% recycled content	Special Criteria:

Accessories:

Hand sanitizer dispenser, paper towel dispenser

Electrical:

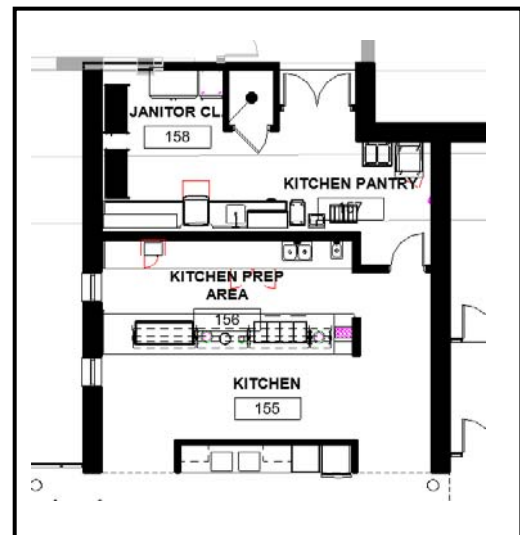
Refer to Electrical Drawing

Plumbing:

Residential kitchen faucet with pull-out spray, satin nickel finish. Refer to Food Service Drawings

Communication / Technology Requirements:

Wireless access points



Room Layout Diagram