

CDB - PROJECT NUMBER 825-030-075

SIUE Health Sciences Building
SIUE
EDWARDSVILLE, MADISON, ILLINOIS
CDB BUILDING INVENTORY NO.

FOR:
STATE OF ILLINOIS
CAPITAL DEVELOPMENT BOARD

USING AGENCY: SIUE

BY:
HELLMUTH, OBATA + KASSABAUM, INC.
10 SOUTH BROADWAY, SUITE 200
(314) 421-2000

IMEG
15 SUNNEN DR #104, MAPLEWOOD, MO 63143
(314) 645-1132

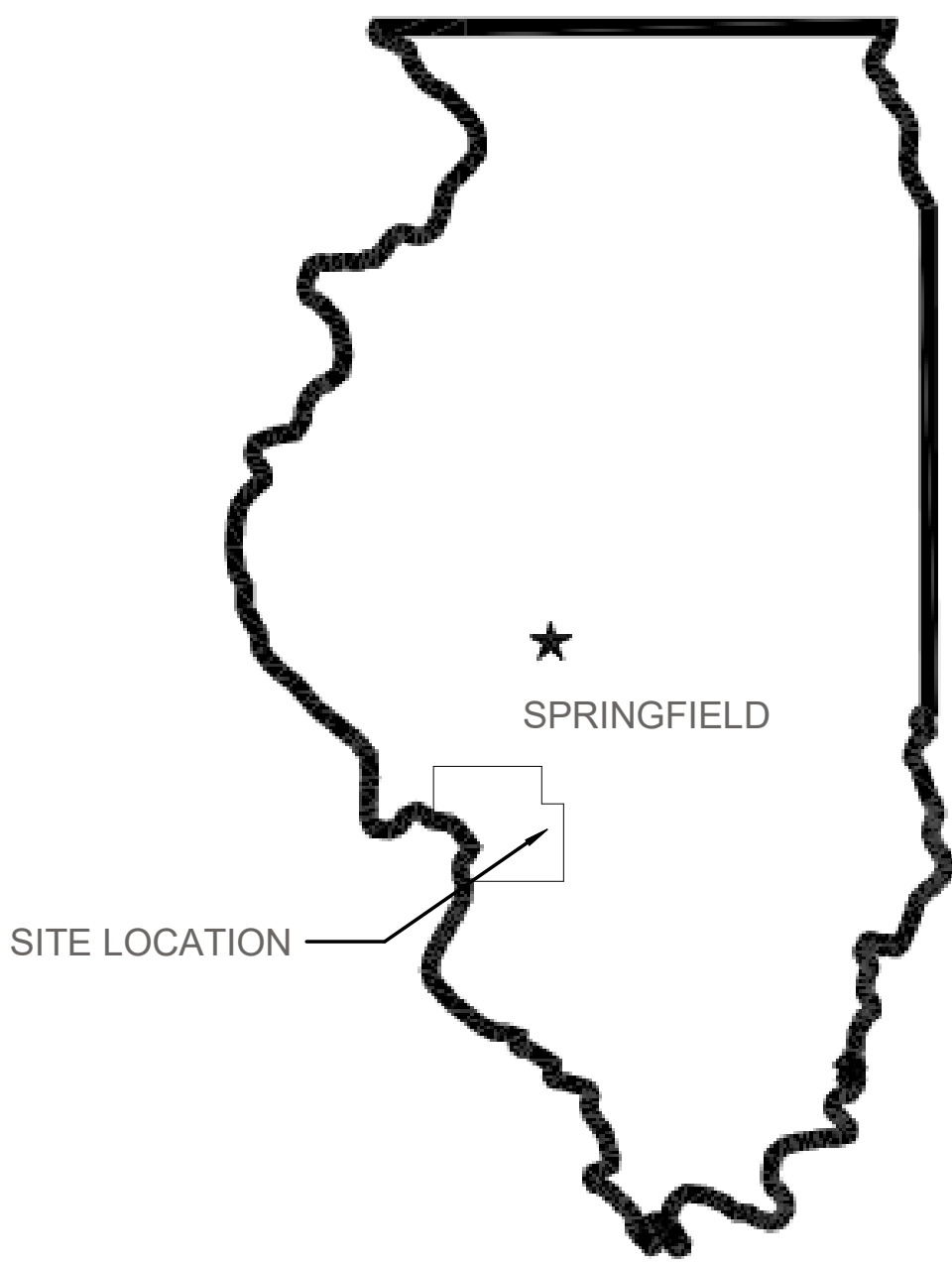
CUSTOM ENGINEERING, INC.
1552 S 7TH ST STE 201-B, ST. LOUIS, MO 63104
(314) 366-3360

DAVID MASON + ASSOCIATES
800 S VANDEVENTER AVE, ST. LOUIS, MO 63110
(314) 534-1030

[DTLS] LANDSCAPE ARCHITECTURE
1624 TOWER GROVE AVE, ST. LOUIS, MO 63110
(314) 534-4000

KUHN & TRELLO CONSULTING ENGINEERS, LLC
109 N 7TH ST, SPRINGFIELD, IL 62701
(217) 679-0044

SHEN MILSOM & WILKE LLC
2 N RIVERSIDE PLAZA #1460CHICAGO, IL 60606
312-559-4585



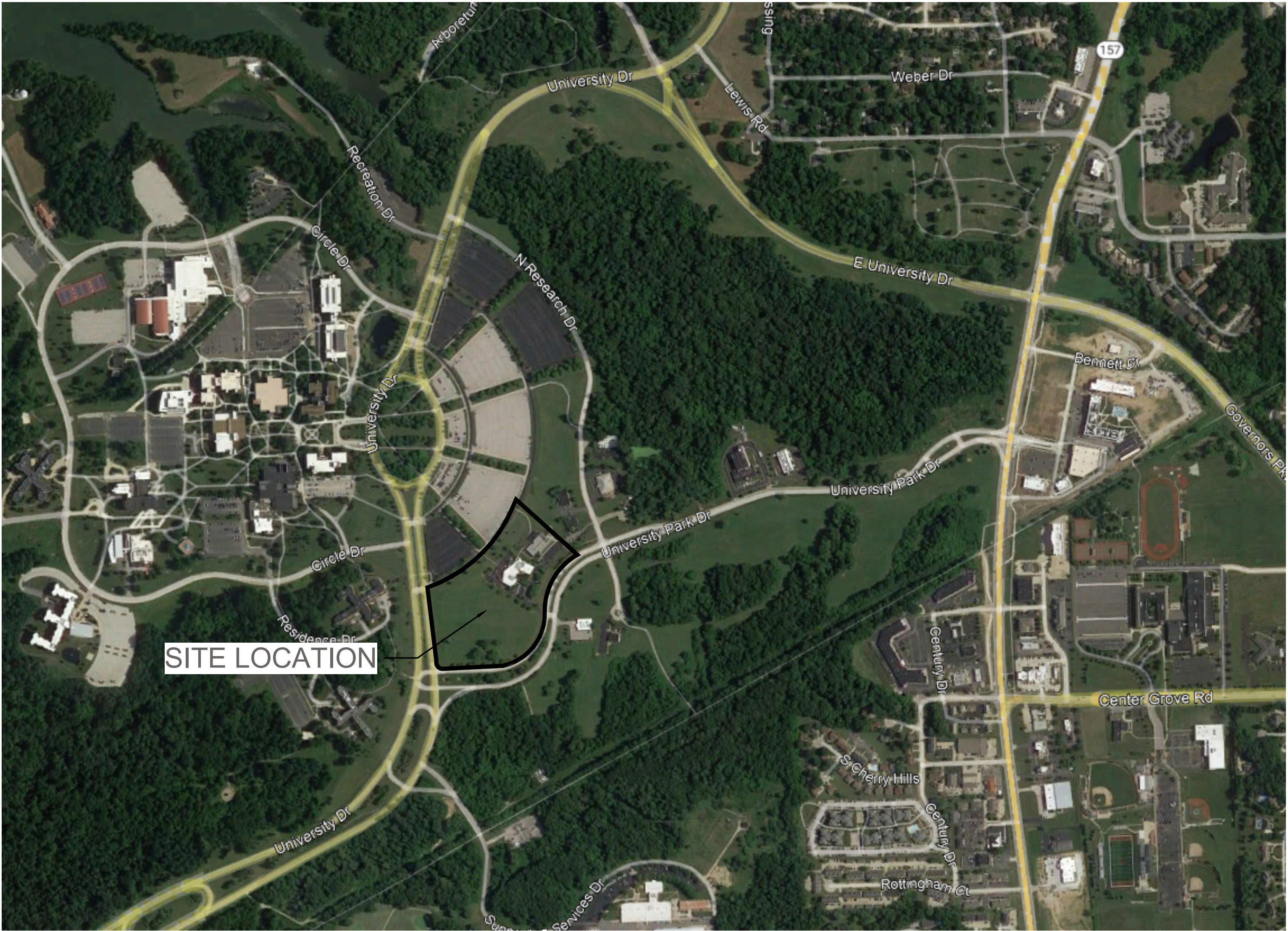
STATE LOCATION PLAN

NOTE:
THESE CONCEPT DRAWINGS ARE REFERENCE INFORMATION DOCUMENTS (RIDs) AND ARE NOT CONSIDERED CONTRACT DOCUMENTS.

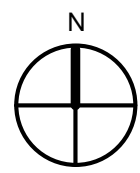
RIDs ARE PROVIDED TO PROPOSERS FOR INFORMATIONAL PURPOSES ONLY, AND ARE RELIED UPON AT THE PROPOSER'S/DESIGN-BUILDER'S OWN RISK. THE CONCEPT DRAWINGS DO NOT WARRANT OR REPRESENT THAT THE INFORMATION CONTAINED HEREIN IS COMPLETE OR ACCURATE OR THAT SUCH INFORMATION IS IN CONFORMITY WITH THE REQUIREMENTS OF THE PROJECT. DESIGN-BUILDER SHALL HAVE NO RIGHT TO ADDITIONAL COMPENSATION OR TIME EXTENSION BASED ON ANY INCOMPLETENESS OR INACCURACY IN THE CONCEPT DRAWINGS.

INDEX OF DRAWINGS



PROJECT SHEET INDEX	
SHEET NUMBER	SHEET TITLE
01 GENERAL	
G000	COVER SHEET
G001	AXON VIEWS
06.1 ARCHITECTURAL FLOOR PLANS	
A101	COMPOSITE FLOOR PLAN - LEVEL 1
A102	COMPOSITE FLOOR PLAN - LEVEL 2
A103	COMPOSITE FLOOR PLAN - LEVEL 3
06.3 ARCHITECTURAL BUILDING ELEVATIONS	
A501	BUILDING ELEVATIONS

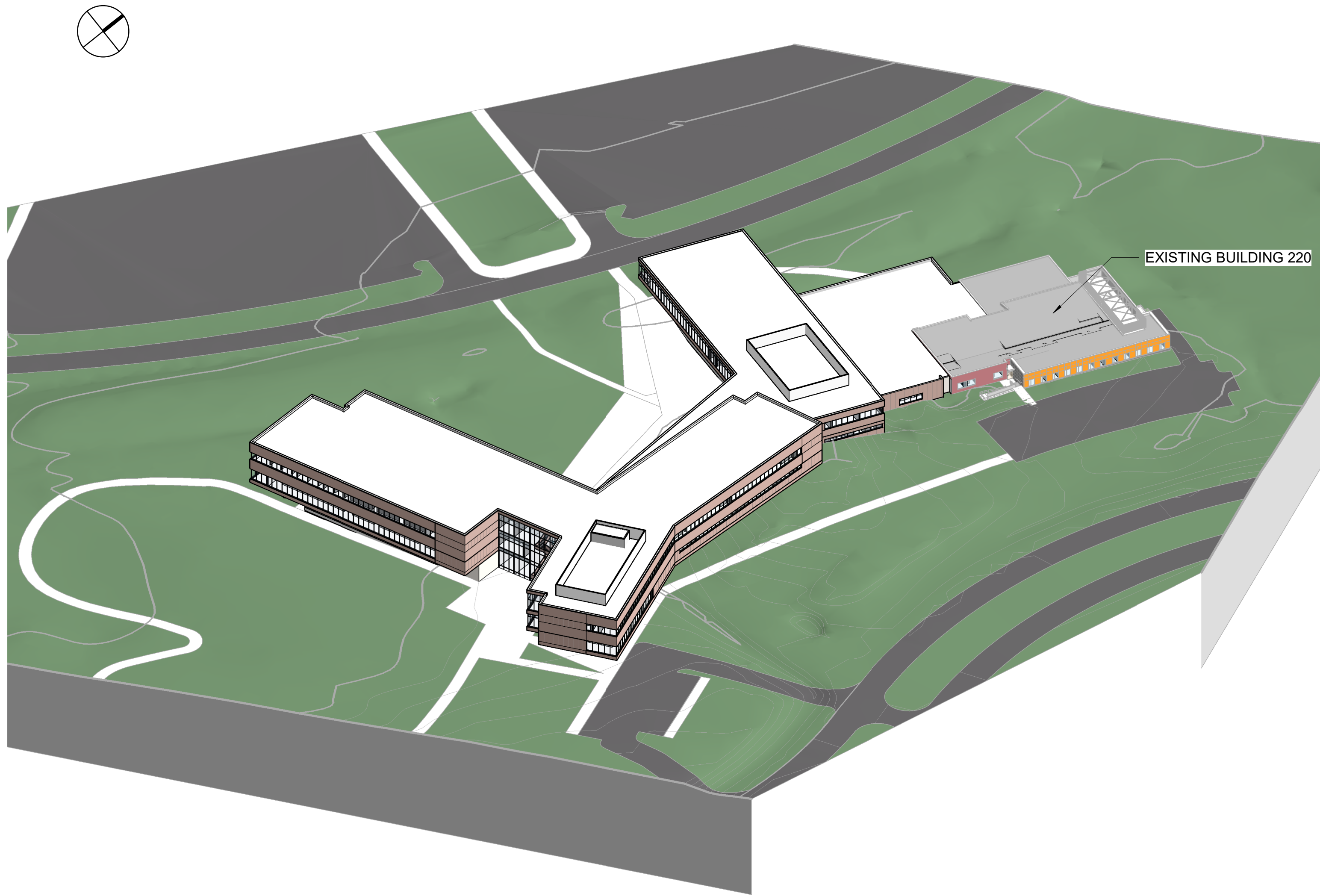


AREA LOCATION PLAN

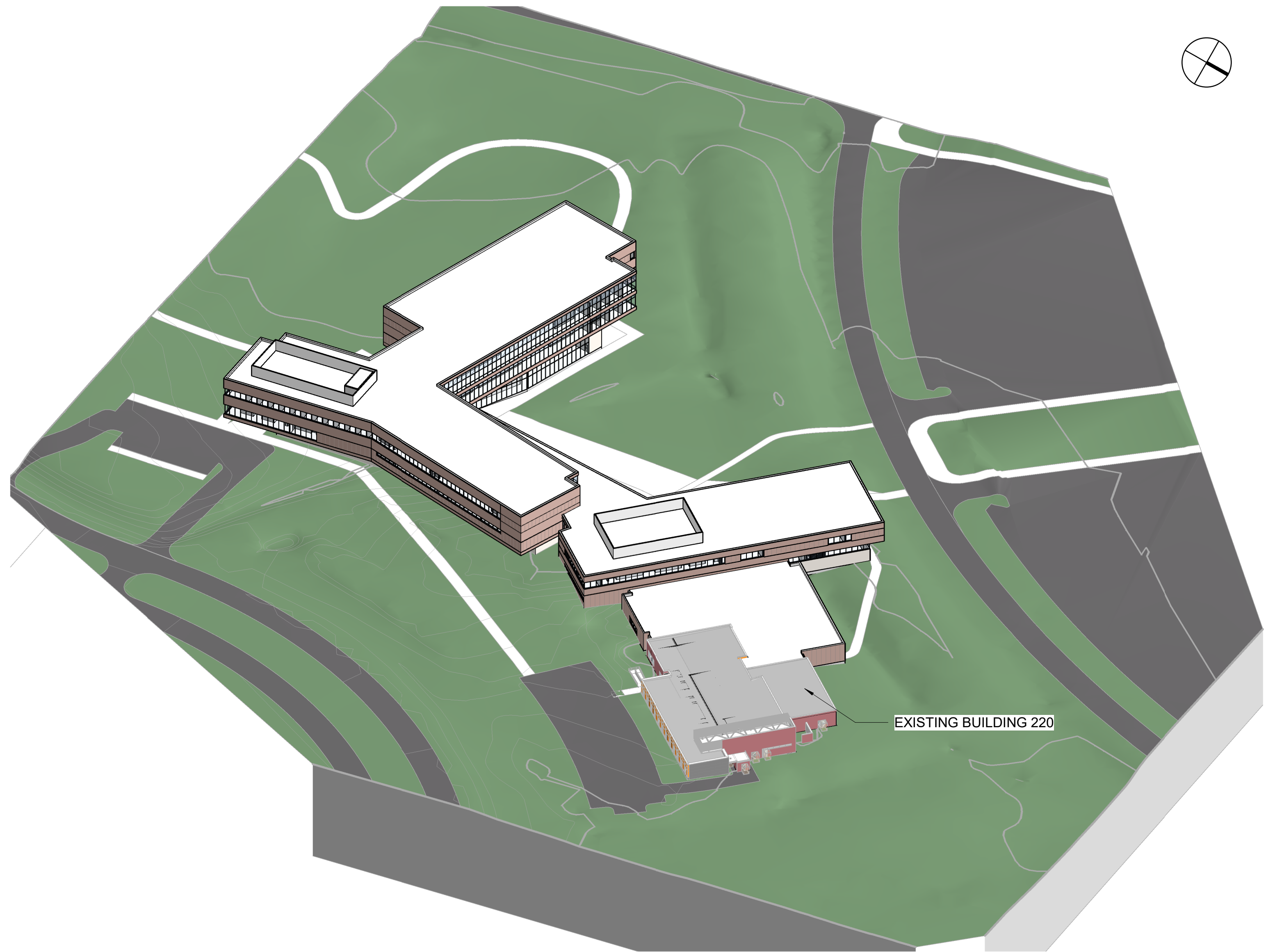


CONCEPT DRAWINGS

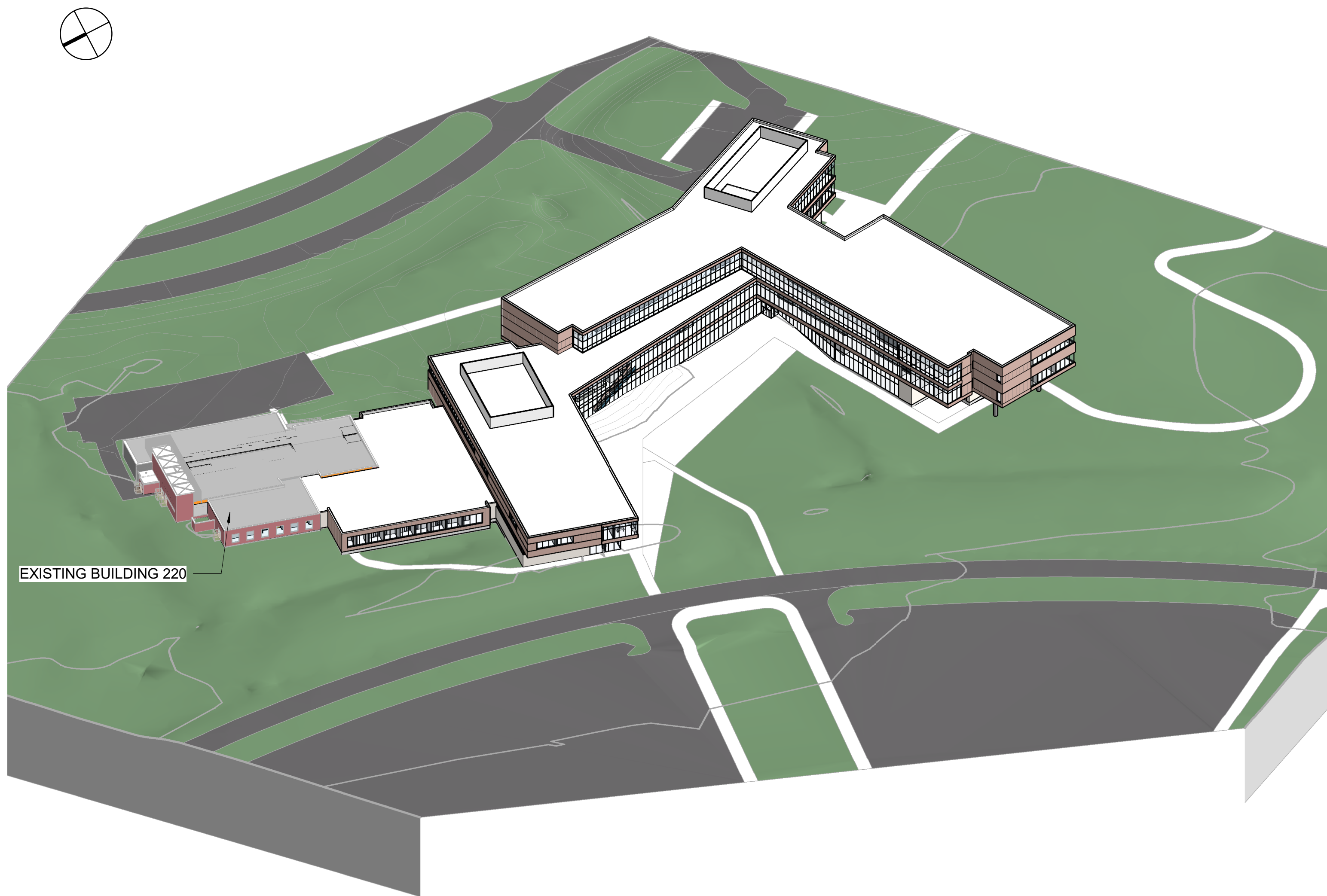
REVISIONS			DRAWN	PREPARED	NOT FOR CONSTRUCTION	 Hellmuth, Obata + Kassabaum, Inc. 10 South Broadway, Suite 200 St. Louis, MO 63102 USA t +1 314 421 2000		COVER SHEET		PROJECT NO. 825-030-075
No.	DATE	Description	---	---				SIUE Health Sciences Building SIUE		DATE 03/14/2022
			TRACED	APPROVED				1 Hairpin Dr		Sheet Number G000
			---	---				EDWARDSVILLE, MADISON, ILLINOIS		1 of 6 SHEETS
			CHECKED	APPROVED						



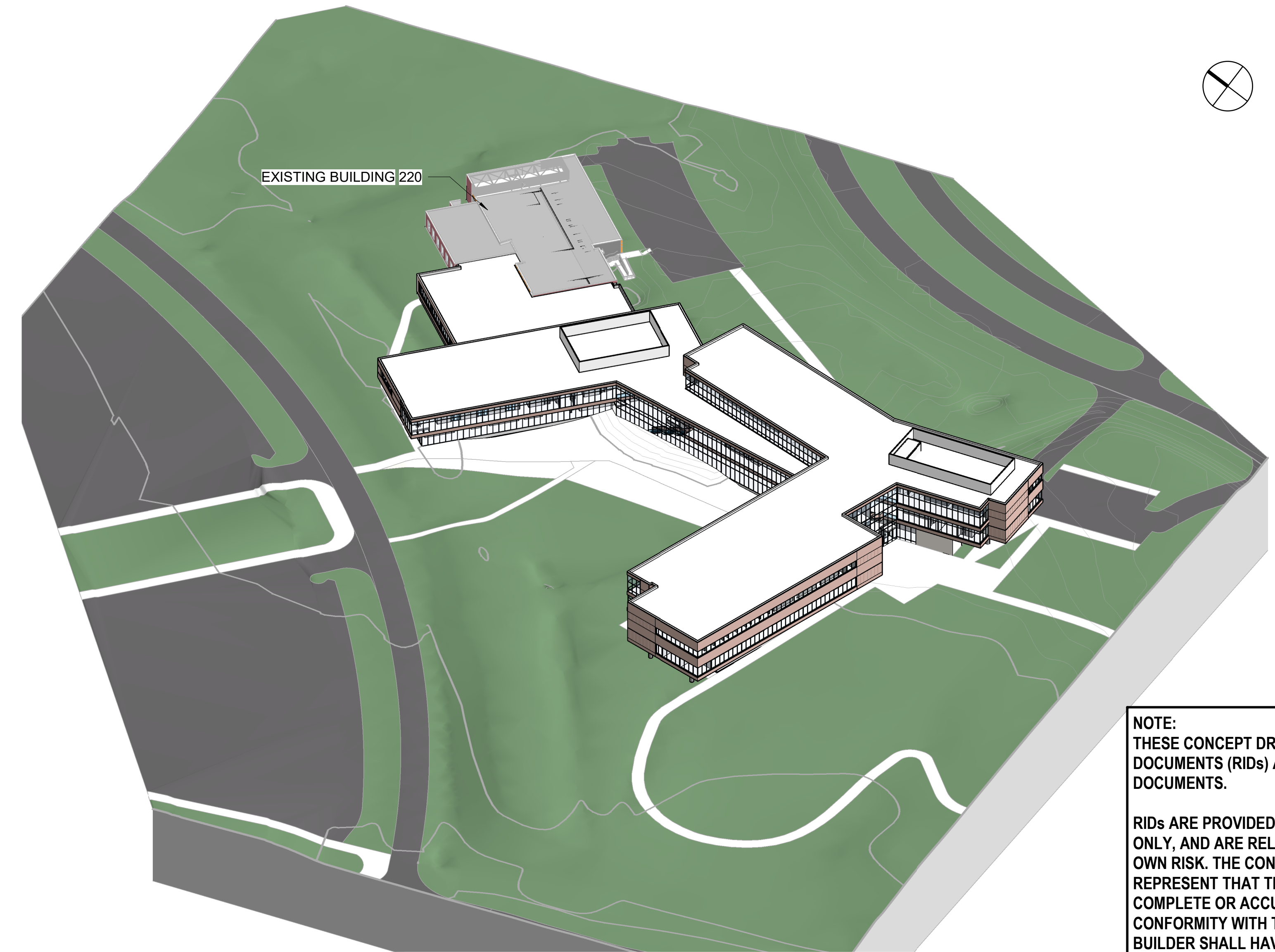
4 AXON - SOUTHEAST



3 AXON - NORTHEAST



2 AXON - NORTHWEST



1 AXON - SOUTHWEST

NOTE:
THESE CONCEPT DRAWINGS ARE REFERENCE INFORMATION DOCUMENTS (RIDs) AND ARE NOT CONSIDERED CONTRACT DOCUMENTS.

RIDs ARE PROVIDED TO PROPOSERS FOR INFORMATIONAL PURPOSES ONLY, AND ARE RELIED UPON AT THE PROPOSER'S/DESIGN-BUILDER'S OWN RISK. THE CONCEPT DRAWINGS DO NOT WARRANT OR REPRESENT THAT THE INFORMATION CONTAINED HEREIN IS COMPLETE OR ACCURATE OR THAT SUCH INFORMATION IS IN CONFORMITY WITH THE REQUIREMENTS OF THE PROJECT. DESIGN-BUILDER SHALL HAVE NO RIGHT TO ADDITIONAL COMPENSATION OR TIME EXTENSION BASED ON ANY INCOMPLETENESS OR INACCURACY IN THE CONCEPT DRAWINGS.

CONCEPT DRAWINGS

B:\Revit Projects\03.01047.00 SIUE Health Sciences Building\SIUEHEW-HOK-AR-Central.rvt_Philip Jordan_20220314.rvt

NOTE: CONTRACTOR SHALL OBTAIN AND VERIFY ALL DIMENSIONS AND CONDITIONS AT JOB SITE AND BE FULLY RESPONSIBLE FOR SAME.

REVISIONS			DRAWN	PREPARED
No.	DATE	Description	---	---
			TRACED	APPROVED
			---	---
			CHECKED	APPROVED
			---	---

NOT FOR CONSTRUCTION



Hellmuth, Obata + Kassabaum, Inc.
10 South Broadway, Suite 200
St. Louis, MO 63102 USA
t +1 314 421 2000




State of Illinois
JB PRITZKER, GOVERNOR
Illinois Capital Development Board

AXON VIEWS	PROJECT NO.
	825-030-075
	DATE
	03/14/2022
SIUE Health Sciences Building SIUE 1 HAIRPIN DR EDWARDSVILLE, MADISON COUNTY, ILLINOIS	Sheet Number
	G001
	2 of 6 SHEETS



Graphic Scale: 1 inch = 20 feet



RIDS ARE PROVIDED TO PROPOSERS FOR INFORMATIONAL PURPOSES ONLY, AND ARE RELIED UPON AT THE PROPOSER'S/DESIGN-BUILDER'S OWN RISK. THE CONCEPT DRAWINGS DO NOT WARRANT OR REPRESENT THAT THE INFORMATION CONTAINED HEREIN IS COMPLETE OR ACCURATE OR THAT SUCH INFORMATION IS IN CONFORMITY WITH THE REQUIREMENTS OF THE PROJECT. DESIGN-BUILDER SHALL HAVE NO RIGHT TO ADDITIONAL COMPENSATION OR TIME EXTENSION BASED ON ANY INCOMPLETENESS OR INACCURACY IN THE CONCEPT DRAWINGS.

CONCEPT DRAWINGS

REVISES			DRAWN	PREPARED
No.	DATE	Description	---	---
			TRACED	APPROVED
			---	---
			CHECKED	APPROVED
			---	---

NOT FOR CONSTRUCTION



Hellmuth, Obata + Kassabaum, Inc.
10 South Broadway, Suite 200
St. Louis, MO 63102 USA
t +1 314 421 2000



**State of Illinois
JB PRITZKER, GOVERNOR
Illinois Capital Development Board**

COMPOSITE FLOOR PLAN - LEVEL 1

SIUE Health Sciences Building
SIUE
1 HAIRPIN DR
EDWARDSVILLE, MADISON COUNTY, ILLINOIS

PROJECT NO.
25-030-075

DATE
3/14/2022

Sheet Number
A101

3 of 6 SHEETS

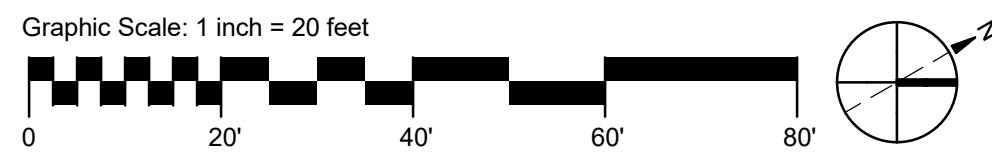
B:\Revit Projects\00.01047.00 SIUE Health Sciences Building\SIUEHEW-HOK-AR-Central.rvt Philip Jordan, 20230314.rvt



PROGRAM COLOR LEGEND

- APPLIED HEALTH WORKPLACE
- BUILDING SUPPORT
- CLASSROOMS & TEACHING CIRCULATION
- CLASSROOMS & TEACHING LABS
- HORIZONTAL CIRCULATION
- NURSING MED ED/ SIMULATION
- PUBLIC & AMENITY
- RESEARCH & LABS
- RESEARCH CIRCULATION
- RESEARCH OFFICES & WORKPLACE
- SHARED WORKPLACE
- SIMULATION CIRCULATION
- SOP - DEANS SUITE
- VERTICAL CIRCULATION
- VIVARIUM
- VIVARIUM CIRCULATION

1 COMPOSITE FLOOR PLAN - LEVEL 2
1" = 20'-0"



NOTE: CONTRACTOR SHALL OBTAIN AND VERIFY ALL DIMENSIONS AND CONDITIONS AT JOB SITE AND BE FULLY RESPONSIBLE FOR SAME.

REVISIONS		
No.	DATE	Description

---	DRAWN
---	TRACED
---	CHECKED

---	PREPARED
---	APPROVED
---	APPROVED

NOT FOR CONSTRUCTION



Hellmuth, Obata + Kassabaum, Inc.
10 South Broadway, Suite 200
St. Louis, MO 63102 USA
t +1 314 421 2000



State of Illinois
JB PRITZKER, GOVERNOR
Illinois Capital Development Board

COMPOSITE FLOOR PLAN - LEVEL 2

SIUE Health Sciences Building
SIUE
1 HAIRPIN DR
EDWARDSVILLE, MADISON COUNTY, ILLINOIS

PROJECT NO. 825-030-075
DATE 03/14/2022
Sheet Number A102 4 of 6 SHEETS


NOTE:
THESE CONCEPT DRAWINGS ARE REFERENCE INFORMATION
DOCUMENTS (RIDs) AND ARE NOT CONSIDERED CONTRACT
DOCUMENTS.

RIDs ARE PROVIDED TO PROPOSERS FOR INFORMATIONAL PURPOSES
ONLY, AND ARE RELIED UPON AT THE PROPOSER'S/DESIGN-BUILDER'S
OWN RISK. THE CONCEPT DRAWINGS DO NOT WARRANT OR
REPRESENT THAT THE INFORMATION CONTAINED HEREIN IS
COMPLETE OR ACCURATE OR THAT SUCH INFORMATION IS IN
CONFORMITY WITH THE REQUIREMENTS OF THE PROJECT. DESIGN-
BUILDER SHALL HAVE NO RIGHT TO ADDITIONAL COMPENSATION OR
TIME EXTENSION BASED ON ANY INCOMPLETENESS OR INACCURACY
IN THE CONCEPT DRAWINGS.

CONCEPT DRAWINGS



Graphic Scale: 1 inch = 20 feet



0 20' 40' 60' 80'

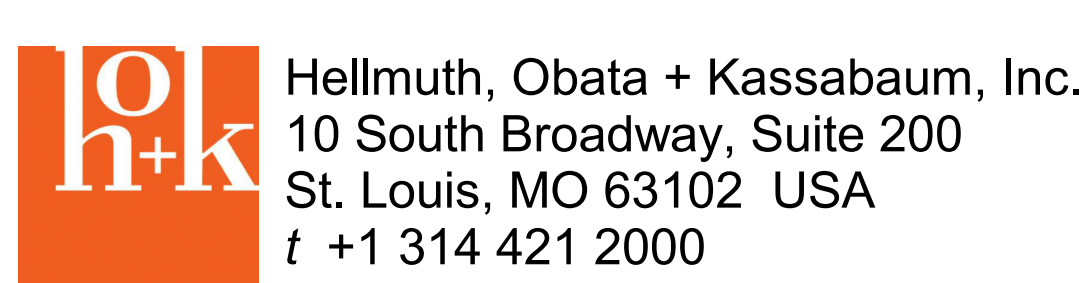
NOTE:
THESE CONCEPT DRAWINGS ARE REFERENCE INFORMATION DOCUMENTS (RIDS) AND ARE NOT CONSIDERED CONTRACT DOCUMENTS.

RIDS ARE PROVIDED TO PROPOSERS FOR INFORMATIONAL PURPOSES ONLY, AND ARE RELIED UPON AT THE PROPOSER'S/DESIGN-BUILDER'S OWN RISK. THE CONCEPT DRAWINGS DO NOT WARRANT OR REPRESENT THAT THE INFORMATION CONTAINED HEREIN IS COMPLETE OR ACCURATE OR THAT SUCH INFORMATION IS IN CONFORMITY WITH THE REQUIREMENTS OF THE PROJECT. DESIGN-BUILDER SHALL HAVE NO RIGHT TO ADDITIONAL COMPENSATION OR TIME EXTENSION BASED ON ANY INCOMPLETENESS OR INACCURACY IN THE CONCEPT DRAWINGS.



REVISONS			DRAWN	PREPARED
No.	DATE	Description	---	---
			TRACED	APPROVED
			---	---
			CHECKED	APPROVED
			---	---

NOT FOR CONSTRUCTION



**State of Illinois
JB PRITZKER, GOVERNOR
Illinois Capital Development Board**

COMPOSITE FLOOR PLAN - LEVEL 3

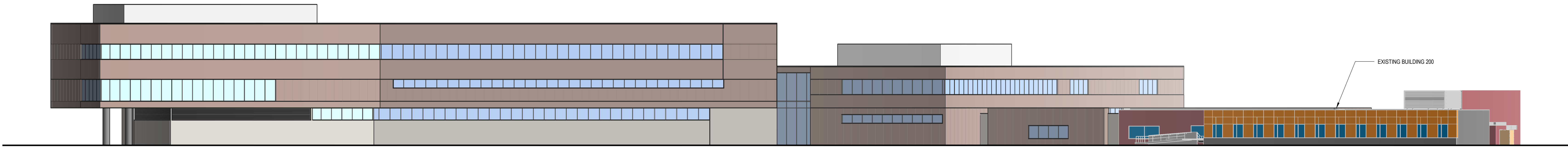
SIUE Health Sciences Building
SIUE
1 HAIRPIN DR
EDWARDSVILLE, MADISON COUNTY, ILLINOIS

PROJECT NO.
825-030-075

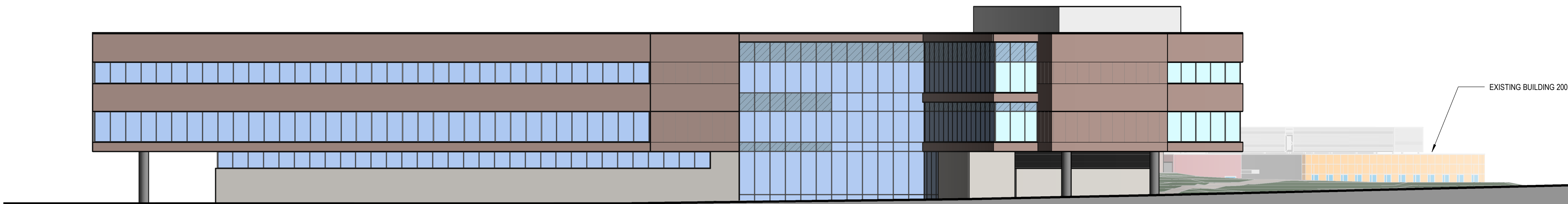
DATE
03/14/2022

Sheet Number
A103
5 of 6 SHEETS

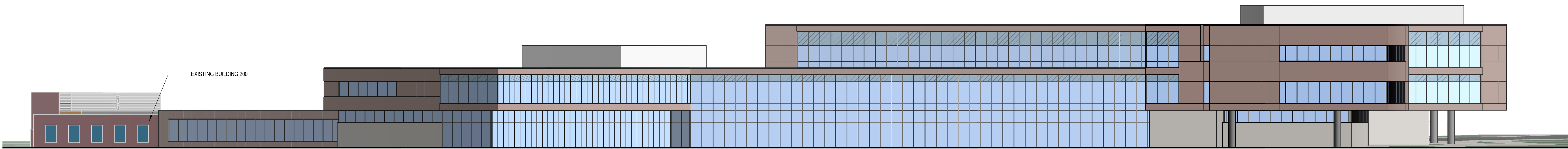
B:\Revt Projects\0010147.00 SIUE Health Sciences Building\SIUEHEV-HOK-AR-Central.rvt_Philip Jordan_20230314.rvt



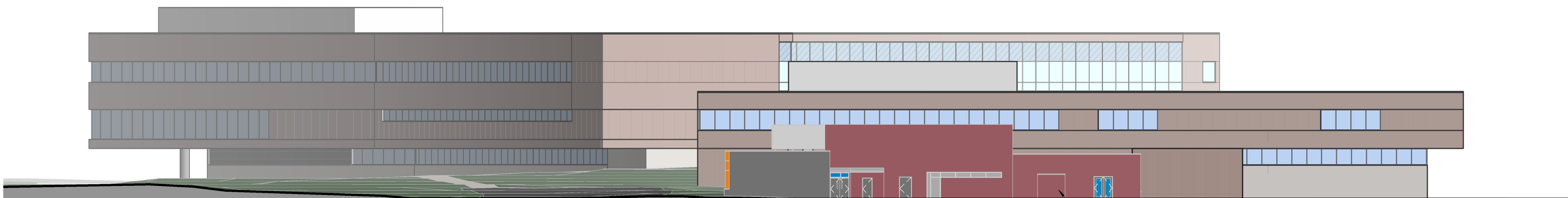
4 OVERALL BUILDING ELEVATION - SOUTH
1" = 20'-0"



3 OVERALL BUILDING ELEVATION - WEST
1" = 20'-0"



2 OVERALL BUILDING ELEVATION - NORTH
1" = 20'-0"



1 OVERALL BUILDING ELEVATION - EAST
1" = 20'-0"

NOTE:
THESE CONCEPT DRAWINGS ARE REFERENCE INFORMATION DOCUMENTS (RIDs) AND ARE NOT CONSIDERED CONTRACT DOCUMENTS.

RIDs ARE PROVIDED TO PROPOSERS FOR INFORMATIONAL PURPOSES ONLY, AND ARE RELIED UPON AT THE PROPOSER'S/DESIGN-BUILDER'S OWN RISK. THE CONCEPT DRAWINGS DO NOT WARRANT OR REPRESENT THAT THE INFORMATION CONTAINED HEREIN IS COMPLETE OR ACCURATE OR THAT SUCH INFORMATION IS IN CONFORMITY WITH THE REQUIREMENTS OF THE PROJECT. DESIGN-BUILDER SHALL HAVE NO RIGHT TO ADDITIONAL COMPENSATION OR TIME EXTENSION BASED ON ANY INCOMPLETENESS OR INACCURACY IN THE CONCEPT DRAWINGS.

NOTE: CONTRACTOR SHALL OBTAIN AND VERIFY ALL DIMENSIONS AND CONDITIONS AT JOB SITE AND BE FULLY RESPONSIBLE FOR SAME.

REVISIONS			DRAWN	PREPARED
No.	DATE	Description	---	---
			TRACED	APPROVED
			---	---
			CHECKED	APPROVED
			---	---

NOT FOR CONSTRUCTION



Hellmuth, Obata + Kassabaum, Inc.
10 South Broadway, Suite 200
St. Louis, MO 63102 USA
t +1 314 421 2000



State of Illinois
JB PRITZKER, GOVERNOR
Illinois Capital Development Board

BUILDING ELEVATIONS		PROJECT NO.
SIUE Health Sciences Building		825-030-075
SIUE		DATE
1 HAIRPIN DR		03/14/2022
EDWARDSVILLE, MADISON COUNTY, ILLINOIS		Sheet Number
		A501
		6 of 6 SHEETS