

GENERAL BIDDING NOTES

- THE SCOPE IDENTIFIED IN THE BRIDGING DOCUMENTS WAS DETERMINED IN CLOSE COORDINATION WITH IDOT AND CONTAINS THE SCOPE AND DESIGN INTENT FOR THE NEW IDOT MAINTENANCE AND MATERIAL LAB FACILITY AT THE STEVENSON YARD.
- THE DESIGN-BUILDER IS RESPONSIBLE FOR FURTHER DEVELOPING THE SCOPE AND DESIGN INTENT IDENTIFIED IN THESE BRIDGING DOCUMENTS.
- PRIOR TO SUBMISSION OF BID, THE DESIGN-BUILDER SHALL VISIT THE SITE AND BE KNOWLEDGEABLE OF ALL CONDITIONS THEREON. HE OR SHE SHALL INVESTIGATE, VERIFY, AND BE RESPONSIBLE FOR ALL CONDITIONS OF THE PROJECT AND SHALL NOTIFY CDB/IDOT OF ANY CONDITIONS REQUIRING MODIFICATION OR CLARIFICATION BEFORE PROCEEDING WITH THE WORK. THE CONTRACTOR IS RESPONSIBLE FOR ALL MEANS, METHODS, AND TECHNIQUES TO IMPLEMENT THE DESIGN AS PART OF THEIR BASE BID.
- NOTES APPEARING ON VARIOUS SHEETS ARE TO BE APPLIED TO RELATED DRAWINGS AND DETAILS. WHEN THERE ARE DISCREPANCIES BETWEEN DRAWINGS AND SPECIFICATIONS, CONSULT CDB/IDOT DURING THE BID PERIOD FOR ANY CLARIFICATION NEEDED PRIOR TO SUBMISSION OF BID. IF CDB/IDOT IS NOT CONSULTED DURING THE BID PERIOD, THE MORE STRINGENT REQUIREMENT SHALL APPLY.
- THE CONTRACTOR IS REQUIRED TO PAY FOR AND SUBMIT AN AS-BUILT SURVEY, BY A LICENSED SURVEYOR IN THE STATE OF ILLINOIS, TO CDB/IDOT INDICATING CONFORMANCE TO THE SITE GRADING PLAN AND ADA PRIOR TO THE INSTALLATION OF THE LANDSCAPING SCOPE OF WORK.
- THE DESIGN-BUILDER SHALL UTILIZE ENCLOSED GEOTECHNICAL REPORTS FOR EXCAVATION AND BACKFILL REQUIREMENTS FOR THE PROJECT. BASE BID INCLUDES EXCAVATION AND REMOVAL OF SOIL TO IDENTIFIED SUB-GRADE ELEVATION AT BUILDING PAD, BUILDING FOUNDATIONS, AND PAVED AREAS, REMOVAL AND RELOCATION OF UNSUITABLE SUB-GRADE MATERIALS AND BACKFILL OF GRANULAR MATERIAL. SEE CIVIL AND STRUCTURAL DRAWINGS AND/OR SPECIFICATIONS AND THE GEOTECHNICAL REPORT FOR SOIL REMOVAL REQUIREMENTS.
- UTILITY RUNS AND DIMENSIONS ARE APPROXIMATE. GENERAL CONTRACTOR TO VERIFY LENGTHS PRIOR TO SUBMISSION OF BID.
- ALL MATERIAL FROM EXCAVATION THAT CANNOT BE REUSED ON SITE SHALL BE STOCKPILED FOR USE ELSEWHERE, AT A LOCATION INDICATED WITHIN 1/4 MILE OF SITE OR AS INDICATED BY REPRESENTATIVE.
- IDOT OPERATIONS WILL REMAIN FUNCTIONAL AT ALL TIMES, 24 HOURS A DAY, 7 DAYS A WEEK, UNLESS OTHERWISE COORDINATED WITH THE USING AGENCY.
- IDOT IS TO REMOVE/RELOCATE THEIR PROPERTY RESIDING ON SITE INCLUDING TRAILERS, STORED MATERIALS, STOCKPILES, ETC. PRIOR TO CONSTRUCTION. CONTRACTOR TO COORDINATE DIRECTLY WITH IDOT.
- THE SUBMISSION OF A BID OR PROPOSAL WILL BE CONSTRUED AS EVIDENCE THAT THE CONTRACTOR HAS FAMILIARIZED HIMSELF WITH THE PLANS AND EXISTING CONDITIONS OF THE BUILDING SITE. CLAIMS MADE SUBSEQUENT TO THE PROPOSAL FOR MATERIALS AND LABOR BECAUSE OF DIFFICULTIES ENCOUNTERED WILL NOT BE RECOGNIZED IF THEY COULD HAVE BEEN FORESEEN, HAD PROPER EXAMINATION OF THE SITE AND/OR DRAWINGS BEEN MADE.

BID BETTERMENTS

- THE ACCESS DRIVEWAY SHOWN CONNECTING DIRECTLY TO JOLIET ROAD IS BETTERMENT G-1, TO BE PROVIDED IF THE BUDGET ALLOWS.

IDOT PROVIDED SCOPE

- IDOT TO PERFORM THE ABATEMENT ON THE EXISTING BUILDINGS.
- IDOT TO RELOCATE EXISTING CHLORIDE TANKS.
- IDOT TO PROVIDE NEW SALT RAMP.
- IDOT TO PROVIDE ALL MOVABLE EQUIPMENT.
- IDOT TO PROVIDE ALL FURNITURE.
- IDOT TO PROVIDE ALL BREAK ROOM APPLIANCES.
- IDOT TO PROVIDE ALL INTERIOR ROOM SIGNAGE.
- IDOT TO PROVIDE ALL LOCKERS.
- IDOT TO PROVIDE ALL FIRE EXTINGUISHERS.
- IDOT TO PROVIDE ALL WALK-OFF MATS.
- IDOT TO PROVIDE TOILET ROOM ACCESSORIES, INCLUDING SOAP DISPENSERS, TOILET PAPER DISPENSERS, AND COAT HOOKS.

GENERAL DESIGN NOTES

- THE DESIGN-BUILDER SHALL FOLLOW ALL CURRENT CDB STANDARDS AND FORMS, INCLUDING THE DIVISION 00 AND 01 SPECIFICATION SECTIONS.
- THE DESIGN-BUILDER SHALL FOLLOW THE REQUIREMENTS OF THE CDB ROOFING HANDBOOK.
- THE DESIGN-BUILDER SHALL UTILIZE ONE OF THE CDB ACCEPTED MANUFACTURERS FOR PRE-ENGINEERED METAL BUILDINGS.
- THE FLOOR PLANS OF THE BUILDING SHOWN IN THESE BRIDGING DOCUMENTS HAVE BEEN APPROVED BY THE USING AGENCY.
- THE LOCATION OF THE BUILDING ON THE SITE HAS BEEN COORDINATED WITH VEHICLE TURNING RADIUS AND CONSTRUCTION PHASING.
- THE DESIGN-BUILDER IS ALLOWED TO DEVIATE OR SUGGEST ALTERNATE MATERIALS FOR THE BUILDING CONSTRUCTION IF IT BENEFITS THE BUDGET OR SCHEDULE.
- ALL BUILDING SYSTEMS AND MATERIALS INCORPORATED INTO THE PROJECT MUST HAVE AN AVERAGE LIFE SPAN OF 50 YEARS OR LONGER.
- THERE ARE NO SOLE SOURCED MATERIALS OR EQUIPMENT REFLECTED IN THESE BRIDGING DOCUMENTS. HOWEVER, THE VORTEX RESTRICTOR SHOWN ON C505 WILL BE LIMITED TO TWO MANUFACTURERS IN ORDER TO COMPLY WITH MWRD REQUIREMENTS. CDB APPROVAL FOR A DUAL SOURCE FOR THIS PRODUCT IS REQUIRED.
- A LEED WAIVER HAS BEEN ISSUED FROM CDB FOR THIS PROJECT.
- UTILITY REBATES SHOULD BE AVAILABLE FOR THIS PROJECT. THE DRAWINGS HAVE BEEN SHARED WITH THE REBATE PROGRAM MANAGERS. THE DESIGN-BUILDER IS TO FOLLOW UP AND COMPLETE THE REBATE PROCESS.

GENERAL DEMOLITION NOTES

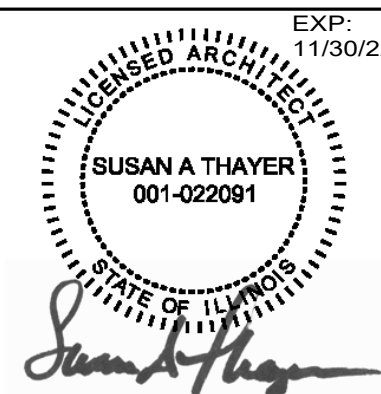
- COORDINATING CONTRACTOR SHALL SUBMIT A SCHEDULE INDICATING THE SEQUENCE OF OPERATIONS FOR SELECTIVE DEMOLITION WORK TO CDB FOR REVIEW PRIOR TO START OF WORK, INCLUDING COORDINATION WITH IDOT'S CONTINUING OCCUPATION OF PORTIONS OF EXISTING BUILDING.
- COORDINATING CONTRACTOR TO PROVIDE ALL DUMPSTERS REQUIRED FOR CONSTRUCTION WASTE. CONTRACTORS SHALL RECYCLE AS MUCH WASTE MATERIAL AS POSSIBLE.
- ALL MATERIAL REMOVED AS PART OF THIS WORK SHALL BECOME PROPERTY OF CONTRACTOR AND LEGALLY DISPOSED EXCEPT IDENTIFIED BY THE USING AGENCY.
- ANY EXISTING COMPONENT REMOVED OR DAMAGED TO ALLOW NEW WORK TO OCCUR MUST BE REINSTALLED OR REPLACED AT THE COMPLETION OF NEW WORK UNLESS NOTED OTHERWISE. THE COORDINATING CONTRACTOR SHALL INCLUDE THE SATISFACTORY PATCHING AND FINISH OF ALL SCARS RELATED TO THE DEMOLITION OPERATION.
- COORDINATING CONTRACTOR SHALL PROMPTLY REPAIR DAMAGES TO ADJACENT FACILITIES CAUSED BY DEMOLITION WORK.
- DEMOLISH ALL ITEMS NOTED AND IN SCOPE OF WORK NOTES. CONTRACTOR IS RESPONSIBLE FOR COMPLETE REMOVAL OF ALL ITEMS AS INDICATED IN THE CONSTRUCTION DOCUMENTS.
- ITEMS OF CONSTRUCTION SHOWN AND NOTED TO BE REMOVED SHALL REPRESENT SIMILAR CONDITIONS AND CONSTRUCTION UNLESS NOTED OTHERWISE.
- PROVIDE, ERECT, AND MAINTAIN TEMPORARY WORK INCLUDING, BUT NOT LIMITED TO BARRICADES, WARNING SIGNS, ETC. AS REQUIRED FOR PROPER PROTECTION OF THE PUBLIC AND PROPERTY DURING REMOVAL OPERATIONS.
- CONTRACTOR MUST NOTIFY CDB/IDOT IN WRITING OF ANY DISCREPANCIES ON THE DRAWINGS OR THE UNCOVERING OF HIDDEN CONDITIONS WHICH MAY AFFECT THE WORK.
- NO BURNING OF MATERIAL ON THE PREMISES WILL BE PERMITTED.
- UPON COMPLETION OF REMOVAL OF WORK, REMOVE ALL TOOLS, MATERIALS, APPARATUS, AND RUBBISH OF ANY SORT. THE JOB SITE MUST BE LEFT CLEAN.
- LIGHTING, GRAPHICS, COMMUNICATIONS, AND FIBER OPTICS SYSTEMS MUST BE MAINTAINED DURING CONSTRUCTION EITHER BY USING ORIGINAL, TEMPORARY, OR NEW SYSTEMS.
- SALVAGED ITEMS REQUESTED BY THE USING AGENCY MUST BE CAREFULLY REMOVED, KEPT FREE OF DAMAGE, AND DELIVERED TO THE DESIGNATED STORAGE AREA. MATERIALS AND/OR ITEMS REMOVED AND NOT DESIGNATED TO BECOME THE PROPERTY OF THE USING AGENCY WILL BECOME PROPERTY OF THE CONTRACTOR AND REMOVED FROM SITE.
- ANY EXISTING COMPONENT REMOVED OR DAMAGED TO ALLOW WORK TO OCCUR MUST BE REINSTALLED OR REPLACED AT THE COMPLETION OF WORK UNLESS NOTED OTHERWISE.
- REMOVE ALL EXISTING PLUMBING, AND ELECTRICAL SYSTEMS NOT UTILIZED IN THE NEW CONSTRUCTION. REMOVED UTILITIES MUST BE REMOVED TO THE SOURCE AND CAPPED AS REQUIRED BY CODE.
- DO NOT CUT INTO, REMOVE, OR ALTER ANY EXISTING STRUCTURAL MEMBER UNLESS NOTED OTHERWISE.
- SUBMIT WRITTEN REQUEST IN ADVANCE OF CUTTING OR ALTERING ELEMENTS WHICH AFFECT: A. STRUCTURAL INTEGRITY OF ELEMENT, B. INTEGRITY OF WEATHER-EXPOSED ELEMENTS OR MOISTURE RESISTANT ELEMENTS.
- CONTRACTOR SHALL SAWCUT SIDEWALKS IN A CLEAN AND STRAIGHT MANNER AT THE LIMITS OF THE DESIGNATED REMOVAL.
- CONTRACTOR SHALL SAWCUT ALL MASONRY WALLS, CONCRETE FLOORS, AND CONCRETE WALLS IN A CLEAN AND STRAIGHT MANNER, AT THE LIMITS OF THE DESIGNATED REMOVAL.
- REMOVE DEBRIS AND ABANDONED ITEMS FROM THE CONSTRUCTION AREA ON A DAILY BASIS.
- CONTRACTOR TO PERFORM DEMOLITION SCOPE OF WORK AS REQUIRED TO COMPLETE NEW CONSTRUCTION. COORDINATE ARCHITECTURAL DEMOLITION WITH CIVIL, STRUCTURAL, ELECTRICAL, AND PLUMBING DEMOLITION SCOPE OF WORK.
- REFER TO PLUMBING DRAWINGS FOR THE REMOVAL AND/OR REUSE OF PLUMBING COMPONENTS.
- REFER TO ELECTRICAL DRAWINGS FOR THE REMOVAL AND/OR REUSE OF ELECTRICAL COMPONENTS.
- ALL ITEMS OF DEMOLITION NOT INDICATED TO BE SAVED SHALL BE REMOVED IN THEIR ENTIRETY INCLUDING ALL ASSOCIATED MACHINERY, FRAMING, ANCHORS, HOUSING, ETC. AND BE DISPOSED OF ON A DAILY BASIS TO AVOID ACCUMULATION OF ANY DEBRIS ON SITE.
- ANY EXISTING COMPONENT REMOVED OR DAMAGED TO ALLOW NEW WORK TO OCCUR MUST BE REINSTALLED OR REPLACED AT THE COMPLETION OF THE NEW WORK UNLESS NOTED OTHERWISE.
- CONTRACTOR SHALL BE RESPONSIBLE FOR PROTECTION OF NEW WORK. ANY WORK DAMAGED FOR ANY REASON SHALL BE REPLACED AT NO COST TO CDB/IDOT.
- ANSI A-10.6 "SAFETY REQUIREMENTS FOR DEMOLITION" WILL GOVERN EXCEPT AS OTHERWISE MODIFIED HEREIN. WHERE THE REQUIREMENTS SPECIFIED HEREIN OR CONTAINED IN THE ANSI STANDARD DIFFER FROM OTHER APPLICABLE RULES, REGULATIONS, AND CODES, THE MORE STRINGENT REQUIREMENTS SHALL GOVERN THE WORK UNDER THIS CONTRACT.


GENERAL CONSTRUCTION NOTES


- ALL DIMENSIONS ARE TO FACE OF PARTITIONS, COLUMN CENTERLINE, OR FINISHED FACE OF EXTERIOR WALL UNLESS NOTED OTHERWISE.
- ALL DIMENSIONS SHALL BE VERIFIED IN THE FIELD BEFORE PROCEEDING WITH ANY WORK. CDB/IDOT SHALL BE NOTIFIED OF ANY DISCREPANCIES OR CORRECTIONS.
- PROVIDE ACCESS PANELS AS REQUIRED BY APPLICABLE CODES AND AS REQUIRED FOR MECHANICAL AND ELECTRICAL EQUIPMENT. REVIEW LOCATIONS WITH CDB/IDOT AND ARCHITECT.
- ALL DISSIMILAR METALS SHALL BE EFFECTIVELY ISOLATED.
- THE CONTRACTOR SHALL COORDINATE ALL MECHANICAL AND ELECTRICAL FLOOR SLEEVES AND WALL SLEEVES, EMBEDDED CONDUIT, AND MECHANICAL DUCTWORK WITH MECHANICAL, PLUMBING, ELECTRICAL, AND ARCHITECTURAL DRAWINGS WITH CORRESPONDING DISCIPLINES.
- ALL PIPES, CONDUITS, AND DUCTWORK THAT PENETRATE WALL, FLOOR, OR ROOF SLABS SHALL BE INSTALLED IN A MANNER THAT WILL PRESERVE THE WATER TIGHTNESS OF SUCH WALL OR SLABS IN THE BUILDING.
- ALL EXTERIOR JOINTS AROUND WINDOWS, DOORS, FRAMES, METAL PANELS, BETWEEN WALLS AND ROOF, BETWEEN WALL PANELS, AND AT PENETRATIONS OF UTILITIES THROUGH THE BUILDING ENVELOPE SHALL BE SEALED, CAULKED, OR WEATHER-STRIPPED TO PREVENT WATER OR AIR LEAKAGE/PENETRATION.
- THE FINISH FLOOR ELEVATION FOR THE NEW MAINTENANCE FACILITY BUILDING IS SET SO THAT 0'-0" = +612.00. GENERAL CONTRACTOR TO COORDINATE WITH STRUCTURAL AND CIVIL SHEETS. REFERENCE CIVIL DRAWINGS FOR BENCHMARKS.
- CONTRACTOR SHALL BE RESPONSIBLE FOR PROTECTION OF NEW WORK. ANY WORK DAMAGED FOR ANY REASON SHALL BE REPLACED AT NO COST TO CDB/IDOT.
- PRIOR TO STARTING CONSTRUCTION, THE GENERAL CONTRACTOR SHALL BE RESPONSIBLE FOR VERIFYING THAT ALL REQUIRED PERMITS AND APPROVALS HAVE BEEN OBTAINED. NEITHER CONSTRUCTION NOR FABRICATION OF ANY ITEM SHALL BEGIN UNTIL THE CONTRACTOR HAS RECEIVED ALL PERMITS AND ANY OTHER APPROVALS FROM GOVERNMENTAL AGENCIES OR OTHER REGULATORY AUTHORITIES HAVING JURISDICTION OVER THE PROJECT. FAILURE OF THE CONTRACTOR TO FOLLOW THIS PROCEDURE SHALL CAUSE THE CONTRACTOR TO ASSUME FULL RESPONSIBILITY FOR ANY SUBSEQUENT MODIFICATION OF THE WORK MANDATED BY REGULATORY AUTHORITY.
- ALL GYPSUM BOARD TO BE 5/8" TYPE "X" UNLESS NOTED OTHERWISE.
- CONTRACTOR SHALL INSTALL ROUGH BLOCKING OR WOOD NAILERS DURING THE ROUGH FRAMING STAGE OF CONSTRUCTION AS REQUIRED FOR PROPERLY SECURING SHELVING, LIGHTING AND ELECTRICAL FIXTURES, WALL MOUNTED EQUIPMENT, MILLWORK, APPLIED DECORATIVE TREATMENTS, AND HANDRAIL BRACKETS.
- EXPOSED ELECTRICAL ITEMS INCLUDING, BUT NOT LIMITED TO, CONDUIT HANGERS AND FITTINGS SHALL BE PAINTED TO MATCH EXISTING ADJACENT SURFACES WHERE NOT CONCEALED.
- CONTRACTOR TO REMOVE ANY GRAFFITI WITHIN 24 HOURS DURING CONSTRUCTION.
- CONTRACTOR TO BALANCE HVAC SYSTEM FOR ADEQUATE AIR DISTRIBUTION WITHIN ALL CONDITIONED AREAS.
- CONTRACTOR SHALL SAWCUT SIDEWALKS IN A CLEAN AND STRAIGHT MANNER AT THE LIMITS OF THE DESIGNATED REMOVAL.
- DETAILS SHOWN ARE INTENDED TO BE INDICATIVE OF THE PROFILES AND TYPE OF DETAILING REQUIRED FOR THE WORK. CONDITIONS NOT COVERED BY SPECIFIC DETAILS ARE SIMILAR IN CHARACTER AND QUALITY TO THOSE DETAILS AND MUST MEET SPECIFIED DESIGN CRITERIA.
- DETAILS SHOWN MAY NOT GRAPHICALLY REPRESENT ALL COMPONENTS NECESSARY TO COMPLETE THE TOTAL SYSTEM. THE CONTRACTOR MUST BE RESPONSIBLE TO COORDINATE ALL OF THE REQUIREMENTS SHOWN ON THE DRAWINGS WITH THOSE STATED IN THE APPLICABLE SPECIFICATIONS AND PROJECT NOTES TO PROVIDE THE COMPLETE SYSTEM.
- CONTRACTOR WILL BE SOLELY RESPONSIBLE FOR QUALITY CONTROL, CONSTRUCTION MEANS, METHODS, TECHNIQUES, SEQUENCES, PHASING OR PROCEDURES, SAFETY PRECAUTIONS, AND PROGRAMS IN CONNECTION WITH THE WORK.
- CDB/IDOT WILL NOT BE RESPONSIBLE FOR, NOR WILL HAVE ANY CONTROL OVER OR CHARGE OF, CONSTRUCTION MEANS, METHODS, TECHNIQUES, SEQUENCES, PHASING, OR PROCEDURES OF SAFETY PRECAUTIONS AND PROGRAMS IN CONNECTION WITH THE WORK, NOR WILL BE RESPONSIBLE FOR THE CONTRACTOR'S FAILURE TO CARRY OUT THE WORK IN ACCORDANCE WITH THE REQUIREMENTS OF THE CONTRACT DOCUMENTS. CDB/IDOT WILL NOT BE RESPONSIBLE FOR, NOR HAVE CONTROL OR CHARGE OVER, THE ERRORS OR OMISSIONS OF THE CONTRACTOR, SUBCONTRACTORS, THEIR AGENTS, EMPLOYEES, OR ANY OTHER PERSON PERFORMING ANY OF THE WORK.
- INSTALL GYPSUM BOARD CONSTRUCTION JOINTS AT MAXIMUM INTERVALS OF 30'-0".
- CDB/IDOT EXPRESSLY DISCLAIMS ANY RESPONSIBILITY ARISING FROM ANY UNAUTHORIZED USE OF THESE CONTRACT DOCUMENTS. ANY AUTHORIZATION MUST BE IN WRITING. THE CONTRACT DRAWINGS MAY HAVE BEEN REPRODUCED AT A SIZE DIFFERENT THAN ORIGINALLY DRAWN. DO NOT SCALE DRAWINGS.
- THE CONTRACTOR SHALL BE RESPONSIBLE FOR COORDINATION WITH IDOT REGARDING ALL NEW AND/OR REMEDIAL CONSTRUCTION INCLUDING, BUT NOT LIMITED TO, SITEWORK, OTHER SITE BUILDINGS, ETC. THAT IDOT MAY HAVE IN PROGRESS WITHIN THE SAME PERIOD.
- THE CONTRACTOR SHALL REVIEW AND HAVE COMPLETE COMMAND OF THE VARIOUS PHASES OF THE CONSTRUCTION WORK PLUS A TOTAL UNDERSTANDING OF THE UNIQUE MANPOWER AND SUPPLY SCHEDULE REQUIREMENTS SPECIFIC TO THE SITE. CONTRACTOR MUST COORDINATE ALL CONSTRUCTION-RELATED ACTIVITIES WITH MAINTENANCE SCHEDULES, OPERATING REQUIREMENTS, AND ANY RESULTING HAZARDOUS CONDITIONS.
- THE CONTRACTOR SHALL COORDINATE AND CONFIRM WITH IDOT THE HOURS OF CONSTRUCTION AND MAINTENANCE YARD OPERATIONS FOR THE ENTIRE SCHEDULE OF THE WORK.
- CONTRACTOR SHALL BE RESPONSIBLE FOR SECURING THE JOB SITE AND THE PROTECTION OF THE GENERAL PUBLIC FROM ALL POSSIBLE HAZARDS OF THE ENTIRE CONSTRUCTION SITE.
- ANY DETAILS, SYSTEMS, OR MATERIALS (I.E. ARCHITECTURAL, STRUCTURAL, MECHANICAL, ETC.) WHICH ARE IDENTIFIED TO BE CHANGED OR SUBSTITUTED MUST BE FIRST REVIEWED AND APPROVED PRIOR TO THE PREPARATION AND SUBMITTAL OF SHOP DRAWINGS. CDB/IDOT RESERVES THE RIGHT TO REJECT SUBSTITUTIONS. THE CONTRACTOR IS RESPONSIBLE FOR ADDED JOB COSTS DUE TO HIS SUBSTITUTIONS IMPACTED ON OTHER TRADES.
- ALL EXTERIOR FERROUS METAL WORK LOCATED IN EXTERIOR OR IN NON-CONDITIONED INTERIOR SPACES MUST BE GALVANIZED STEEL, MINIMUM G60 UNLESS NOTED OTHERWISE, UNLESS FERROUS METAL IS SCHEDULED TO BE PRE-FINISHED OR PAINTED PER PAINTING SPECIFICATIONS. REFER TO THE TECHNICAL SPECIFICATIONS FOR ADDITIONAL INFORMATION AND COORDINATION OF THE WORK. IN THE EVENT OF DISCREPANCIES BETWEEN DRAWINGS AND SPECIFICATIONS, THE MOST STRINGENT OR COSTLY SHALL BE PROVIDED PER THE CONTRACT.
- THE CONTRACTOR SHALL ASSURE ITSELF THAT NO HAZARDOUS MATERIALS ARE HANDLED OR DISTRIBUTED. IF HAZARDOUS MATERIALS ARE ENCOUNTERED, IT MUST BE BROUGHT TO THE IMMEDIATE ATTENTION OF CDB/IDOT. ENVIRONMENTAL INSPECTION REPORTS ARE AVAILABLE FROM IDOT UPON REQUEST.
- ALL NEW GUARDRAILS AND HANDRAILS MUST MEET OSHA, NIOSH, AND ADA GUIDELINES, 200 PSF LIVE LOAD SAFETY CODE REQUIREMENTS, AND CODE-PRESCRIBED SIMULTANEOUS HORIZONTAL AND VERTICAL HANDRAIL REQUIREMENTS.
- THE CONTRACTOR SHALL BE RESPONSIBLE FOR COORDINATION WITH WORK NOTED "(NIC)", IF ANY, WHICH IS BEING PERFORMED UNDER SEPARATE CONTRACT WHERE IT INTERFACES WITH OR AFFECTS WORK UNDER THIS CONTRACT.
- DRAWINGS ARE TO BE ISSUED TO THE SUBCONTRACTORS BY THE CONTRACTOR IN COMPLETE SETS SO THAT THE EXTENT AND COORDINATION OF WORK IS MADE POSSIBLE.
- THE CONTRACTOR SHALL BE SOLELY RESPONSIBLE FOR THE ACCURATE PLACEMENT AND CONDITIONS OF THE WORK.
- CONTRACTOR'S DUMPSTER PLACEMENT LOCATIONS MUST BE APPROVED BY THE PROJECT REPRESENTATIVE.
- GENERAL CONTRACTOR'S PRIMARY RESPONSIBILITY IN ALL PHASES OF THE PROJECT IS SAFETY. THE RESPONSIBILITY FOR SAFETY INCLUDES THE PATRONS, CONTRACTOR'S EMPLOYEES, AND ANY PERSON(S) WHO MAY ENTER UPON OR BE PROXIMATE TO THE WORK AREA, WHETHER OR NOT WORK IS IN PROGRESS.
- CONTRACTOR'S WORK SHALL NOT INTERFERE WITH IDOT OPERATIONS.
- CONSTRUCTION SITE TO BE FULLY BARRICADED AND LOCKED. MAINTAIN BARRICADE AND SIGNAGE DURING CONSTRUCTION.
- CONTRACTOR SHALL PROVIDE TOILET FACILITIES FOR HIS OWN WORKERS.
- NO WORK WILL BE ALLOWED AT THE SITE BEFORE A CONSTRUCTION PHASING PLAN WITH MATERIAL/EQUIPMENT STAGING PLAN IS APPROVED BY CDB/IDOT.

NOTE: CONTRACTOR SHALL OBTAIN AND VERIFY ALL DIMENSIONS AND CONDITIONS AT JOB SITE AND BE FULLY RESPONSIBLE FOR SAME. BRIDGING DOCUMENTS, DRAWINGS AND NARRATIVES ARE PROVIDED FOR DESIGN INTENT. THE DESIGN-BUILD ENTITY IS RESPONSIBLE FOR THE COMPLETE DESIGN OF A PROJECT THAT ADHERES TO ALL SCOPE OF WORK REQUIREMENTS, CODES, STATE AND FEDERAL REGULATIONS AND GUIDELINES.

REVISIONS			DRAWN	PREPARED	EXP.
NO.	DATE	REMARKS	CMM		11/30/22
			TRACED	APPROVED	
			CHECKED	APPROVED	
			ST		
1	12/22/20	AMENDMENT 1			







State of Illinois

JB PRITZKER, GOVERNOR

Illinois Capital Development Board

GENERAL NOTES

STEVENSON YARD MAINTENANCE FACILITY
BRIDGING DOCUMENTS (NOT FOR CONSTRUCTION)
ILLINOIS DEPARTMENT OF TRANSPORTATION
MCCOOK, COOK COUNTY, ILLINOIS 60525

PROJECT NO.
630-128-005

DATE
05/06/2020

SHEET NO.
G0-1

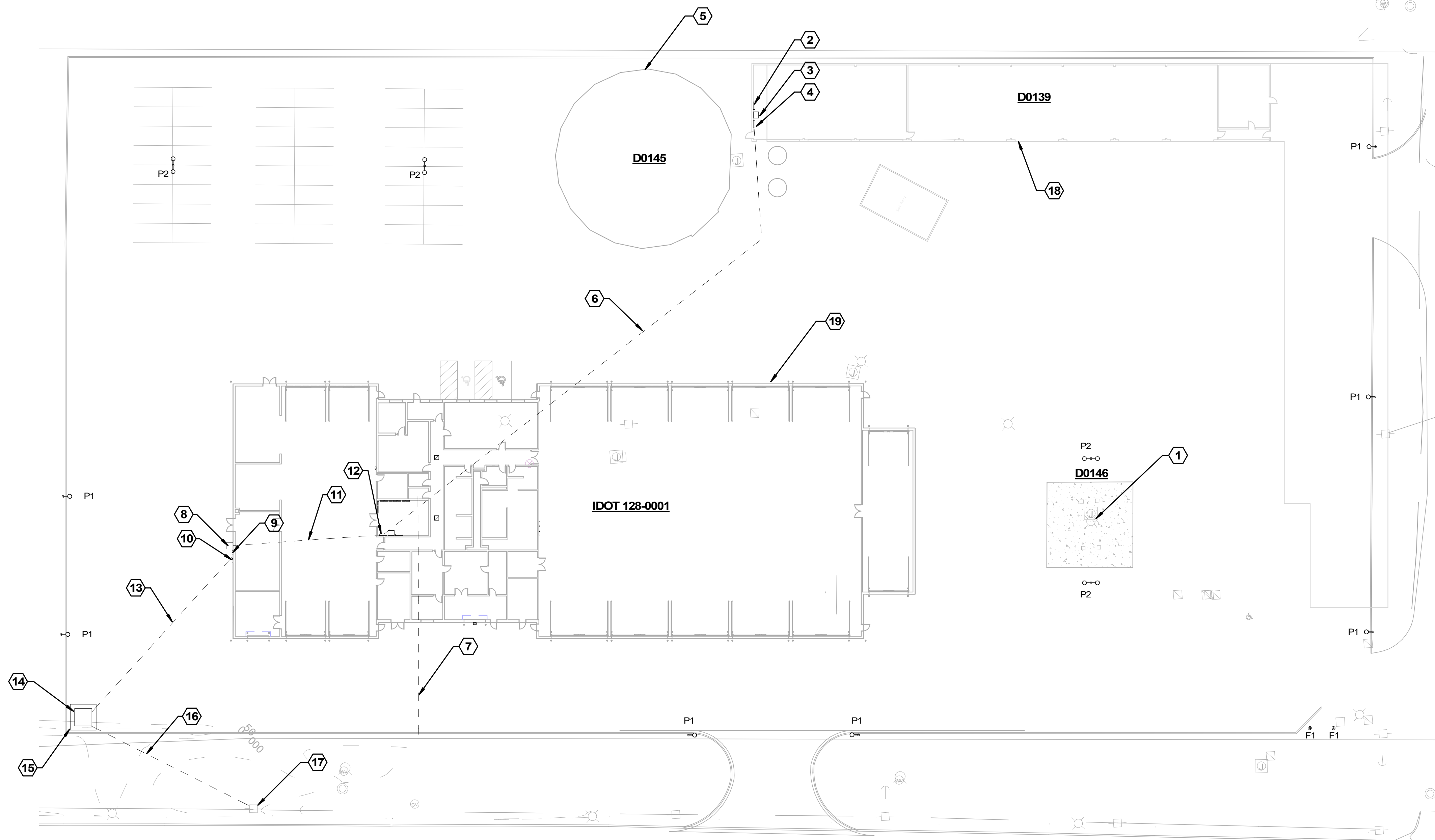
OF () SHEETS

NOTES (THIS SHEET)

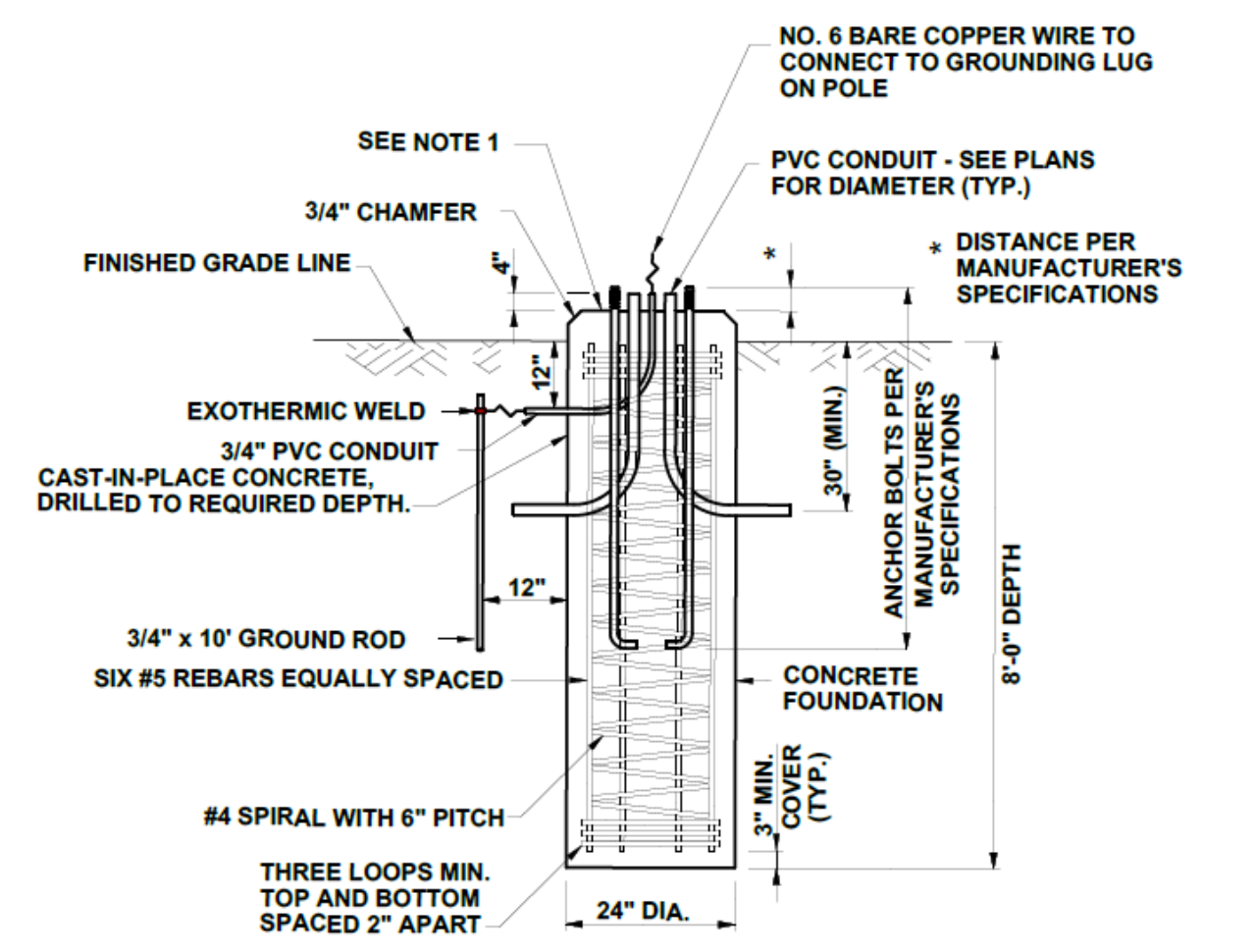
- SEE SHEET E0.01 FOR ELECTRICAL GENERAL NOTES, SYMBOLS, AND ABBREVIATIONS.
- SEE LIGHTING CONTROL SCHEDULE IN SPECIFICATIONS FOR CONTROL OF SITE LIGHTING.

KEYNOTES (THIS SHEET)

- REFEED EXISTING FUEL PUMPS FROM PANEL RP-C AS REQUIRED. PROVIDE SEAL-OFFS PER NATIONAL ELECTRICAL CODE.
- PROVIDE PANEL SB. SEE ONE-LINE DIAGRAM.
- PROVIDE TRANSFORMER XF-SB. SEE ONE-LINE DIAGRAM.
- PROVIDE DISCONNECT SWITCH AT TRANSFORMER XF-SB. SEE ONE-LINE DIAGRAM.
- REFEED EXISTING SALT DOME CIRCUITS FROM PANEL SB AS REQUIRED.
- PROVIDE BURIED FEEDER TO DISCONNECT SWITCH AT TRANSFORMER XF-SB. SEE ONE-LINE DIAGRAM.
- PROVIDE 4" EMPTY CONDUIT WITH PULL STRING TO PROPERTY LINE FOR DATA/FIBER SERVICE.
- PROVIDE MANUAL TRANSFER SWITCH WITH QUICK CONNECTS FOR CONNECTION OF PORTABLE GENERATOR. SEE ONE-LINE DIAGRAM.
- PROVIDE MAIN SERVICE BREAKER. SEE ONE-LINE DIAGRAM.
- PROVIDE C/T CABINET AND METER BASE PER UTILITY COMPANY REQUIREMENTS. SEE ONE-LINE DIAGRAM.
- PROVIDE BURIED FEEDER TO DISTRIBUTION PANEL MDP. SEE ONE-LINE DIAGRAM.
- PROVIDE DISTRIBUTION PANEL MDP. SEE ONE-LINE DIAGRAM.
- PROVIDE BURIED SERVICE ENTRANCE CONDUIT AND WIRING. SEE ONE-LINE DIAGRAM.
- PAD MOUNTED TRANSFORMER BY UTILITY COMPANY. COORDINATE ENTIRE SERVICE ENTRANCE WORK WITH COMMONWEALTH EDISON COMPANY.
- PROVIDE CONCRETE PAD PER UTILITY COMPANY REQUIREMENTS FOR TRANSFORMER. COORDINATE ENTIRE SERVICE ENTRANCE WORK WITH COMMONWEALTH EDISON COMPANY.
- PROVIDE BURIED PRIMARY CONDUIT WITH PULL STRING (CABLES BY UTILITY). SEE ONE-LINE DIAGRAM. COORDINATE ENTIRE SERVICE ENTRANCE WORK WITH COMMONWEALTH EDISON COMPANY.
- EXISTING UTILITY POLE. CONFIRM LOCATION WITH UTILITY. COORDINATE ENTIRE SERVICE ENTRANCE WORK WITH COMMONWEALTH EDISON COMPANY.
- EXISTING BUILDING. SEE PLANS.
- PROPOSED BUILDING. SEE PLANS.



1 SITE LIGHTING & POWER PLAN
N.T.S.



2 DETAIL - LIGHT POLE CONCRETE FOUNDATION
NOT TO SCALE

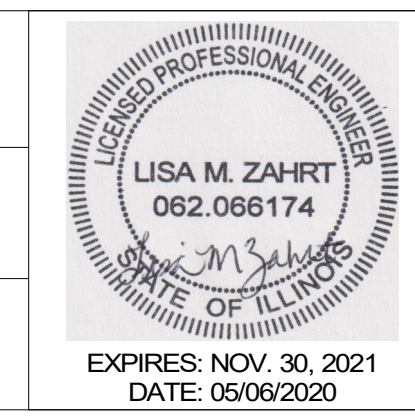
LIGHTNING PROTECTION SYSTEM GENERAL NOTES

- PROVIDE A LIGHTNING PROTECTION SYSTEM FOR BUILDING (IDOT 128-0001).
- THE LIGHTNING PROTECTION SYSTEM SHALL BEAR THE UL MASTER LABEL FOR PROTECTION OF STRUCTURE 61. SEE SPECIFICATION SECTION 26 41 00 FOR ADDITIONAL INFORMATION.
- ALL ALUMINUM DOWN CONDUCTORS SHALL BE ROUTED CONCEALED WITHIN WALL SPACES OF THE STRUCTURE. DOWN CONDUCTORS SHALL BE ROUTED IN PVC, SCHEDULE 40 CONDUIT. WHERE A DOWN CONDUCTOR CONDUIT MUST PENETRATE THE ROOF PROVIDE A WEATHERHEAD FITTING ON THE PVC. SEAL ALL CONDUIT PENETRATIONS WEATHERTIGHT.
- CONNECT EACH DOWN CONDUCTOR TO A DEDICATED GROUND ROD. PROVIDE ONE UNDERGROUND CONNECTION TO THE STRUCTURE'S ELECTRICAL GROUND SYSTEM.
- THE CONTRACTOR SHALL COORDINATE WITH CDB'S REPRESENTATIVE AND RECEIVE APPROVAL ON ALL AIR TERMINAL LOCATIONS AND ROUTING OF INTERCONNECTING CONDUCTORS AND DOWN CONDUCTORS PRIOR TO INSTALLATION OF THE LIGHTNING PROTECTION SYSTEM.

NOTE: CONTRACTOR SHALL OBTAIN AND VERIFY ALL DIMENSIONS AND CONDITIONS AT JOB SITE AND BE FULLY RESPONSIBLE FOR SAME. BRIDGING DOCUMENTS, DRAWINGS AND NARRATIVES ARE PROVIDED FOR DESIGN INTENT. THE DESIGN-BUILD ENTITY IS RESPONSIBLE FOR THE COMPLETE DESIGN OF A PROJECT THAT ADHERES TO ALL SCOPE OF WORK REQUIREMENTS, CODES, STATE AND FEDERAL REGULATIONS AND GUIDELINES.

REVISIONS		
NO.	DATE	REMARKS
1	12/22/20	AMENDMENT #1

DRAWN TAS	PREPARED
TRACED	APPROVED
CHECKED	APPROVED



ClarkDietz
DESIGN FIRM REGISTRATION No. 184-000450
118 S. Clinton St. Suite 570
Chicago, IL 60661
PHONE: 312.648.9900 www.clarkdietz.com

MULLER2
700 N Sangamon
Chicago, IL 60642
312.432.4180
312.432.4184
© 2019, Muller & Muller, Ltd.
DESIGN FIRM REG. #184-003047

Capital Development Board
Building a Better Illinois

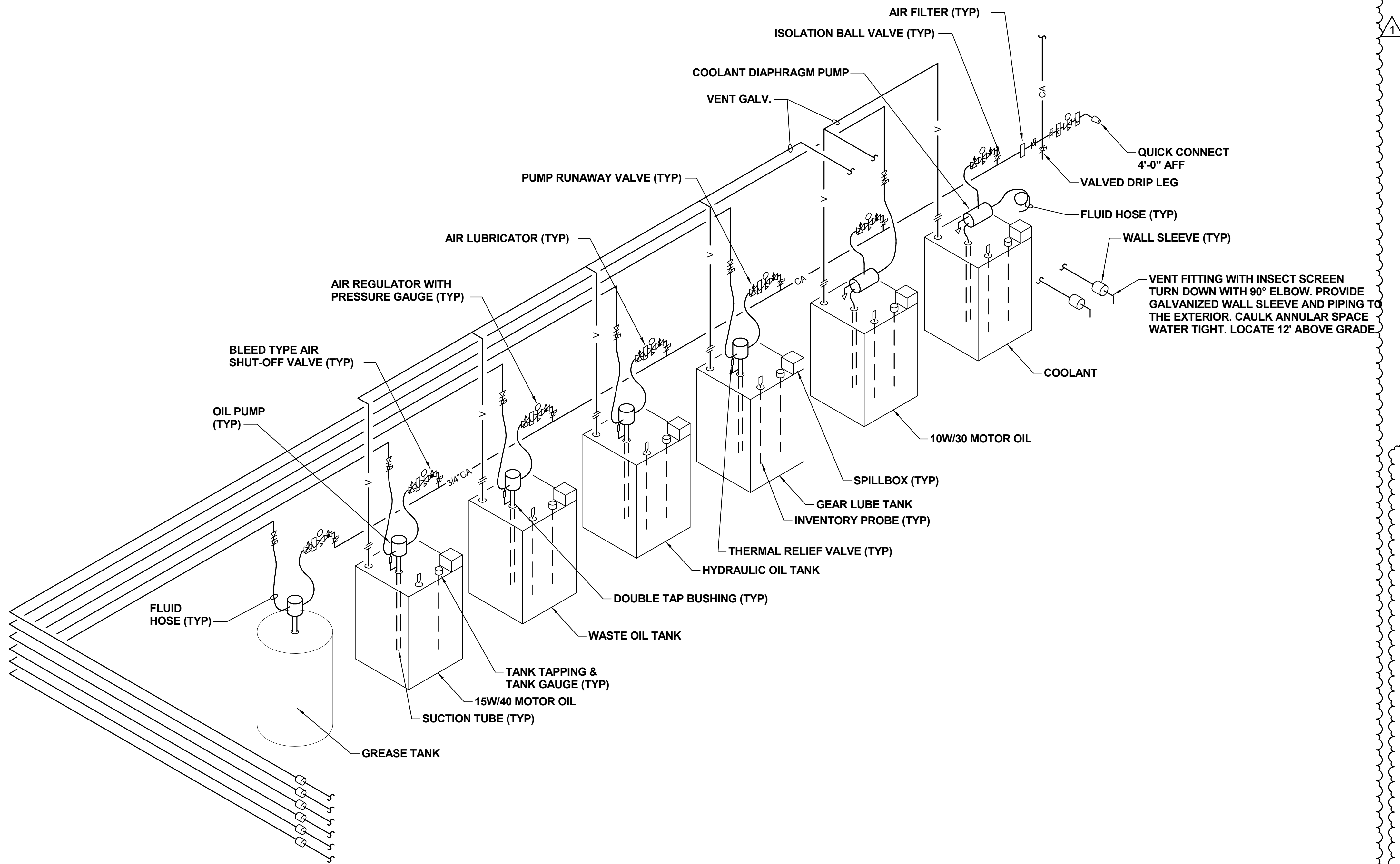
State of Illinois
JB PRITZKER, GOVERNOR
Illinois Capital Development Board

SITE LIGHTING & POWER PLAN
STEVENSON YARD MAINTENANCE FACILITY
BRIDGING DOCUMENTS (NOT FOR CONSTRUCTION)
ILLINOIS DEPARTMENT OF TRANSPORTATION
MCCOOK, COOK COUNTY, ILLINOIS 60525

PROJECT NO. 630-128-005
DATE 05/06/2020
SHEET NO. **E1.10**
OF () SHEETS

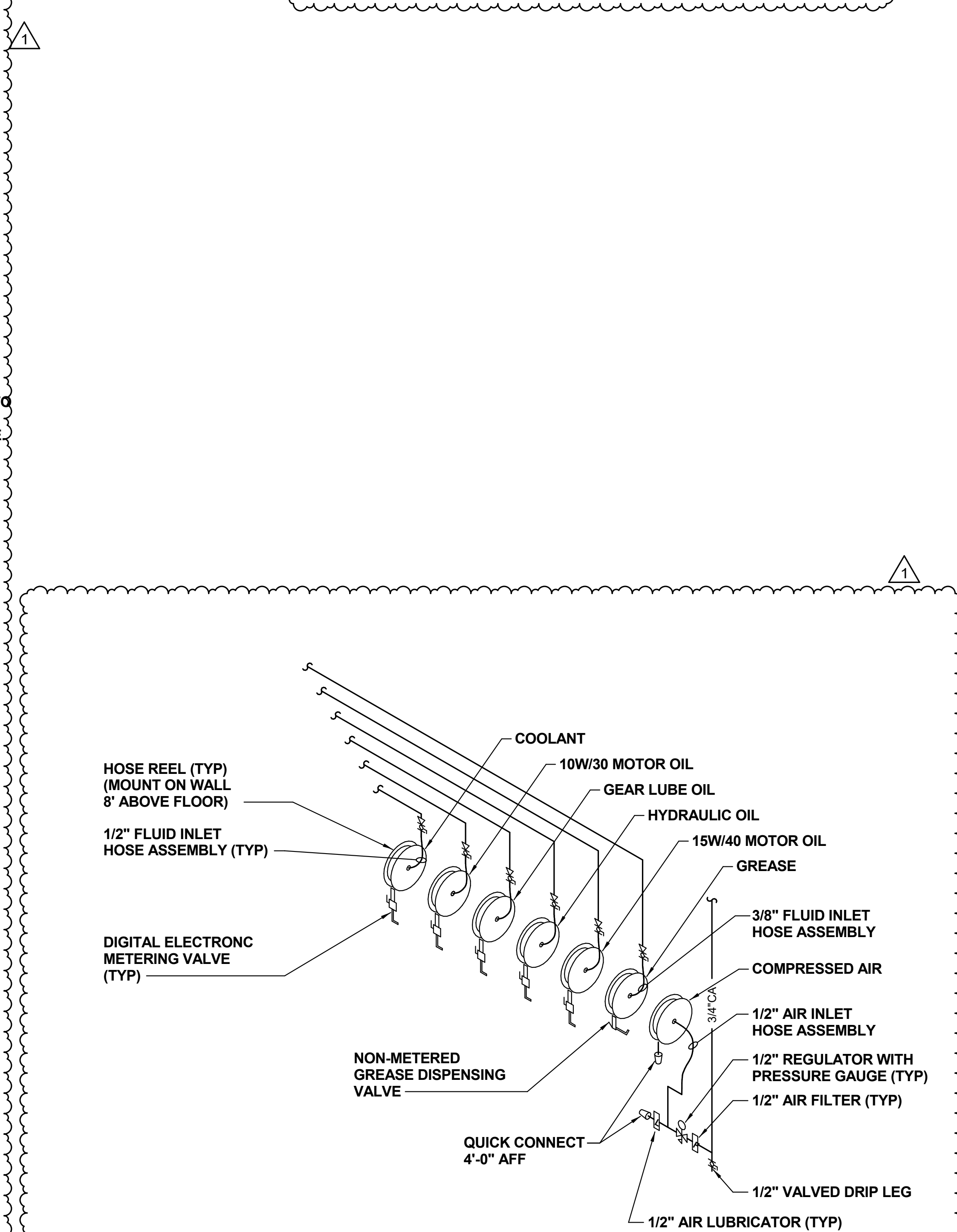
LUBE OIL SYSTEM GENERAL NOTES

1. APPROXIMATE TANK SIZES ARE LISTED BELOW.
 - A. 15W/40 OIL - 400 GALLONS
 - B. WASTE OIL - 400 GALLONS
 - C. HYDRAULIC OIL - 400 GALLONS
 - D. GEAR LUBE - 275 GALLONS
 - E. 10W/30 OIL - 275 GALLONS
 - F. COOLANT - 165 GALLONS
 - G. GREASE - 400 POUNDS



LUBE OIL SYSTEM DIAGRAM

1 N.T.S.



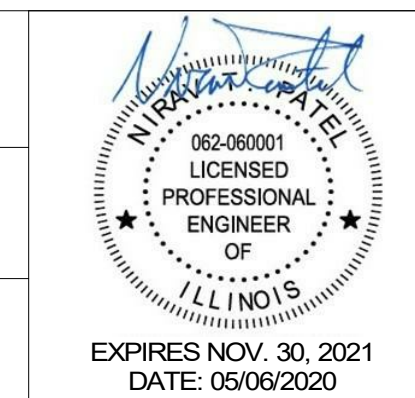
LUBE RACK PIPING DETAIL

2 N.T.S.

NOTE: CONTRACTOR SHALL OBTAIN AND VERIFY ALL DIMENSIONS AND CONDITIONS AT JOB SITE AND BE FULLY RESPONSIBLE FOR SAME. BRIDGING DOCUMENTS, DRAWINGS AND NARRATIVES ARE PROVIDED FOR DESIGN INTENT. THE DESIGN-BUILD ENTITY IS RESPONSIBLE FOR THE COMPLETE DESIGN OF A PROJECT THAT ADHERES TO ALL SCOPE OF WORK REQUIREMENTS, CODES, STATE AND FEDERAL REGULATIONS AND GUIDELINES.

REVISIONS		
NO.	DATE	REMARKS
1	12/22/20	AMENDMENT #1

DRAWN	PREPARED
AJM	
TRACED	APPROVED
CHECKED	APPROVED
NTP	



Clark Dietz
 DESIGN FIRM REGISTRATION No. 184-000450
 118 S. Clinton St. Suite 570
 Chicago, IL 60661
 PHONE: 312.648.9900 www.clarkdietz.com

MULLER2
 700 N Sangamon
 Chicago, IL 60642
 312.432.4180
 312.432.4184
 © 2019, Muller & Muller, Ltd.
 DESIGN FIRM REG. #184-003047



State of Illinois
JB PRITZKER, GOVERNOR
Illinois Capital Development Board

LUBE / OIL SYSTEM DETAILS

STEVENSON YARD MAINTENANCE FACILITY
 BRIDGING DOCUMENTS (NOT FOR CONSTRUCTION)
 ILLINOIS DEPARTMENT OF TRANSPORTATION
 MCCOOK, COOK COUNTY, ILLINOIS 60525

PROJECT NO. 630-128-005
DATE 05/06/2020
SHEET NO. P6.02
OF () SHEETS