



Illinois Capital Development Board
Art-in-Architecture Program

Request for Qualifications

for

Illinois Environmental Protection Agency

Springfield, Illinois

Project Number: 250-000-022

CALL TO ARTISTS

The Art-in-Architecture Program of the Capital Development Board is pleased to announce a Request for Qualifications (RFQ) to Illinois professional artists to create permanent original public art for the Illinois Environmental Protection Agency building in Springfield, IL.

Final Deadline: Friday, July 21, 2023

4:30 P.M.

APPLYING BEFORE THE FINAL DEADLINE IS ENCOURAGED.

ELIGIBILITY

These public art commissions and potential purchases are open to all professional artists, artisans, or artist-led teams *that live and work in the state of Illinois*.

- An artist/artisan is defined as a skilled practitioner that generates designs and concepts for creative works that reflect form, beauty, and aesthetic perception. All artists on a team must be from Illinois.
- Subcontractors may be used and are defined as those providing technical implementation such as construction, fabrication, and/or assembly for portions or all of a finished product under direct supervision and control of an artist.
- Staff of Central Management Services and the Illinois Environmental Protection Agency are not eligible to apply for this commission.

PROJECT SUMMARY

The mission of the Illinois Environmental Protection Agency (IL EPA) is to safeguard environmental quality, consistent with the social and economic needs of the State of Illinois, to protect health, welfare, property, and the quality of life.

The IL EPA works to safeguard natural resources from pollution to provide a healthy environment. By partnering with businesses, local governments, and the public, the IL EPA is dedicated to continued protection of the air we breathe, the water we drink, and the land we live on.

The need for new office space for IL EPA staff led to the purchase of the former Sears department store on the north end of Springfield's White Oaks Mall. The building is now undergoing a \$60,700,000 interior and exterior renovation. The completely renovated 186,000 square foot space will accommodate over 650 employees.

<https://epa.illinois.gov/>

ARTWORK OBJECTIVES AND LOCATIONS

PROJECT DETAILS

As guardian and defender of the land, water, and air in Illinois, the IL EPA is interested in artwork that explores themes related to its environmental stewardship work for the citizens of Illinois. As such they encourage artists to explore the use of recycled and found materials.

All artwork, interior and exterior, must be durable, safe, and cost effective with limited annual maintenance, and must meet the requirements of the Americans with Disabilities Act and the Illinois Accessibility Code.

See [pages 9-12](#) for more detailed images of the artwork spaces.

The artwork for this project has been divided into three parts across the building.

SPECIFIC LOCATION INFORMATION

1) **Open Stairwell**– This bright expansive space will be a hub for staff and visitors. It is both a passage through the building and a gathering spot for discussion and collegiality. The artwork area is the focal point of the space. The 28.5' x 15' wall area will provide a canvas that will be lit by a bank of clerestory windows above.

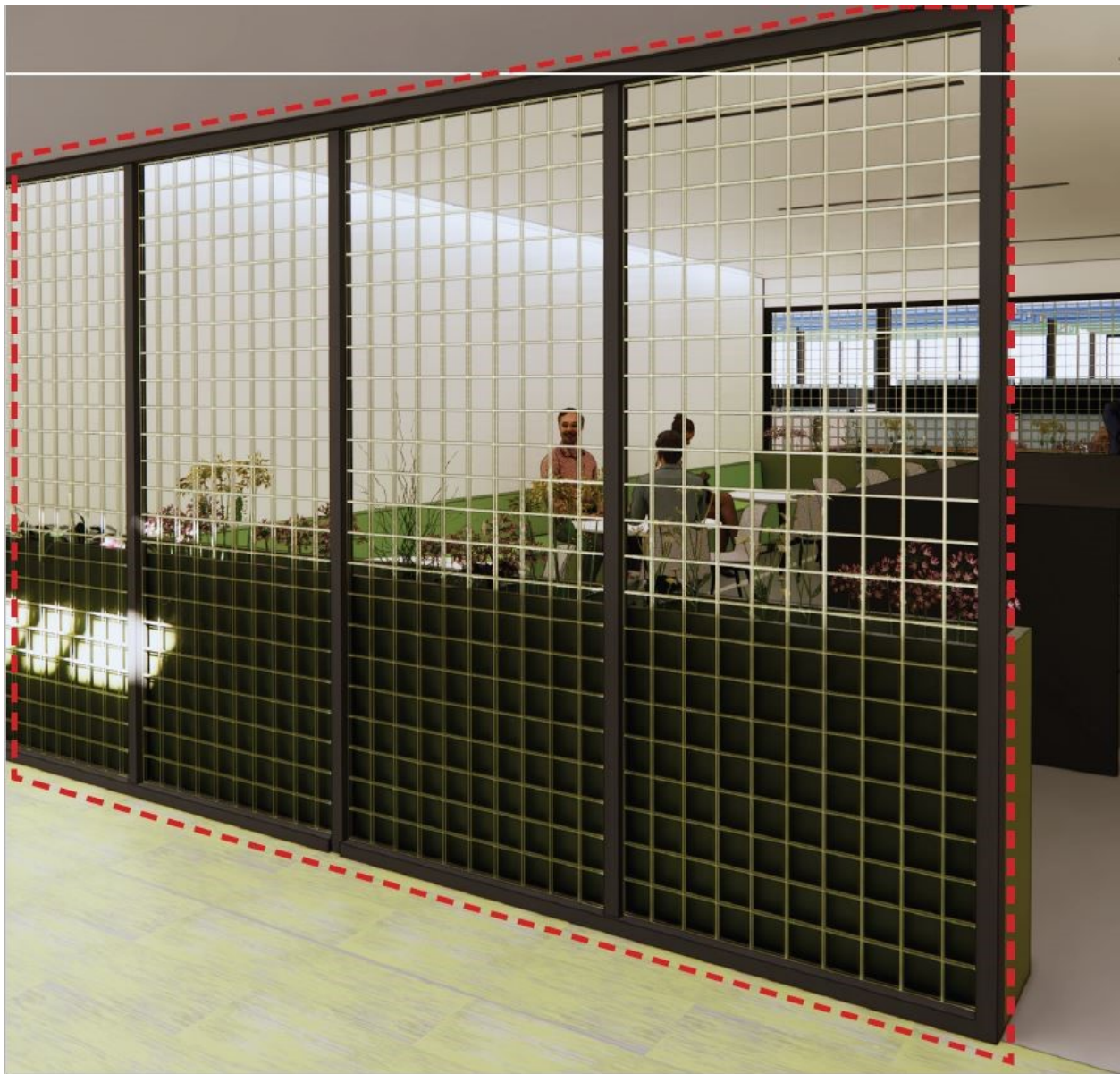
The artwork can be one piece, multiple pieces or an installation. Materials selected for the project must be fade resistant and be able to withstand the rigors of exposure in a public area.



Environmental Protection Agency
Springfield, Illinois
250-000-022

2) Kitchenette/Lounge Partitions– The kitchenette partitions act as semi-opaque planes used to differentiate the open office space from gathering areas. The average height of the partitions is 8' 2" with a maximum available depth of 5". In total there are seven partitions in five locations across the building.

The committee does not wish to limit artists' creativity or use of materials, but as whole, the partitions should feel cohesive. The partitions must be self-supporting and mounted to the floor (concrete with resilient or carpeted floor coverings).



3) Exterior Pavement/Sidewalks— The artwork design should lead staff and visitors to the main entry of the building. The concrete paving creates a connecting path along the perimeter of the building. The paths grow and shrink to provide moments of greenery and seating areas.

The pavement concrete is 5” deep. The available pavement to be used/manipulated for wayfinding artwork ranges from 6,750-29,360 square feet. Any addition to or subtraction from the paving should maintain ADA accessibility.



BUDGET DETAILS

The budgets for the project areas are:

- 1) Open Stairwell—\$175,000
- 2) Kitchenette/Lounge Partitions—\$92,500
- 3) Exterior Pavement/Sidewalk—\$12,000

One artist/team will be commissioned for each location.

The budgets cover all expenses associated with, but not limited to the project design, labor, fabrication, project management, materials, tools, contracted services, operations and meetings, and travel required to complete the artwork plus installation, related permits,

licenses, taxes and insurance, and transportation and delivery of the work to the site, as well as documentation of the completed project. Any expense that exceeds the contracted amount will be the artist's responsibility.

The artist is responsible for working with the Capital Development Board Art-in-Architecture Program, the using agency, and other relevant partners to oversee all aspects of the art installation.

SELECTION PROCESS

From the pool of eligible applicants, at least three artists/teams will be selected for each artwork location and paid a stipend to develop and present site specific proposals.

- 1) Open Stairwell Stipend—\$2,500 each
- 2) Kitchenette/Lounge Partitions Stipend—\$1,500 each
- 3) Exterior Pavement/Sidewalks Stipend—\$500 each

Information will be sent to the selected artists/teams with details of the proposal process and contracts.

Do not send a proposal unless you have been contacted by the Art-in-Architecture Coordinator.

LEGAL AGREEMENT

The Capital Development Board Art-in-Architecture Program reserves the right to alter any aspect of the selection process or overall project in any way for its own convenience at any time. This Request for Qualifications does not constitute either an expressed or implied contract and these provisions are subject to change.

HOW TO APPLY

IF YOU HAVE ALREADY APPLIED TO THE ILLINOIS ART-IN-ARCHITECTURE PROGRAM:

If you have previously applied and your portfolio is on file, you do not need to send all of your materials again.

To apply for this project, email a Letter of Intent that includes:

- the project name and project number
- *the building location(s) for which you are applying*
- your name and the name of your team members if applying as a team
- your most current contact information including address, telephone number, and e-mail address

HOW TO APPLY CONTINUED

IF YOU HAVE NEVER APPLIED TO THE ILLINOIS ART-IN-ARCHITECTURE PROGRAM OR WISH TO UPDATE YOUR PORTFOLIO:

Please e-mail a full package including ONE copy of each of the following *labeled with the artist's name as well as the project name and number*.

- *Résumé* (if a team, one for each member) with current contact information, including:
 - Name, Address, Phone, E-mail, Website (if applicable)
- *Artist Statement/Letter of Intent* (1 page maximum, double spaced)
 - *State the building location(s) for which you are applying.*
 - If the submission is on behalf of a team, please identify the lead artist and indicate if the individuals have previously collaborated and the nature of the collaboration.
 - If the artist or artist team has worked with not-for-profit organizations, local governments, state agencies, or other similar and relevant groups, please describe the project.
- *Up to 15 JPEG images of relevant past work.* Please provide the images in the following format:
 - Please send images as attachments and not in the body of the e-mail.
 - One image per JPEG
 - Pixel dimensions per image: approximately 600 x 800
 - Image resolution: 72-300 pixels per inch
 - Maximum file size per image: 1MB
 - Name each image: lastnamefirstnameimagenumber.jpg, for example: mirojoan01.jpg, mirojoan02.jpg, mirojoan03.jpg, etc.
 - A corresponding, numbered, annotated image list with title, media, dimensions, location, brief description, date of the work, project budget, and project partners, if applicable.
- *References* of at least three professionals (for example, a commissioning agency or organization, design or arts professional, architect, landscape architect, engineer, etc.). Only include the name, complete address, telephone number, and e-mail for each reference [not reference letters].
- *Optional* One PDF file of additional support material, including press clippings or other relevant information on past projects (maximum 1MB file.)
- *Digital Submittals*
 - Email submittals are required.

- Please Note:
 - Send art images as JPEG files ONLY.
 - PowerPoint presentations are not accepted.
 - **Do not send design proposals.**
 - All submittals become property of the Capital Development Board Art-in-Architecture Program. Submissions can be made available for public viewing. The artist retains copyright.

HOW AND WHERE TO SUBMIT

Interested artists must e-mail application materials no later than **Friday, July 14, 2023 by 4:30 P.M.** Submissions received after this date will be kept for review for other Art-in-Architecture projects.

- E-mail **CDB.ArtinArchitecture@illinois.gov**

QUESTIONS?

Contact the Art-in-Architecture Program at **CDB.ArtinArchitecture@illinois.gov**.

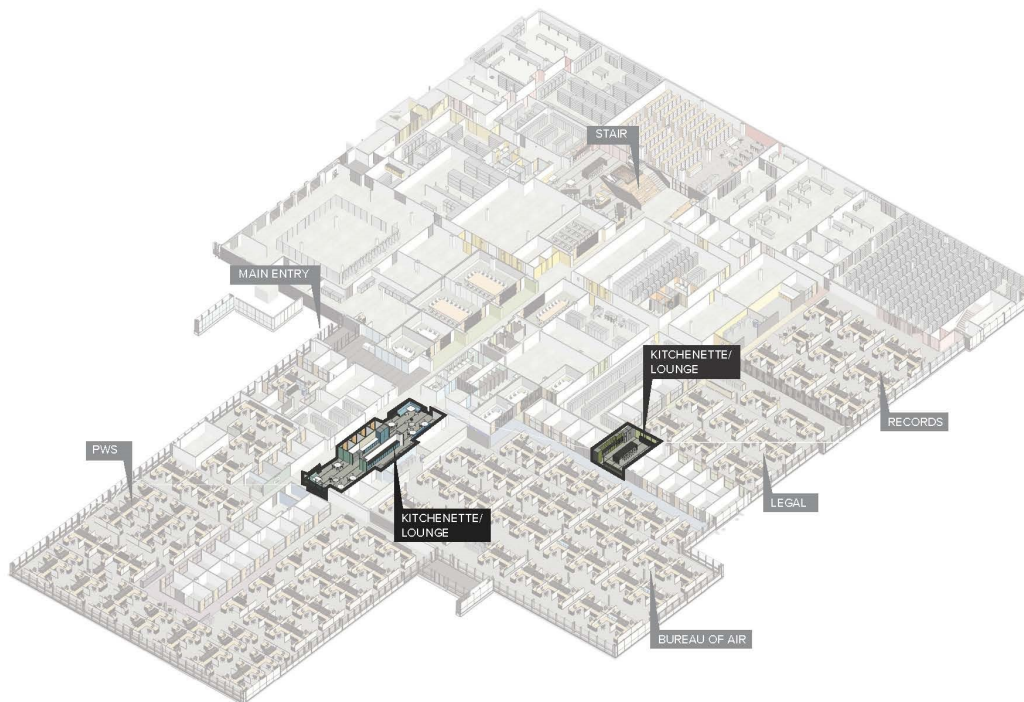
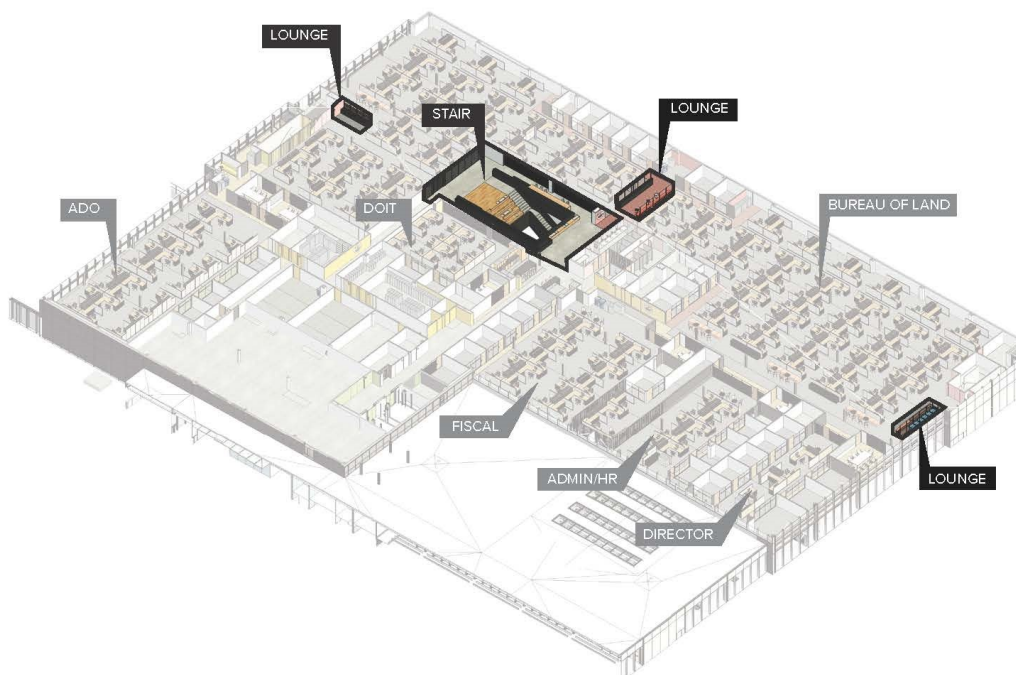
The Art-in-Architecture Procedure Manual, commission opportunities, and other information are posted at [AIA Program website](#).

ABOUT THE ART-IN-ARCHITECTURE PROGRAM

The Illinois Art-in-Architecture Program promotes and preserves Illinois art and enriches communities by commissioning original artwork for public buildings constructed with State funds.

The enabling legislation for the Program requires that the Capital Development Board “shall set aside 1/2 of 1 percent of the amount authorized and appropriated for construction or reconstruction of each public building financed in whole or in part by State funds and generally accessible to and used by the public for purchase and placement of suitable works of art in such public buildings.” A committee including art professionals and the project architect, and oversees each project and selects the artwork.

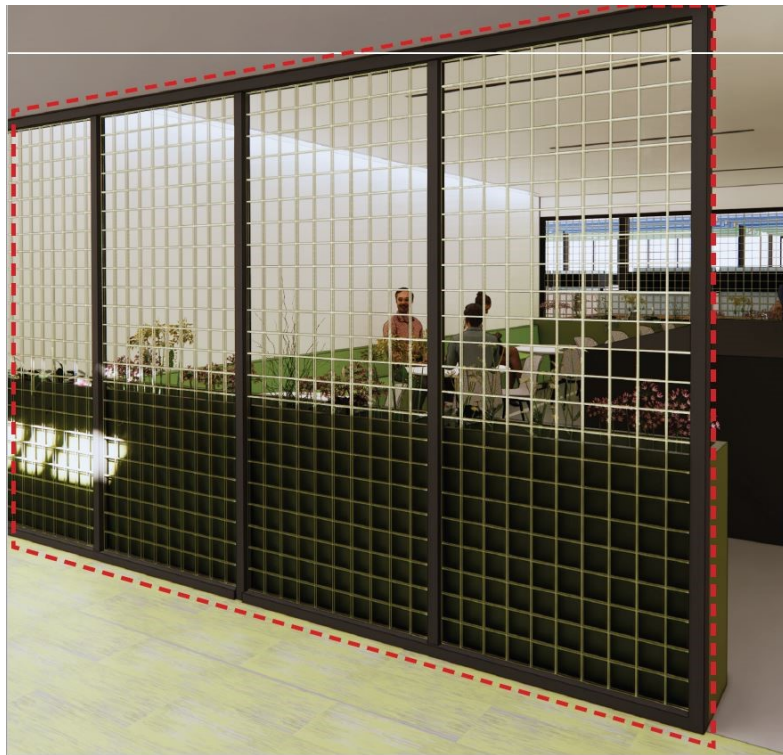
Since its inception in 1977, the Art-in-Architecture Program has purchased or commissioned works of art by Illinois artists for public display throughout Illinois. For more information visit the [AIA Program website](#).

FIRST FLOOR PLAN WITH HIGHLIGHTED ARTWORK LOCATIONS**SECOND FLOOR PLAN WITH HIGHLIGHTED ARTWORK LOCATIONS**

1) OPEN STAIRWELL RENDERINGS



2) KITCHENETTE/LOUNGE PARTITION RENDERINGS



3) PAVEMENT/SIDEWALKS RENDERINGS

