



Illinois Capital Development Board  
Art-in-Architecture Program

# Request for Qualifications

for Artists who Live & Work in Illinois

*University of Illinois Springfield  
Library Commons  
Springfield, Illinois  
Project Number: 830-080-018*

---

## CALL TO ARTISTS

The Art-in-Architecture Program of the Capital Development Board is pleased to announce a Request for Qualifications (RFQ) to Illinois professional artists to create permanent original public art for the Library Commons on the University of Illinois Springfield campus in Springfield, Illinois.

**Final Deadline:** Friday, August 12, 2022  
4:30 P.M.

**NOTE THAT EMAIL SUBMITTALS ARE NOW REQUIRED**

## ELIGIBILITY

These public art commissions and potential purchases are open to all professional artists, artisans, or artist-led teams *who live and work in the state of Illinois*.

- An artist/artisan is defined as a skilled practitioner that generates designs and concepts for creative works that reflect form, beauty, and aesthetic perception. All artists on a team must live and work in Illinois.
- Subcontractors may be used and are defined as those providing technical implementation such as construction, fabrication, and/or assembly for portions or all of a finished product under direct supervision and control of an artist.
- Faculty and staff of the University of Illinois Springfield are not eligible to apply for this commission.

## PROJECT SUMMARY

The new Library Commons will be a welcoming, inclusive, dynamic environment that will promote student success at the University of Illinois Springfield (UIS).

The 63,000 square foot Library Commons will bring together student-focused campus services that will facilitate student retention and success. In addition to the Library, the Library Commons will house Information Technology Services, the Center for Academic Success and Advising, and the Career Development Center creating flexible spaces and services that will assist students in navigating their lifelong personal and professional journeys.

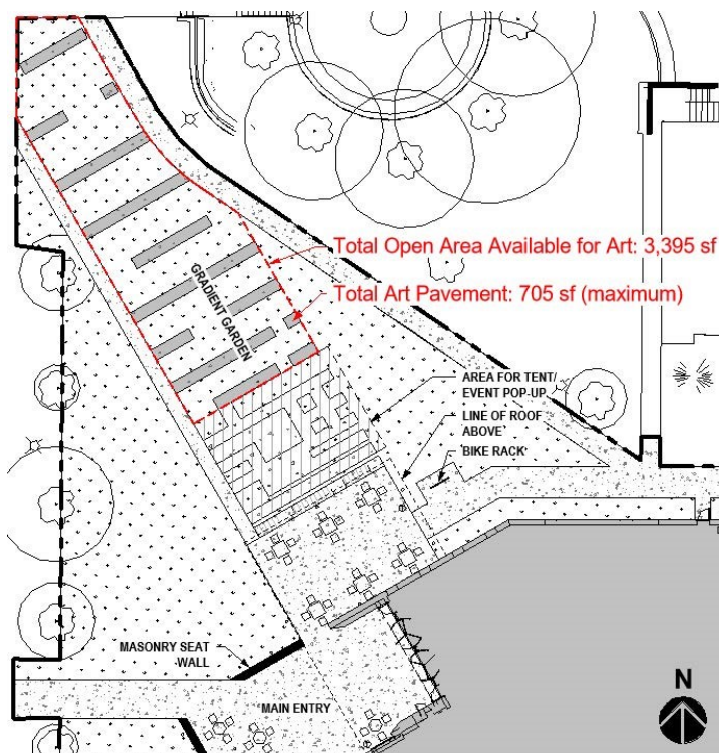
In keeping with the University's holistic goals to be forward-thinking about its impact on the environment, sustainability has been a key goal for the Library Commons. Energy efficient systems, native plantings, maximizing permeable surfaces, reduction of heat islands, reduction of bio accumulative and toxic sources, and integration of safe cleaning practices and products are important elements of the project.

The Library Commons will be located just off the main quad in order to complete the campus' academic core. The brick on the exterior will mirror that of the neighboring academic buildings while glass and metal panels will allow a transparent view both within and out.

## PROJECT SITE

The artwork will be located in the heart of the campus. The area outside the northwest entrance to the Library Commons currently is known as the "Gradient Garden." *While approximately 700 square feet of paving shown below will be part of the Gradient Garden artwork area, the design shown is only a placeholder.* The exact paving design will be part of the artist's project.

The total area available for artwork is 3,395 square feet. The area immediately adjacent to the entrance is not part of the artwork site and will be left open to accommodate outdoor events, tents, and seating. See drawing below.



This artwork represents the area adjacent to the campus quad, site of many outdoor campus events and across from the Colonnade. An outdoor art installation here will represent the future aspirations of the University.

Additional images are at the end of the RFQ.

## ARTISTIC OBJECTIVES

The Committee is looking for a conceptually-challenging, site-specific installation that flows out from

the Library Commons toward the Quad and the rest of the campus. It should accent the directional feeling of the “Gradient Garden” and not compete with the vista to the Colonnade.

The artwork will welcome the students of UIS and will set the tone of an inclusive and dynamic atmosphere in which they can work and collaborate. It will set the mood and tone for the Library Commons and serve as a welcome for students, faculty, visitors, and staff.

To learn more about the guiding principals of the University, visit its [mission, vision, and values page](#).

The piece must be durable, safe, and cost effective to maintain with limited annual maintenance.

## BUDGET DETAILS

The budget for the project is \$161,000.

This budget covers all expenses associated with, but not limited to, the project design, labor, fabrication, project management, materials, tools, contracted services, operations and meetings, and travel required to complete the artwork plus installation, related permits, licenses, taxes and insurance, and transportation and delivery of the work to the site, as well as documentation of the completed project. Any expense that exceeds the contracted amount will be the artist’s responsibility.

The artist is responsible for working with the Capital Development Board Art-in-Architecture Program, the using agency, and other relevant partners to oversee all aspects of the art installation.

## SELECTION PROCESS

At least three artists/teams will be selected from the pool of eligible artists/teams and paid a fee of \$2,500 each to develop and present site-specific proposals.

Letters will be sent to the selected artists/teams with details of the proposal process and contracts.

*Do not send a proposal unless you have been contacted by the Art-in-Architecture Coordinator.*

## LEGAL AGREEMENT

The Capital Development Board Art-in-Architecture Program reserves the right to alter any aspect of the selection process or overall project in any way for its own convenience at any time. This Request for Qualifications does not constitute either an expressed or implied contract and these provisions are subject to change.



---

## HOW TO APPLY

### IF YOU HAVE ALREADY APPLIED TO THE ILLINOIS ART-IN-ARCHITECTURE PROGRAM

You do not need to send your materials again if you have previously applied and your portfolio is on file. To apply for this project submit a Letter of Intent that includes

- the project name and project number
- your name and the name of your team members if applying as a team
- your most current contact information including address, telephone number, and e-mail address

### IF YOU HAVE NEVER APPLIED TO THE ILLINOIS ART-IN-ARCHITECTURE PROGRAM OR WISH TO UPDATE YOUR PORTFOLIO

Please e-mail a full package including ONE copy of each of the following *labeled with the artist's name as well as the project name and number*.

- Email submittals are required.
- *Résumé* (if a team, one for each member) with current contact information, including:
  - Name
  - Address
  - Phone
  - Fax
  - E-mail
  - Website
- *Artist Statement/Letter of Intent* (1 page maximum, double spaced)
  - If the submission is on behalf of a team, please identify the lead artist and indicate if the individuals have previously collaborated and the nature of the collaboration.
  - If the artist or artist team has worked with not-for-profit organizations, local governments, state agencies, or other similar and relevant groups, please describe the project.
- *Up to 15 JPEG images of relevant past work*. Please provide the images in the following format:
  - One image per JPEG
  - Pixel dimensions per image: approximately 600 x 800
  - Image resolution: 72-300 pixels per inch
  - Maximum file size per image: 1MB
  - Name each image: lastnamefirstnameimagenumber.jpg, for example: mirojoan01, mirojoan02, mirojoan03, etc.

- A corresponding, numbered, annotated image list with title, media, dimensions, location, brief description, date of the work, project budget, and project partners, if applicable.
  - When submitting by e-mail, please send images as attachments and not in the body of the e-mail.
  - *References* of at least three professionals (commissioning agency or organization, design or arts professional, architect, landscape architect, engineer, etc.) who have a detailed knowledge of the artist's work and working methods. Include contact name, complete address, telephone number, and e-mail for each reference.
  - *Optional* One PDF file of additional support material, including press clippings or other relevant information on past projects (maximum 1MB file.)
  - *Digital Submittals*
    - Email submittals are preferred.
    - If the information is provided on a CD, include the documents (résumé, artist statement, image list, references, etc.) as well as the images, and label it clearly with artist or team name and date.
  - *PowerPoint presentations are not accepted.*
- Please Note:
- Send art images as JPEG files ONLY. Slides will not be accepted nor returned.
  - **Do not send design proposals.**
  - All submittals become property of the Capital Development Board Art-in-Architecture Program and will not be returned. Submissions can be made available for public viewing. The artist retains copyright.

## HOW AND WHERE TO SUBMIT

Interested artists must send application materials no later than **Friday, August 12, 2022 at 4:30 P.M.** Submissions received after this date will be kept for review for other Art-in-Architecture projects.

Application materials must be delivered by:

E-mail to **CDB.ArtinArchitecture@illinois.gov**

Art-in-Architecture Program  
Capital Development Board  
Wm. G. Stratton Building, 3rd Floor  
401 South Spring Street  
Springfield, IL 62706

---

## QUESTIONS?

Contact the Art-in-Architecture Program at **CDB.ArtinArchitecture@illinois.gov**

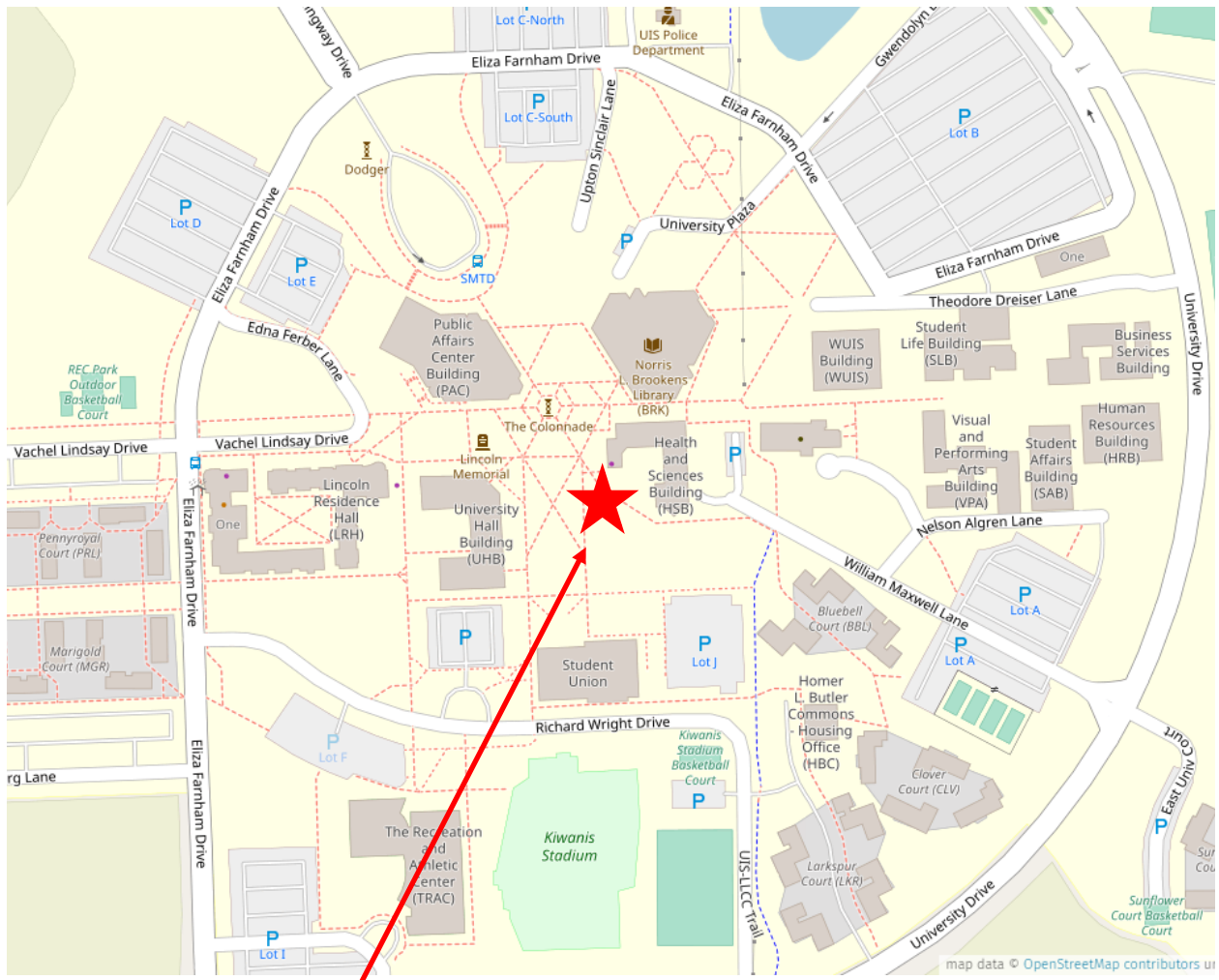
The Art-in-Architecture Procedure Manual, commission opportunities, and other information are posted at [www.illinois.gov/cdb/services/art](http://www.illinois.gov/cdb/services/art)

## ABOUT THE ART-IN-ARCHITECTURE PROGRAM

The Illinois Art-in-Architecture Program promotes and preserves Illinois art and enriches communities by commissioning original artwork for public buildings constructed with State funds.

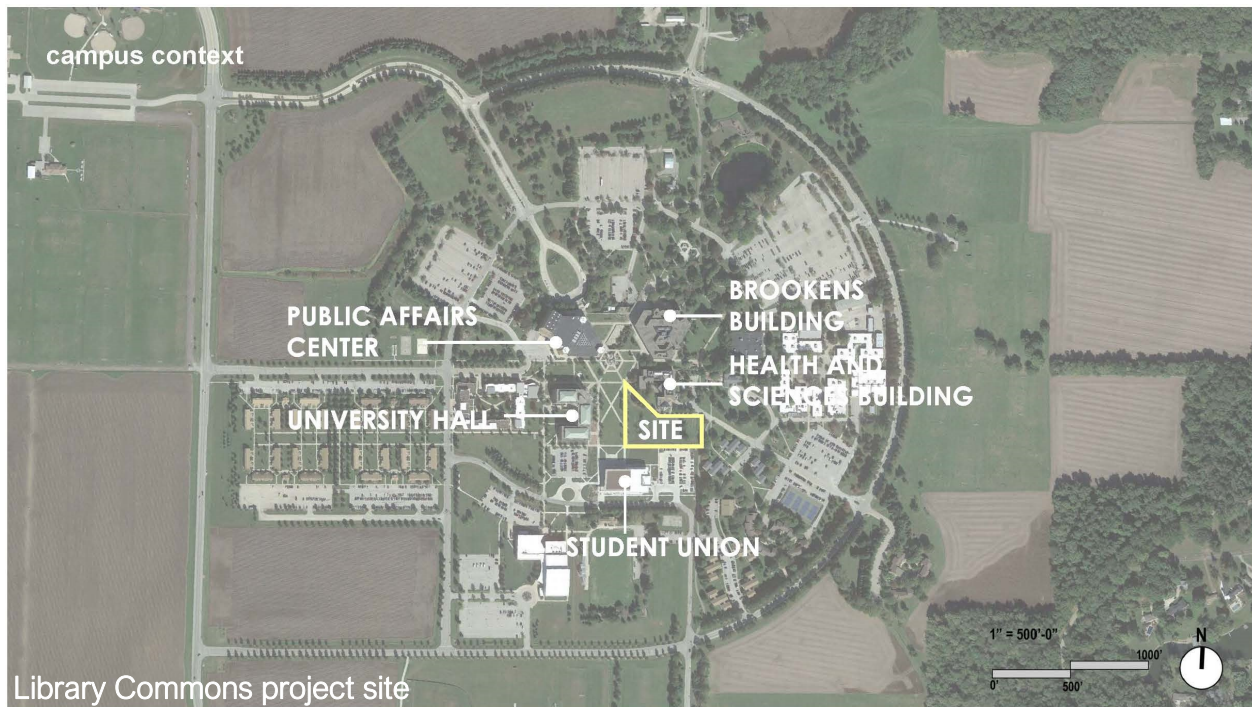
The enabling legislation for the Program requires that the Capital Development Board “shall set aside 1/2 of 1 percent of the amount authorized and appropriated for construction or reconstruction of each public building financed in whole or in part by State funds and generally accessible to and used by the public for purchase and placement of suitable works of art in such public buildings.” A committee including art professionals and the project architect, oversees each project and selects the artwork.

Since its inception in 1977, the Art-in-Architecture Program has purchased or commissioned works of art by Illinois artists for public display throughout Illinois. For more information visit the [AIA Program website](#).

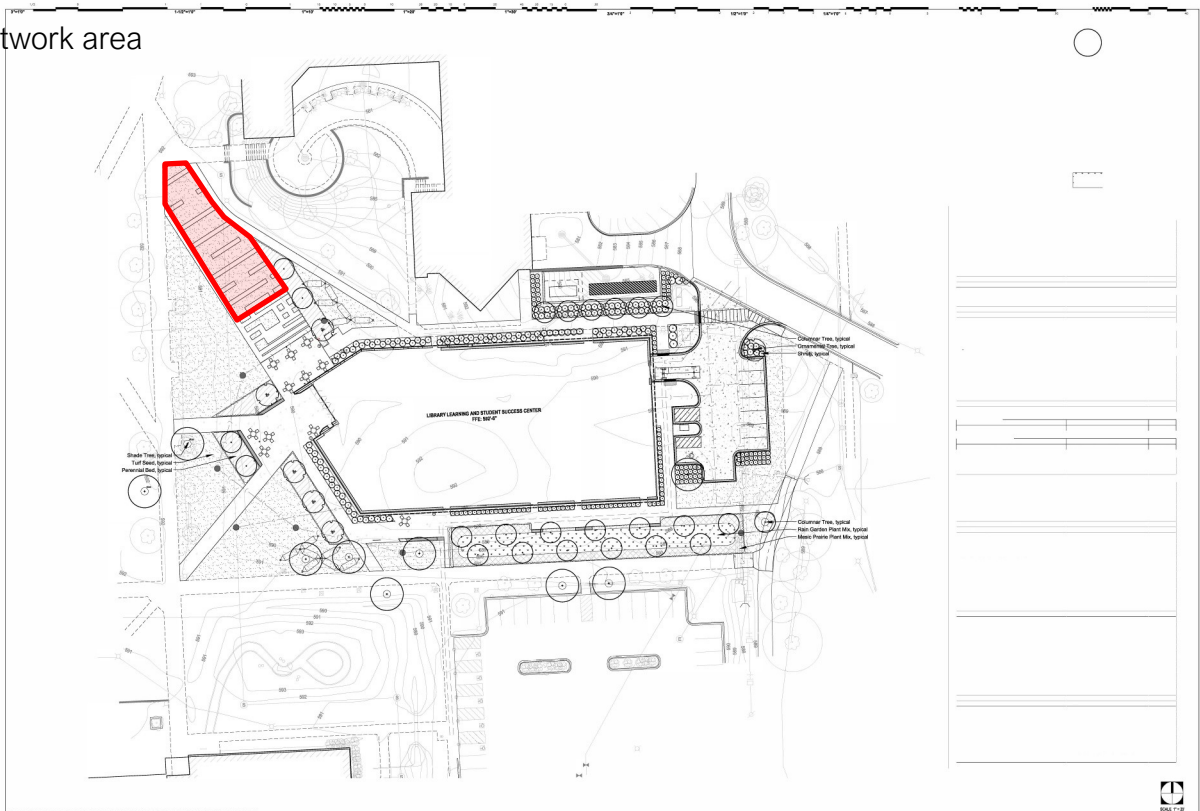


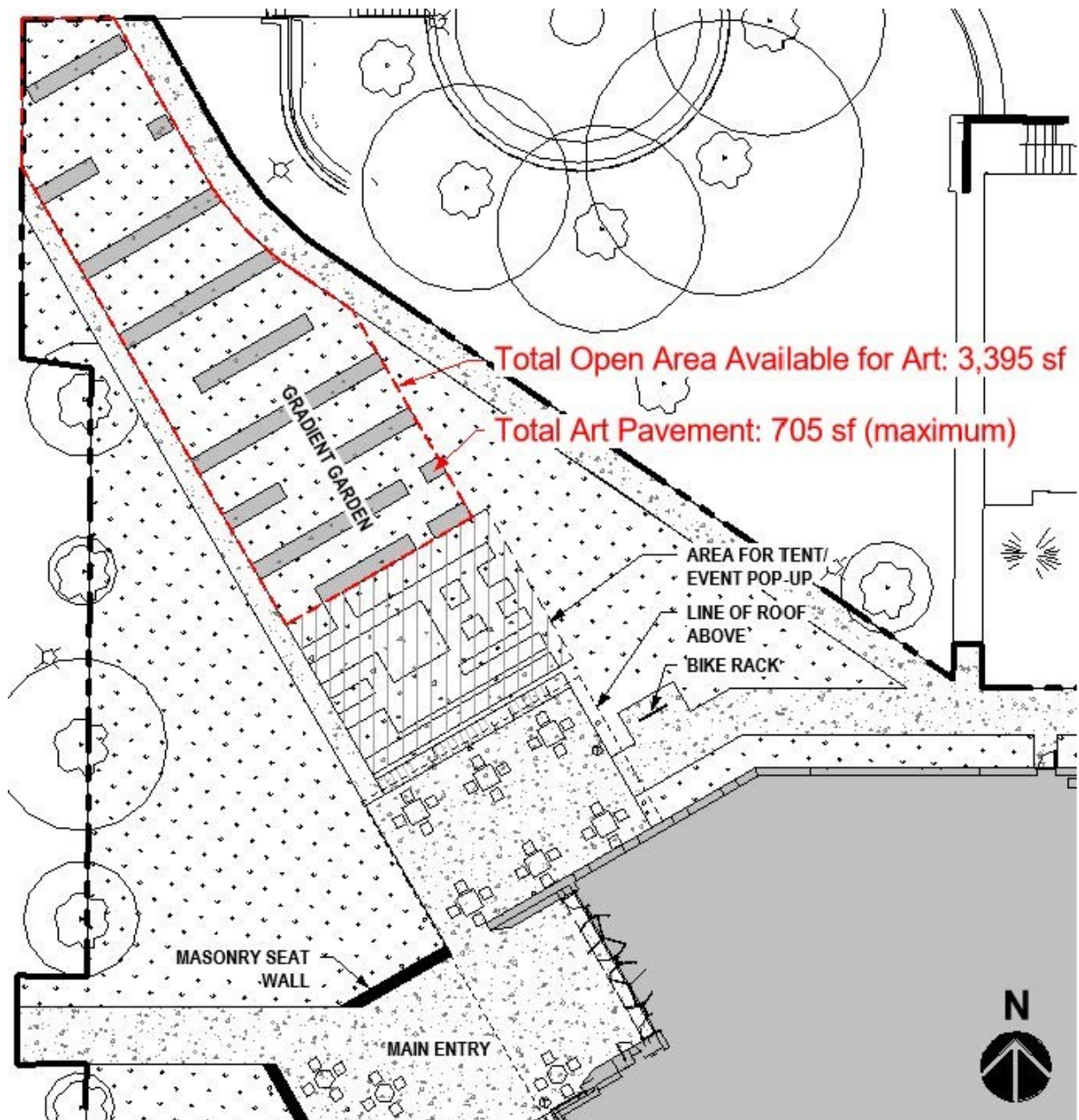
UIS Campus Map, artwork area





Artwork area





Note that the pavement plan in the artwork area shown above is a placeholder. The exact paving design will be part of the artist's project.

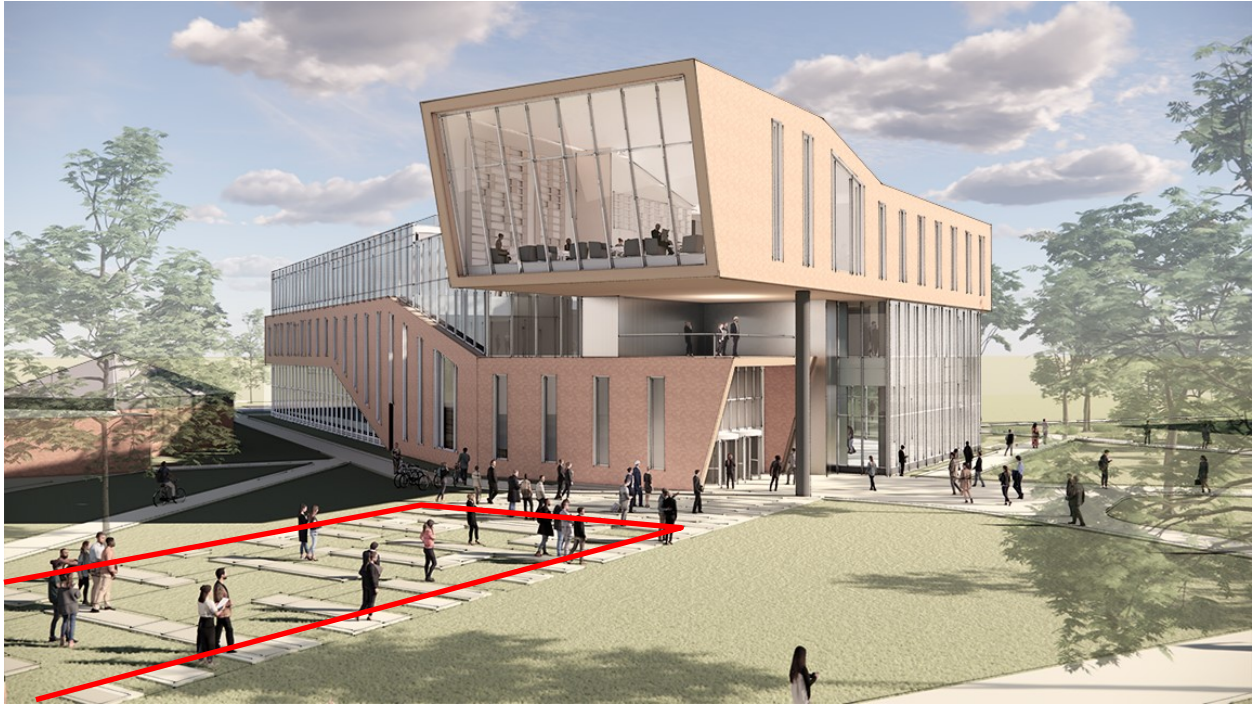




Artwork area



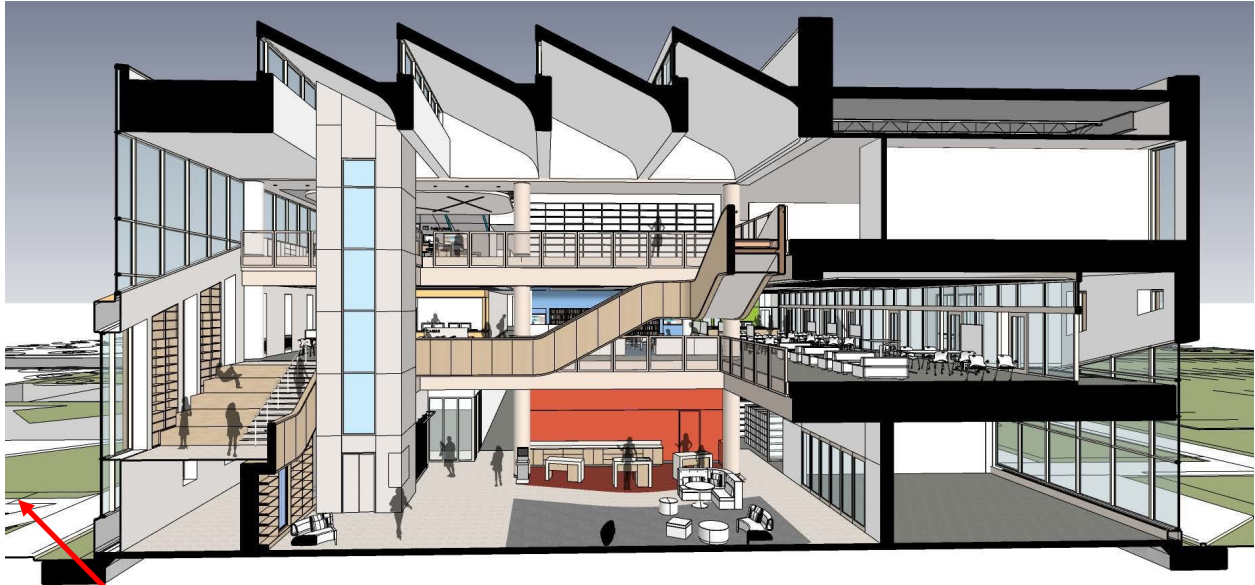




Artwork area at northwest side of Library Commons. *Pavers in the artwork area are placeholders.* Southeastern view of Library Commons.







Interior renderings showing views out to artwork area.



furniture items shown in view may not be actual product type as shown

PFEIFFER

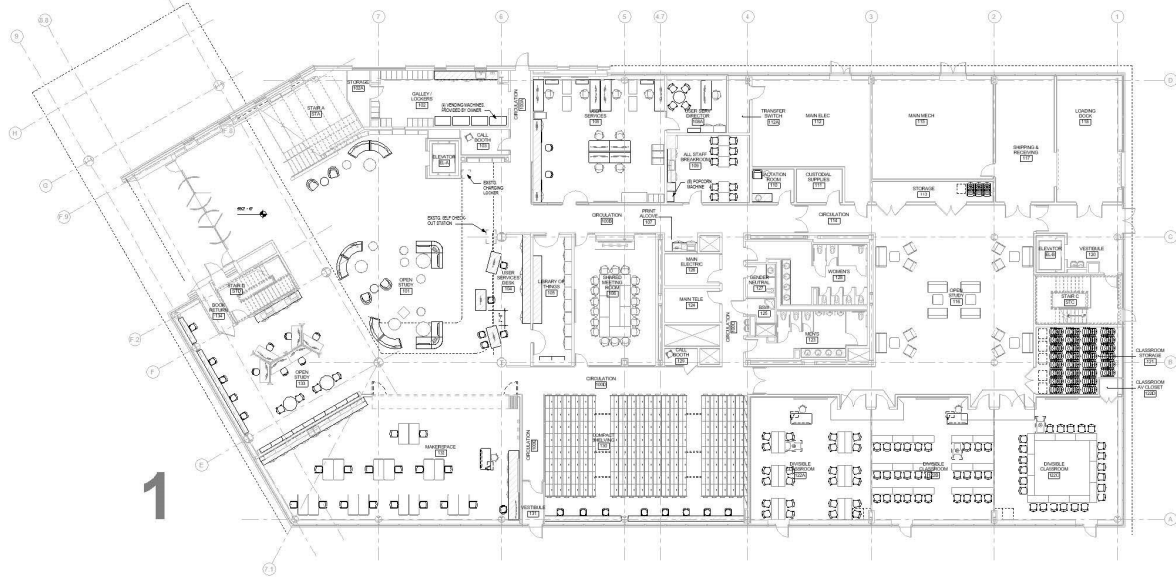
UIS LLSSC\_INTERIOR UPDATES

FEBRUARY 24, 2022 13 of 36

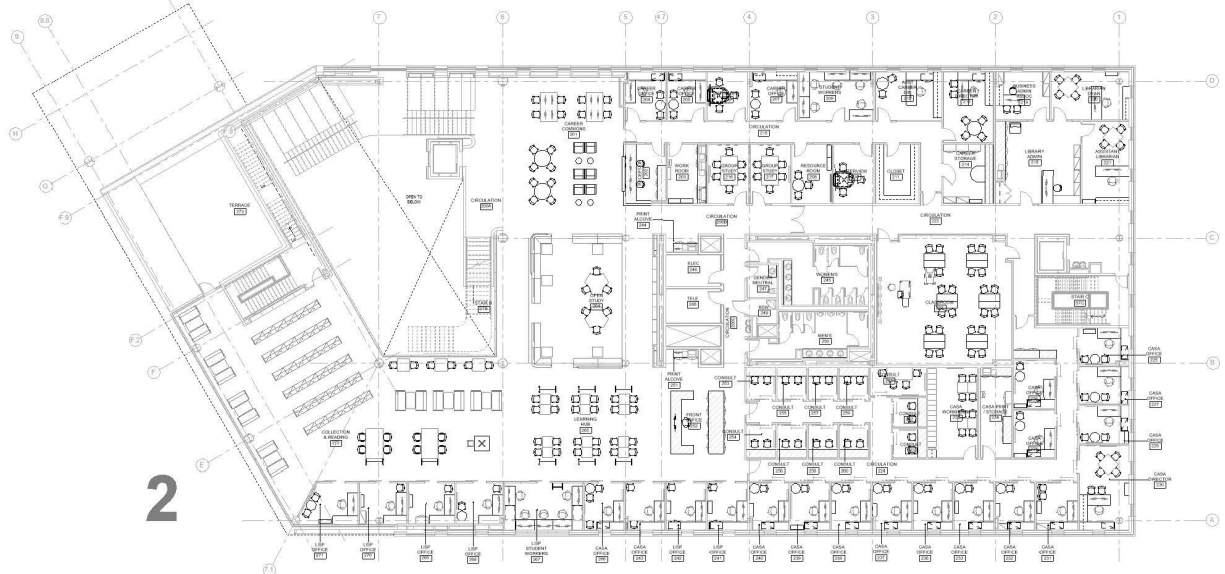


**furniture plan – first floor**

Feb 24, 2022

**furniture plan – second floor**

Feb 24, 2022



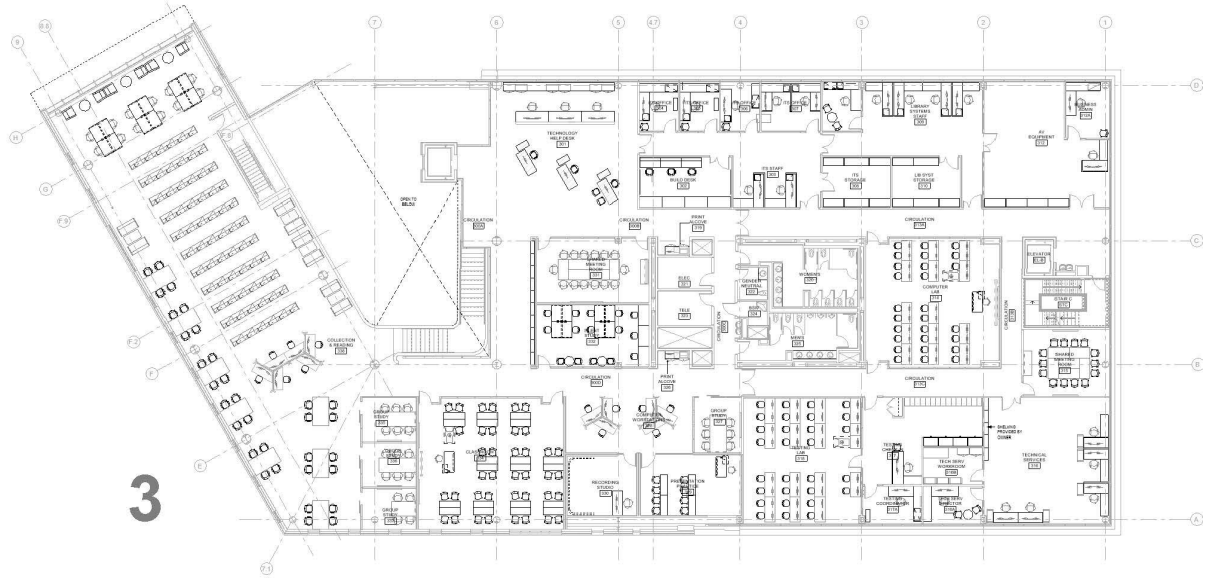
PFEIFFER

UIS LLSSC\_INTERIOR UPDATES

FEBRUARY 24, 2022 34 of 36

**furniture plan – third floor**

Feb 24, 2022



PFEIFFER

UIS LLSSC\_INTERIOR UPDATES

FEBRUARY 24, 2022 35 of 36